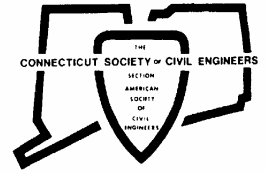


Since 1884

CSCE Newsletter

WWW.CSCE.ORG

Connecticut Society of Civil Engineers
American Society of Civil Engineers **January 2009 Edition**



Since 1884

CSCE MONTHLY DINNER MEETING – January 2009

Date: Tuesday, January 13, 2009

Speaker: **Roopesh Joshi, P.E., Principal Engineer, Hazen and Sawyer, NYC**
The Design, Construction and Start-Up of the Upgraded Stamford Water Treatment Plant

The Stamford Water Treatment Plant (WTP), which has been in service since 1986, has a capacity of 24 million gallons per day (Mgal/d). Operation constraints and physical problems prompted the owner, Aquarion Water Company of Connecticut, to evaluate the condition and performance of the existing facility, compare various alternatives for upgrading the facility, and perform the design of the selected alternative. Several upgrade alternatives were developed including rehabilitation of the existing process, integration of plate settlers or dissolved air flotation stacked above filtration (DAFF) and membranes. The recommended process that will meet the current and future requirements of Stamford is DAFF. The upgraded plant has a design capacity of 30 Mgal/d. Final design was completed and construction began in April 2005. Start-up of the upgraded facility took place in June 2007. Roopesh Joshi, P.E. of Hazen and Sawyer will explain why the DAFF process was selected for this project, how the process was integrated into the existing facilities and the challenges of the design, including the requirement to maintain the existing plant in operation during construction and start-up of the new plant.

Location: Three Bears Restaurant, 333 Wilton Road, Route 33, Westport

Time: 5:30-6:30 PM Social Hour
6:30-7:30 PM Dinner
7:30-8:30 PM Program

Cost: Members: \$35.00 Full Time Students: \$15.00
Non Members: \$45.00 (Please make checks payable to CSCE)

Dinner: Choice of English Cut Prime Rib, Broiled Salmon or Chicken Marsala

Reservations: Contact Amy Petrone, (860) 526-5935 or by email at admin@csce.org, by **noon on Monday, January 12th. Please provide your dinner choice when you RSVP.**

Directions: Three Bears Restaurant is located just off the Merritt Parkway via Exit 41. Coming from the south, turn right onto Route 33. Coming from the north, turn left onto Route 33 - proceed just moments to the intersection of Route 33 and Wilton Road. The restaurant is on the left. From I-95, take Exit 17, and proceed 3.5 miles north to the Three Bears Restaurant.



President's Message

Happy New Year! I hope you enjoyed the holiday season. This is an exciting time to be a civil engineer with the proposed stimulus package nearing a trillion dollars for infrastructure projects. Now is the time for our profession to be recognized for the important contributions to the society. To show our support for the stimulus package, the legislative committee, Ron Nault and Roy Merritt and I will be meeting with Connecticut DOT Commissioner Joseph Marie and Senator Joseph Lieberman. The meeting was set up by Don Shubert of the Connecticut Construction Industries Association.

Our November Dinner Meeting at Central Connecticut State University was attended by over 50 members. The guest of honor was Mr. Drew Floyd, PE, who is the Regional Manager from Moretrench. The next meeting will be held in conjunction with the Fairfield Branch in Westport. The presentation will be on the design, construction and start-up up of the upgraded Stamford Water Treatment Plant.

Every month I will have an update on the ACE Awards to be held on Tuesday, May 12, 2009. We are excited to announce that ASCE President-Elect Blaine Leonard, PE, F. ASCE will be attending. In addition, Region 1 Society Director Anthony Puntin, PE, M. ASCE, will also be in attendance. This year we are looking for people to help evaluate each project in the technical areas of Water Resources/Environmental; Transportation; Geotechnical; Structural; and Construction. Please contact me if you are interested in serving as an evaluator at president@csce.org. Applications will be available shortly and will be due by the end of February. We hope you consider submitting a project.

ASCE dues were due on Dec. 31, 2008, which means if you haven't renewed your 2009 membership, you run the risk of losing your valuable ASCE benefits, such as membership in your local ASCE Section or Branch. Plus, 2009 has the potential to be a significant year for ASCE and civil engineers. As we prepare to welcome a new president who has promised to place infrastructure renewal at the forefront of domestic issues, the Obama administration has already tapped ASCE to play a leading role in deciding where money from the stimulus package would best be spent.

I look forward to seeing you at the January dinner meeting which will be held at the Three Bears Restaurant. I encourage you to participate and attend this dinner. Remember to keep checking the CSCE website at www.csce.org as we continue to update the calendar and committee activities.

A handwritten signature in black ink, reading "Christopher M. Holden". The signature is fluid and cursive, with a long horizontal flourish extending to the right.

Christopher M. Holden, P.E., M.ASCE
President

THE BRAIN TEASER CORNER

November 2008 Brain Teaser's Answer: We know that the sides of a die that are opposite each other always equal 7. That means that $7 \times 7 = 49$, which accounts for the 7 dice. Now add the value for the top die, which we know is 6. Therefore, the total is 55.

January 2009 Brain Teaser: Dominoes – If you place all 28 tiles in a continuous chain (adjacent ends of tiles must match) so that 5 dots are at one end, how many dots will be at the other end?

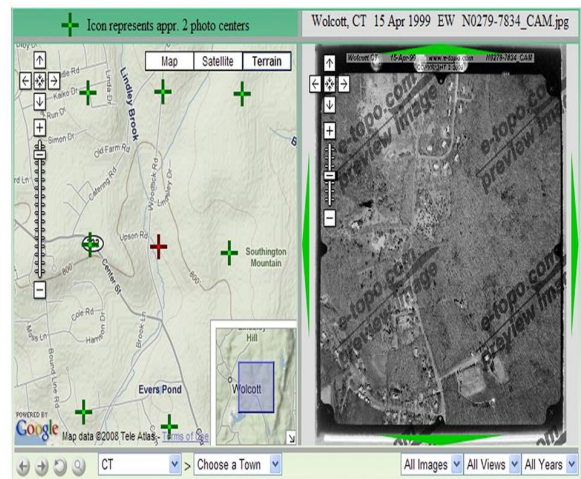
Solve mentally, then check with actual dominoes.

The solution will be shown in the next newsletter. Want to stump your colleagues? If so, submit your Brain Teaser (and solution) to the editor at NL-Editor@csce.org.

EASTERN TOPOGRAPHICS
Is now offering
FREE downloads of low altitude aerial imagery.

Over 150,000 high quality images of CT, MA, ME, NH, NY, NJ and RI are available. Visible features include utility poles, stone walls, and parking meters.

Visit www.e-topo.com to pan, zoom, and download images of your choice.



Notices

The **Benjamin Wright Award** is CSCE's highest award, presented each year to a civil engineer practicing in Connecticut who has demonstrated outstanding practice his or her career, and made significant contributions to civil engineering. Please consider nominating a deserving colleague. Nominations are due by April 10, 2009. The Executive Board will vote to determine the award winner and make the presentation at our annual meeting in May. Candidates will be considered for several years following their nomination. Nominations should be directed to Randy States (rtstates@geodesign.net), Billy Cunningham (Director-II@csce.org), or Jay Silva (Director-I@csce.org).

DEPARTMENT OF ECONOMIC AND COMMUNITY DEVELOPMENT

The Department of Economic and Community Development is the state's lead agency for the development and implementation of policies, strategies and programs all of which are designed to enhance Connecticut's communities and business and housing environments. We employ a wide range of staff including development agents, engineers, architects, information technology, managers, and clericals. Our entry level job classes include Connecticut Careers Trainee, Assistant Economic and Community Development Agent, Engineer Intern and Civil Engineer 1. Two of these job classes require taking an experience and training exam. If interested in taking this exam, please visit the Department of Administrative Services website at www.das.state.ct.us. If interested in employment with DECD or you wish more information, please e-mail Human Resources Director Mitch Drabik at: mitch.drabik@ct.gov or call 860-270-8022 or 8024.

The Department of Economic and Community Development is an equal opportunity/affirmative action employer and strongly encourages the applications of women, minorities, and persons with disabilities.

WHITLOCK DALRYMPLE POSTON & ASSOCIATES, P.C.
CONSULTING ENGINEERS



Service areas include:

Structural Engineering	Corrosion Assessment
Nondestructive Testing	Repair and Rehabilitation Design
Forensic Investigations	Litigation Support

Keith Kesner, Ph.D., P.E.
Associate
kkesner@wdpa.com



50 WASHINGTON STREET SUITE 751 So. NORWALK, CT 06854
203-354-4503 TEL 203-354-4528 FAX www.wdpa.com
Manassas, Virginia Austin, Texas So. Norwalk, Connecticut




Geotechnical and Environmental Services

Peter M. Heynen, PE
Principal

380 Maple Avenue • Cheshire, CT 06410
Tel: (203) 439-0063 • Fax: (203) 439-7036
email: pheynen@heynenengineers.com

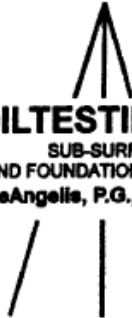
SIEFERT ASSOCIATES, LLC
CONSTRUCTION ENGINEERS

VINCENT A. SIEFERT, P.E.



180 Church Street, Suite 6
Naugatuck, CT 06770
203-723-1477
203-723-9346 fax
e-mail: vsiefert@snet.net

TEST BORINGS
CORE DRILLING



SOILS LABORATORY
MONITORING WELLS

SOILTESTING, INC.
SUB-SURFACE
SITE AND FOUNDATION INVESTIGATION
James DeAngelle, P.G., M.Sc. Engr'g. Geo

TEL: 203-888-4531
TEL: 1-800-388-4473
FAX: 203-888-6247

140 OXFORD ROAD
OXFORD, CONN. 06478

2009 CSCE MONTHLY MEETING CALENDAR

Please mark your calendars!

- Wednesday, March 18, 2009 at the University of New Haven
- Wednesday, April 15, 2009 at the United States Coast Guard Academy

ACE Awards Ceremony – Tuesday, May 12, 2009 at the Aqua Turf Club in Plantsville



Return Services Requested:

Michael Cook, ASCE *Geographic Services Manager*
1801 Alexander Bell Drive, Reston, VA 20191

Send other section correspondence to:

Secretary

Jason F. Waterbury, P.E.

19 Charles Mary Drive, Higganum, CT 06441
Phone: (860) 278-7850, Ext. 3380; Fax: (860) 525-5013
E-Mail: Secretary@csce.org

President

Christopher M. Holden, P.E.

Phone: (860) 343-8085 Ext. 155; Fax: (860) 343-8091
E-Mail: President@csce.org

President-Elect

Ronald J. Nault, P.E.

Phone: (203) 288-5188 Ext. 207, Fax: (203) 288-2583
E-Mail: President-Elect@csce.org

Vice President

Rabih M. Barakat, P.E.

Phone: (860) 594-3389, Fax: (860) 594-3373
E-Mail: Vicepresident@csce.org

Treasurer

Gregory K. Holness, P.E., Esq.

Phone: (860) 298-2000
E-Mail: Treasurer@csce.org

Newsletter Editor

Peter M. Heynen, P.E.

Phone: (203) 439-0063, Fax: (203) 439-7036
E-Mail: NL-Editor@csce.org

Director II

William J. Cunningham, P.E.

Phone: (203) 723-5830, Fax: (203) 723-9346
E-Mail: Director-II@csce.org

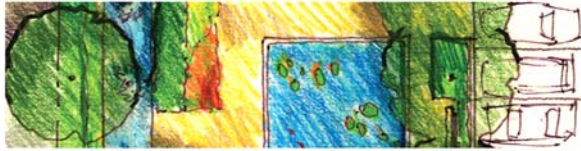
Director I

James L. Silva, P.E.

Phone: (860) 423-4506, Fax: (860) 423-1875
E-Mail: Director-I@csce.org

Bothwell Site Design LLC

Landscape Architecture and Site Planning



28 Knight Street
Norwalk, CT 06851
T 203.354.5700 • F 203.354.5699

www.bothwellsitedesign.com

**MALCOLM
PIRNIE**

INDEPENDENT ENVIRONMENTAL
ENGINEERS, SCIENTISTS
AND CONSULTANTS

www.pirnie.com

Thomas A. Loto, PE, BCEE
Project Manager

Malcolm Pirnie, Inc.
100 Roscommon Drive, Suite 100
Middletown, CT 06457

T: 860.613.7407
C: 860.830.1418
F: 860.632.0036
tloto@pirnie.com



**S
C
S**

STRUCTURAL CONSULTING SERVICES, P.C.

Structural Design for New
Buildings and Renovations
and Shoring, Sheeting and
Underpinning Designs for
the Construction Industry

James H. Fahey, P.E., S.E.
Andrew P. McConnell, P.E., S.E.
Alan M. Rosa, P.E.
Principals

67 Federal Road, Brookfield, CT 06804
Tel: 203.746.7578 Fax: 203.775.5678
info@sca-pc.com www.sca-pc.com



**G E O D E S I G N
I N C O R P O R A T E D**

RANDALL T. STATES, P.E.

GEOTECHNICAL ENGINEERS • ENVIRONMENTAL CONSULTANTS
984 SOUTHFORD ROAD • MIDDLEBURY CONNECTICUT 06762
TELEPHONE: (203)758-8836 FACSIMILE: (203)758-8842
WEB SITE: www.geodesign.net EMAIL: rtstates@geodesign.net

MORETRENCH

MORETRENCH.COM

GEOTECHNICAL SERVICES

Soil Nailing • Minipiles • Tieback Anchors • Grouting Systems
Earth Retention & Underpinning • Rock Protection

CONSTRUCTION SERVICES

Ground Freezing • Groundwater Treatment • Slurry Trenches
Construction Dewatering • Landfill Gas and Leachate Systems

16 COPICUT RD. (NEAR) ASSONET, MA 02702 / T: 508-644-9952 / F: 508-644-9965

Architecture • Engineering • Environmental
Land Surveying • Planning • Telecommunications
Traffic & Transportation • Construction Phase Services

URS

500 Enterprise Drive, Ste. 3B • Rocky Hill, Connecticut 06067

Tel: 860.529.8882 • Fax: 860.529.3991

www.urscorp.com

ANEOE/MF/VD

AI

Engineers, Inc.

919 Middle Street
Middletown, CT 06457
(860) 635-7740
(860) 635-7312 fax
www.aiengineers.com

Abul A. Islam, PE, FASCE
President/CEO

aislam@aiengineers.com

HELLER AND JOHNSEN

Consulting Geotechnical Engineers

Investigations • Design • Field Services

Foot of Broad Street T: (203)380-8188
Stratford, CT 06615 F: (203)380-8198

EMPLOYMENT OPPORTUNITIES

AI Engineers, Inc. (AI) is a dynamic 100-person engineering company with tremendous opportunities for technical professional development as well as learning and practicing state-of-the-art management skills. We are seeking articulate, high energy, committed individuals in civil/site, structural, bridge, transportation, M/E/P and sustainable design and construction from entry level to senior management positions. If you are looking for a well managed, transparent, incentive-based company culture where the sky is the limit for growth, please send your resume to hr@aiengineers.com or call (860) 635-7740.

Appledore Marine Engineering, Inc. – **Engineer Diver** (BSCE, 4 years experience and diving credentials, P.E. Preferred) and **Entry Level Engineer** (BSCE, EIT Preferred). Looking for motivated individuals to work on challenging marine/waterfront projects throughout the United States and abroad. Individuals should have an interest in structural engineering applications involving waterfront structures. Positions entail underwater inspection, evaluation and design of marine/waterfront structures and travel in a team-oriented environment. This is an excellent opportunity for individuals interested in working on a variety of waterfront/marine projects throughout the United States and abroad for a growing company. Send resume to Appledore Marine Engineering, Inc., 600 State Street, Suite E, Portsmouth, NH 03801 or email yvswasey@appledoremachine.com.


CJOJ, LLC - *Civil Engineer, New Milford, CT.* CJOJ, LLC is a well-established Land Surveying and Engineering company that has been in business for over 70 years. Typical projects include site planning, subdivision design and commercial development. Requirements: CT Engineer License, strong communication skills, experience in grading, site design and Autocad. This position offers stability and challenge with competitive pay. Please email resume to cjo3@snet.net or contact C.J. at 860-354-5452

CME Associates, Inc. – *Highway and/or Traffic Engineer* - CME is a full-service architectural, engineering and environmental consulting firm with three offices in Connecticut. The firm is seeking a full-time Highway Traffic Engineer in its East Hartford location. The ideal candidate has a B.S. in Civil Engineering with a concentration in traffic and/or highway engineering preferred, with 3-6 years experience. Knowledge of CADD is required while experience in Microstation and In-Roads considered a plus. Check for more details on the website www.cmeengineering.com. Interested candidates should send a cover letter and resume to: Human Resources, CME Associates, Inc., 32 Crabtree Lane, Woodstock, CT 06281. CME is an Equal Opportunity Employer.

GeoDesign, Inc., a geotechnical, construction and environmental engineering firm, has several opportunities for *geotechnical engineers*, entry level and above. Masters degree, and E. I. T., or P. E. preferred. We offer competitive salary and benefits packages. Contact Randall T. States, P.E. (203) 758-8836, ext. 111, by fax: (203) 758 8842 or by Email: rtstates@geodesign.net GeoDesign is an Equal Opportunity Employer.


CONSULTING ENGINEERS
PURCELL
ASSOCIATES

**Engineering:
Designed to Create Value**



Civil & Site Structural Transportation

90 National Dr., Glastonbury, CT t: 860-633-8341 f: 860-633-1068
Boston, MA • www.purcellassociates.com

GNCB 

Gibble Norden Champion Brown
Consulting Engineers, Inc.

130 Elm Street
P. O. Box 802
Old Saybrook, CT 06475
Tel 860.388.1224
Fax 860.388.4613
info@gncbengineers.com
gncbengineers.com

- Structural Engineering
- Geotechnical
- Historic Preservation
- Construction Services
- Investigation
- Threshold Review

Diversified Technology Consultants one of CT's leading engineering firms has several positions available for our expanding North Haven and Norwich offices. DTC is an award winning, top 500 multidisciplined design firm. For over 29 years our firm has provided consulting services in planning, landscape architecture, MEP engineering and construction administration to municipal, state & federal agencies and private industry on a nationwide basis. To learn more about DTC visit our web site @ teamdtc.com

We are seeking several **Civil Engineers** w/2+ years experience. Emphasis on site plan development, stormwater management plans, specs., construction admin & cost estimates. Projects include large multidisciplinary institutional contracts to 70 million. Must be proficient in AutoCAD and LDD. Experience in Haestad StormCad and HEC-HMS a plus

We also have a need for a **Sr. Highway Engineer , PE** with 7-10 years experience in CT & Mass highway & bridge design. PE, Microstation & AutoCad req'd. Experience working with DOT and possessing good communication and project management skills desirable.

In addition, we have a new opportunity for a **Structural Engineer**. Must have strong knowledge of building codes, construction industry standards and a minimum of 3 years of design experience in steel, concrete & masonry structures. Experience in Ramframe software a must, RISA & Rivet a plus. Bachelor's degree in Civil/Structural Engineering required, PE preferred.

We offer an excellent benefits package that includes medical & dental, competitive salary, 401k program and a comfortable work environment. Please fax/email resume: 203-234-7376 hr@teamdtc.com.

McNary Bergeron & Associates specializes in design and construction engineering for all phases of complex bridge projects. We are growing and looking for structural engineers in our Connecticut and Colorado offices. Are you one of us? Please visit our website at www.mcnarybergeron.com. We accept resumes in confidence at bridges@mcnarybergeron.com.

Ocean and Coastal Consultants, Inc. currently has an opening in our Trumbull, CT office for an experienced **Geotechnical Engineer** for US and international waterfront and structural projects. The ideal candidate will have soil-structure interaction expertise, 5 to 10 years of design experience, a Professional Engineer license and an interest in international travel, through our parent company COWI A/S (www.cowi.com). A Masters degree with specialization in Geotechnical Engineering is preferred. Fieldwork will be required. Ocean and Coastal Consultants, Inc. is an "Affirmative Action/Equal Opportunity Employer".


Ocean and Coastal Consultants, Inc. (OCC) has an experienced team of professionals providing complete coastal and waterfront engineering solutions with a commitment to quality and attention to customer satisfaction. OCC, with offices in Connecticut, Massachusetts, and New Jersey, offers opportunities to work on challenging and diverse projects, a positive work environment, and competitive salaries and benefits. Our affiliation with COWI, an internationally acclaimed engineering firm, provides our employees with opportunities for career enhancement and a world class employment experience. You can visit our website www.ocean-coastal.com for more information and to apply on-line or email Joseph Marrone, P.E. at jmarrone@ocean-coastal.com.

Siefert Associates, LLC is seeking a motivated *Civil Construction Engineer - Structural Engineer* with field savvy and structural engineering experience, with geotechnical knowledge helpful. Our challenging projects include Bridges of all types, Railroads, Subways, Marine Facilities, Foundations, Utilities, Power plants, and more. Current sites include Triboro Bridge, Tappan Zee Bridge and World Trade Center Transportation Hub. We provide Working Drawings and Calculations, tailored to the preferred Means and Methods of Contractors for ongoing construction projects. BS and EIT Required, Current P.E. registration is preferred. This position comes with top pay, fringe benefits and future advancement potential. Contact Vincent Siefert P.E., 203-723-1477 www.siefertassociates.com.

Structural Consulting Services, P.C. – *Structural Engineer* - Structural Consulting Services, P.C. is a fast growing structural engineering firm located in Brookfield, CT. We specialize in new building construction & renovations and in shoring, sheeting & underpinning designs for the construction industry throughout the metro New York City area and New England. We have an immediate need for an experienced *Structural Engineer* with a minimum of 5 years U.S. design experience in building design and/or construction support designs. BSCE or MSCE required, PE preferred and proficiency with AutoCAD a plus. Candidate must have good communications skills, be highly motivated and a practical designer with the ability to handle multiple projects. We offer a competitive salary and benefits package including medical, dental, 401(k), paid holidays, vacation & personal/sick time, and paid professional license registrations & renewals. Please submit a cover letter & resume via mail, fax or email to: 67 Federal Road, Brookfield, CT 06804; (203) 740-7578 Phone; (203) 775-5670 Fax; info@scs-pc.com Email.

Wengell, McDonnell & Costello, Inc., located in Newington, CT, is currently seeking individuals for the following positions: *Structural Engineers, Hydraulic Engineers, CADD Operators/Civil Engineering Technicians, and Construction Inspectors*. For more information, please call us at (860) 667-9624 or visit our website at www.wmcengineers.com. EOE M/F

Zieman Engineering, LLC – *Structural Engineer/Construction Engineer* – Zieman Engineering is a structural engineering firm specializing in designing construction procedures, temporary structures and specialized equipment for contractors involved in major and complex construction projects throughout the northeast. Typical projects include significant bridge erection procedures, heavy lifting, rigging and jacking operations of all kinds, and temporary structures for rehabilitation projects. We seek a BSCE with minimum 5 years experience in either structural design or field engineering for a contractor. Must be a creative and practically oriented problem solver with an interest in structural design as well as construction field operations. Competitive salary and benefits. Flexible hours are possible if needed to ease commuting. For additional information, see www.ziemanengineering.com. Please email resume to tz@ziemanengineering.com.

 HALEY & ALDRICH	<i>15 Offices Nationwide</i>
UNDERGROUND ENGINEERING & ENVIRONMENTAL SOLUTIONS	800 Connecticut Boulevard Suite 100 East Hartford, CT 06108-7303 Tel.: 860.282.9400 Fax: 860.282.9500 info@HaleyAldrich.com www.HaleyAldrich.com

 THE DI SALVO ERICSON GROUP	Structural Engineers, Inc. 43 Coops Hill Road Ridgefield, CT 06877 203-438-9581 106g.com
	Celebrating 30 Years of Structural Engineering for the Construction Industry

2007-2008 CSCE EXECUTIVE BOARD

President - Christopher M. Holden, P.E.

162 Apple Tree Lane
Portland, CT 06480
860-343-8085, Ext. 155 Office
860-343-8091 Fax
860-883-4028 Cell
President@csce.org

President-Elect - Ronald J. Nault, P.E.

Luchs Consulting Engineers, LLC
DeCarlo & Doll Architects/Engineers
1952 Whitney Avenue
Hamden, CT 06517
203-288-5188, Ext. 207 Office
203-288-2583 Fax
President-Elect@csce.org

Vice President - Rabih M. Barakat, P.E.

Connecticut Department of Transportation
2800 Berlin Turnpike
Newington, CT 06131-7546
860-594-3389 Office
860-594-3373 Fax
203-397-2996 Home
Vice-President@csce.org

Treasurer - Gregory K. Holness, P.E., Esq.

Permasteelisa North America Corp.
123 Day Hill Road
Windsor, CT 06095
860-298-2000 Office
Treasurer@csce.org

Secretary - Jason F. Waterbury, P.E.

Clean Water Project
The Metropolitan District
555 Main Street, P.O. Box 800
Hartford, CT 06142-0800
860-278-7850 Ext. 3380 Office
860-525-5013 Fax
Secretary@csce.org

Newsletter Editor - Peter M. Heynen, P.E.

Heynen Engineers
380 Maple Avenue
Cheshire, CT 06410
203-439-0063 Office
203-439-7036 Fax
203-645-3287 Cell
NL-Editor@csce.org

Director II - William J. Cunningham, P.E.

Siefert Associates, LLC
180 Church St., Suite 6
Naugatuck, CT 06770
203-723-5830 Office
203-723-9346 Fax
860-582-7893 Home
Director-II@csce.org

Director I - James L. Silva, P.E.

Silva Engineering, LLC
Windham Mills Technology Center
322 Main St., Bldg. 2, 2nd Floor East
Willimantic, CT 06226
860-423-4506 Office
860-423-1875 Fax
860-429-4370 Home
Director-I@csce.org

Director, ASCE District 2, ASCE Region 1

Governor - Paul D. Moyer, P.E.
Carter::Burgess, Architects, Engineers, and Planners
465 Medford Street, Suite 300
Charlestown, MA 02129
857-588-5500 Office
617-225-0216 Fax
617-438-3568 Cell
Paul.Moyer@c-b.com

TECHNICAL GROUP CHAIRS

Construction - William J. Cunningham, P.E.

Siefert Associates, LLC
180 Church St., Suite 6
Naugatuck, CT 06770
203-723-5830 Office
203-723-9346 Fax
860-582-7893 Home
Director-II@csce.org

Geotechnical - Gary J. Fuerstenberg, P.E.

GEI Consultants
455 Winding Brook Drive
Glastonbury, CT 06033
860-368-5300 Office
860-368-5307 Fax
gfuerstenberg@GELconsultants.com

Structures - Bryan Busch, P.E.

CME Associates, Inc.
333 East River Drive, Suite 400
East Hartford, CT 06108
860-290-4100 ext. 11 Office
860-290-4114 Fax
bbusch@cmengineering.com

COMMITTEE CHAIRS

Programs - Jeff Benoit, P.E.

Connecticut Department of Transportation
40 Taft Pond Road
Pomfret Center, CT 06259
860-974-2572 Home
jeffbenoit@earthlink.net

Legislative Affairs - Roy Merritt, P.E.

HNTB Corporation
1880 Silas Deane Highway
Rocky Hill, CT 06067
860-257-7377, Ext. 23 Office
860-670-7540 Cell
860-257-7394 Fax
rmerritt@hntb.com

Continuing Education - Ronald J. Nault, P.E.

Luchs Consulting Engineers, LLC
DeCarlo & Doll Architects/Engineers
1952 Whitney Avenue
Hamden, CT 06517
203-288-5188 Ext. 207 Office
203-288-2583 Fax
President-Elect@csce.org

Scholarship Fund - Jim Sime, P.E.

Connecticut Department of Transportation
280 West Street
Rocky Hill, CT 06067
860-258-0309 Office / 860-569-4186 Home
860-258-0399 Fax
james.sime@skiltons.org

Membership - Jason F. Waterbury, P.E.

Clean Water Project/The Metropolitan District
555 Main Street, P.O. Box 800
Hartford, CT 06142-0800
860-278-7850 Ext. 3380 Office
860-525-5013 Fax
Secretary@csce.org

Water Resources - Thomas A. Loto, P.E., BCEE

Malcolm Pirnie, Inc.
100 Roscommon Drive, Suite 100
Middletown, CT 06457
860-613-7407 Office
860-860-632-0036 Fax
860-830-1418 Cell
tloto@pirnie.com

Government Engineers - Rabih M. Barakat, P.E.

Connecticut Department of Transportation
2800 Berlin Turnpike
Newington, CT 06131-7546
860-594-3389 Office
860-594-3373 Fax
203-397-2996 Home
Vice-President@csce.org

Younger Members - Sara Ramsbottom, P.E.

Connecticut Department of Public Health
410 Capitol Avenue, MS# 51 WAT
P.O. Box 340308
Hartford, CT 06134-0308
860-509-7333 Office
sara.ramsbottom@ct.gov

Career Guidance - Kiran Majmudar, P.E.

L.P. Consultants
252 Hazard Avenue
Enfield, CT 06082-4613
860-749-0733 Office/Fax
LPConsultants@snet.net

Web Site - Peter M. Heynen, P.E.

Heynen Engineers
380 Maple Avenue
Cheshire, CT 06410
203-439-0063 Office
203-439-7036 Fax
203-645-3287 Cell
pheynen@heynenengineers.com

History & Heritage - Randall T. States, P.E.

GeoDesign, Inc.
984 Southford Road
Middlebury, CT 06762
203-758-8836 Ext. 111 Office
203-758-8842 Fax
203-530-5423 Cell
rtstates@geodesign.net

FACULTY ADVISORS

Central Connecticut State University

Clifford Anderson, Ph.D., D.WRE

Assistant Professor
Department of Engineering
Copernicus Hall Room 21207
1615 Stanley Street
New Britain, CT 06050-1040
860-832-1849 Office
andersonc@ccsu.edu

Three Rivers Community-Technical College

Diba Khan-Bureau

Professor & Program Coordinator
Environmental & Civil Engineering Technology Programs
574 New London Turnpike
Norwich, CT 06360
860-885-2383 Office
860-886-4960 Fax
dkhan-bureau@trcc.commnet.edu

University of Connecticut

Richard Christenson, Ph.D.

Assistant Professor
Department of Civil and Environmental Engineering
University of Connecticut
261 Glenbrook Rd., UNIT-2037
Storrs, CT 06269
860-486-2270 Office
860-486-2298 Fax
Richard@enr.uconn.edu

University of New Haven

Jean Nocito-Gobel, Ph.D.

Department of Civil & Environmental Engineering
300 Boston Post Road
West Haven, CT 06516
203-932-7155 Office
203-932-7158 Fax
jnocitogobel@newhaven.edu

United States Coast Guard Academy

Hudson Jackson, Ph.D., P.E.

Engineering Department
15 Mohegan Avenue
New London, CT 06320-8103
860-444-8315 Office
860-444-8546 Fax
Hudson.V.Jackson@uscga.edu

University of Hartford

David Pines, Ph.D.

Chair and Associate Professor
Department of Civil, Environmental &
Biomedical Engineering
200 Bloomfield Avenue
West Hartford, CT 06117
860-768-4560 Office
860-768-5073 Fax
pines@hartford.edu

FAIRFIELD BRANCH

President - Ron Hill

15 East Ridge Road
Ridgefield, CT 06877
203-788-8021 Cell
203-431-0442 Home
RonaldPHill@comcast.net

2008-2009 CSCE NEWSLETTER ADVERTISING RATES

Options

A. Business Card (reduced to approx. 1 1/2" X 2 5/8")

B. One-Quarter Page

C. One half 8-1/2 x 11 in. Advertisement

D. One full 8-1/2 x 11 in. Advertisement

E. Employment Classified Ad: In-State Position

F. Employment Classified Ad: Out-of-State Position

Prices

\$400 min 6 issues
\$90 per issue

\$750 min 6 issues
\$175 per issue

\$325 per issue

\$550 per issue

\$15 / line / issue

\$20 / line / issue

Employment Classified Ads of five (5) lines or less (subject to editing) for in-state positions are published free of charge as a professional courtesy to our membership. We anticipate publishing at least eight issues per year. There are approximately 1500 subscribers to the CSCE Newsletter.



MEMORANDUM

TO: ASCE Board of Direction
Region Boards of Governors
Section and Branch Presidents and Newsletter Editors

FROM: Patrick J. Natale, P.E., F.ASCE
Secretary

DATE: December 19, 2008

SUBJECT: President-elect Nominee Information

As announced on December 9, 2008, the following individuals, shown in alphabetical order, have submitted a letter of intent to seek the nomination for the office of President-elect as defined in the Society's Bylaws.

Kathy J. Caldwell, P.E., M.ASCE
Moustafa A. Gouda, P.E., F.ASCE
Garland P. Rose, Jr., P.E., D.WRE, F.ASCE

The Society's goal for the election is to provide a fair and impartial framework affording Nominees with equal opportunity to promote their qualifications and ensure an informed electorate while shielding members from unwanted intrusions.

Enclosed are the approved biographical and vision statements received from the Nominees. These documents are being forwarded to the Organizational Entities for their use in promoting the Nominees and their qualifications to your members.

Organizational Entities may publish the biographical and vision statements on their web site and newsletter, provided the same information is published for each Nominee within the same office. If an Organizational Entity has voted to endorse an individual, that endorsement statement may be included on the web site and/or newsletter. Organizational Entities should also encourage their members to vote in the national election. It is a good idea to educate the members on the Society's governance structure and explain issues such as non-contested elections.

The Society manages the Society-level election process. Election questions and conflicts should be referred to the Society Secretary through Patricia Jones for resolution. You may reach Patricia at 703/295-6101 or via e-mail at pjones@asce.org.

cc (w/enc): President-elect Nominees

KATHY CALDWELL, P.E., M. ASCE BIOGRAPHICAL INFORMATION

Kathy Caldwell, P.E., graduated from the University of Tennessee with High Honors in Structural and Construction Engineering in 1985 after employment as a drafter and field technician for nine years following high school. Upon college graduation, she was a structural designer with Lockwood Greene in Oak Ridge, Tennessee. Kathy moved to Austin, Texas in 1987 and joined Parkhill Smith and Cooper where she was commended by the Texas Department of Highways and Public Transportation for her work as a design consultant. During this time, her husband completed his PhD in Structural Engineering at the University of Texas.

Kathy joined Jones Edmunds and Associates, Inc. (Jones Edmunds) in Gainesville, Florida in 1989. During her 19 years with the firm, she served public works clients as a Design Engineer, Project Manager, and Senior Construction Resident Engineer. She became a Division Manager, Vice President, and Executive Committee member. During her tenure, she participated in the development of the firm's Strategic Plan, was tasked to manage Plan implementation, and served as a member of the senior leadership team that integrated the five elements of the Plan into the firm's culture and operations.

Kathy led the successful establishment of a new market sector for the firm, ultimately resulting in her being named President of JEA Construction Engineering Services, Inc. (JEAces), a wholly owned subsidiary of Jones Edmunds, in 1999. The subsidiary grew to generate 25% of Jones Edmunds net revenue in its first five years of operation. Kathy retired from her position at JEAces in May of 2008 and is now in the process of incorporating a private Civil Engineering consulting firm.

Kathy has been an active, service-oriented member of ASCE since 1984. She was President of the Gainesville Branch in 1993/1994 and was the first president of the consolidated Florida Section (1999/2000). Her organizational and leadership skills contributed to the adoption of the Bylaws and Rules for Region 5. Kathy remains active with the Gainesville Branch, the Florida Section, and Region 5 and is a member of the Construction Institute. Kathy is a long and passionate proponent of ASCE's Student Member program and is a Practitioner Advisor for the University of Florida Student Chapter. Most recently, Kathy served on the ASCE Board of Directors and Executive Committee while chairing the Region 5 Board of Governors and the Society's Strategic Planning Committee.

In addition to her professional successes, Kathy is proud to have been honored as an Outstanding Alumni by the University of Tennessee Department of Civil and Environmental Engineering.

Kathy J. Caldwell, P.E., M. ASCE
BIOGRAPHICAL INFORMATION

ASCE Member Number

226076

Address of Record

60 NW 44th Terrace
Gainesville, FL 32607

Contact Information

Telephone: (352) 375-1287
Cell: (352) 214-8085
E-Mail: kathyjccaldwell@bellsouth.net



Education

- Bachelor of Science with high honors, major in structural engineering, minor in construction engineering, University of Tennessee, Knoxville, 1985

Work Experience

- President, Caldwell Cook & Associates (incorporation pending), May 2008 to present
- President, JEA Construction Engineering Services, Inc. (subsidiary of Jones Edmunds & Associates, Inc.), July 1999 to May 2008
- Vice President, Jones Edmunds & Associates, Inc., January 1994 to May 2008
- Design Engineer /Project Manager / Assistant Division Manager / Division Manager, Jones Edmunds & Associates, Inc., October 1989 to July 2000
- Structural and Civil Engineer, Parkhill Smith & Cooper, Inc., Austin, Texas, October 1986 to October 1989
- Structural Designer, Lockwood Greene Engineers, Inc., Oak Ridge, Tennessee, July 1985 to July 1986
- Engineering Technician, Gilbert Associates, Inc., Knoxville, Tennessee, November 1981 to September 1982
- Designer, United Engineers & Constructors, Inc., Knoxville, Tennessee, January 1980 to November 1981
- Drafter / Designer, Dow Chemical Company, Knoxville, Tennessee and Houston, Texas, October 1975 to December 1979

ASCE Involvement

- Member, 1984 to present
- Executive Committee, 2008
- Board of Direction, 2005 - 2008
- Strategic Planning Committee
 - Chair, 2008
 - Member, 2008 and 2009
- Region 5 Board of Governors
 - Member, 2006 to 2008 (precluded by Transition Committee member)

- Chair, 2008
- Member, Educational Activities Committee, 2006 to 2008
- Member, Policy Review Committee, 2007
- Officer Liaison, Engineers Joint Contract Documents Committee, 2006 to 2007
- Member, Construction Institute
- Committee on Student Services (currently Committee on Student Activities)
 - Member, 1995 to 1999
 - Chair, 1997
- President, Florida Section, 2000
- President, Gainesville Branch, 1994
- President, University of Tennessee Student Chapter, 1985
- Practitioner Advisor, University of Florida, 1989 to present
- Chair, Science Fair Committee, Florida Section, 1991 - 1994
- Chair, Student Activities Committee, Florida Section, 2002 to 2004
- Member, Local Planning Committee, 2010 Structures Congress, August 2008 to present
- Corresponding Member, Geographic Units Committee, September 2008 to present
- Multiple Task Committees including:
 - Florida / South Florida Section Consolidation Committee, Chair
 - Region 5 Transition Committee, Chair
 - Task Committee on Election Procedures

Other Volunteer Activities

- Member, Engineers without Borders
- Member, Transportation Committee, Florida Institute of Consulting Engineers,
- Member, CEI Sub-Committee, Florida Institute of Consulting Engineers
- Member, Florida Engineering Society
- Treasurer, Clear Lake Homeowners Association, 1999 - Present
- University of Florida Department of Civil and Coastal Engineering External Advisory Panel, 2004 - Present
- Assistant Study Team Member, Post-Disaster Study regarding Hurricane Hugo, National Academy of Science, Committee on Natural Disasters, 1989
- Participant in multi-media program to advance licensure, National Council of Examiners for Engineering and Surveying (NCEES), reference: www.engineeringlicense.com/careers/kat.php
- Member, Chi Epsilon
- Member, Tau Beta Pi

Awards

- ASCE Florida Section President's Award, 2006 and 2008
- Outstanding Alumnus Award, Department of Civil Engineering, University of Tennessee, 2005
- Outstanding Committee Chairman of the Year, ASCE Florida Section, 1994
- Engineer of the Year, ASCE Florida Section, 1996
- Engineer of the Year, ASCE Gainesville Branch, 1995
- Nominee, ASCE Extraordinary Women Engineers Project

Personal

- Mother is a Civil Engineer
- Married to Professor Ronald A. Cook, PhD, P.E., M. ASCE
- Avid International and domestic traveler

KATHY CALDWELL, P.E., M. ASCE
Vision for THE AMERICAN SOCIETY OF CIVIL ENGINEERS

MOVE FORWARD

ASCE is embarking on an exciting journey into the future. Our destination has been defined, our roadmaps are being entered into our GPS, and our itinerary is being planned. The time has come to start our engines and MOVE forward.

M	Member Driven and Member Focused
O	Opportunity
V	Vision
E	Excitement

M: Member-Driven and Member-Focused

We are the American Society of Civil Engineers. As implied in those words, a guiding principle of the Society is to provide first-class service to our members. To do this consistently, the Society must be member-driven and member-focused at all times.

Many of our members participate in ASCE through our Sections and Branches and, increasingly, through our Regions. The breadth and depth of the programs being delivered by our Geographic Units is truly phenomenal. The culture of the geographic units is based on member and community service. Preserving and nurturing that culture throughout the Society will MOVE us forward.

Many of our members also participate in ASCE through our eight Institutes. Their culture is focused on technical excellence. Embracing the mission, ability, and motivation of the Institutes to deliver world-class technical resources will MOVE our Society forward.

O: Opportunity

The flexibility of our Strategic Planning and Strategy Management process allows us to act today. The wisdom of our Vision for 2025 ensures that our near-term actions will have long-term benefit.

The future leaders of our Profession and our Society are our Student and Younger Members. They represent a culture of teamwork, social consciousness, connectivity, and advanced technology. They genuinely want to make the world a better place. They represent a challenge and an opportunity for ASCE to remain relevant. Our methods of communication, our social and professional networking, and our program development and delivery must all adapt. Successfully engaging these future professionals now will dynamically MOVE us forward.

ASCE has been very successful in our government relations efforts to positively influence public policy. With the new national emphasis on infrastructure renewal, the opportunity to build on our role as advisors and recognized experts on infrastructure and protection of the public health, welfare, and safety has never been greater. Elevating the use of our 2009 Report Card to include tangible action plans, including improved public works policy and infrastructure development and maintenance plans, will MOVE us forward.

V: Vision

ASCE's vision is identified in our Vision for Civil Engineering in 2025, supported by our Body of Knowledge for the 21st Century, and our on-going Strategic Planning and Strategy Management process. We are poised to aggressively MOVE forward by aligning these activities to optimize our resources. Wise, effective, and efficient use of our resources will also require the prioritization of ASCE's current programs and services.

Vision 2025 provides a comprehensive set of five outcomes. ASCE's immediate actions should focus on:

- Promotion of infrastructure improvement and comprehensive planning for its continued development, maintenance, and operation. This includes the incorporation of the concepts of sustainable and secure development.
- Creation of a collaborative environment to facilitate cross-communication and engagement between our Elected Leaders, Committees, Institutes, Geographic Units, and Staff under a common vision.
- Adoption of the NCEES Model Law, which embraces ASCE Policy Statement 465 – Academic Prerequisites for Licensure and Professional Practice, by State Legislatures and Professional Licensing Boards. This will require a more detailed definition of the “+30” education requirements beyond the Bachelors Degree.
- Integration of the Roadmap to Achieve the Vision for Civil Engineering in 2025 with the on-going Strategic Planning and Strategy Management process.

These actions will MOVE us forward.

E: Excitement

C'mon – Civil Engineering IS exciting! Engineers Without Borders is an excellent example of a program that has created tremendous excitement within our Society. ASCE's entirely new, imaginative, and highly interactive online presence will also create tremendous excitement in the near future. Many other exciting initiatives come forward each year. Generating a “buzz” around the opportunities to serve our members, to

advance our profession, and to improve the global quality of life makes membership in ASCE fun (yes – fun!) and rewarding. Excitement will MOVE us forward.

We have amazing Members, marvelous Opportunities, clear Vision, and real Excitement. Those are all the resources we need for a successful journey. Let's put them all together now and MOVE forward!



Biographical Statement for ASCE President-Elect Nominee Nominated By The New Jersey Section Moustafa A. Gouda, P.E., F.ASCE

Education

- MS, Civil Engineering, NJIT – 1982
- MS, Geotechnical Engineering, Cairo University – 1968
- BS, Civil Engineering, Cairo University – 1964
- Licensed Professional Engineer in NY, NJ, PA, KS, IN, MA, FL, DE, MD, VA, & IL

Honors and Awards

- Philadelphia Civil Engineer of the Year, 1987
- Central Jersey Outstanding Civil Engineer of the Year, 1995
- South Jersey Distinguished Engineer of the Year, 1999
- US Congress declared May 16, 1999 as Moustafa Gouda Day in the NJ first district
- Life Time Achievement Award by the Delaware Valley Engineering Council for Services to the Engineering Community, 2006

Work Experience

- 1999-Present, Principal, CMX, Manalapan, NJ
- 1980-1999, Principal, Lippincott, Jacobs & Gouda, River Side, NJ
- 1978-1980, Project Manager, Mueser Rutledge, NY, NY
- 1972-1978, Project Manager, Raamot Associates, NY & NY
- 1970-1972, Project Engineer, Frank H. Lehr, East Orange, NJ
- 1964-1969, Resident Engineer, Grand Hotel Construction, Egypt

MOUSTAFA A. GOUDA, PE, F.ASCE, is a Senior Vice President of CMX of Manalapan, New Jersey. He is a licensed professional engineer in eleven states. Mr. Gouda has amassed more than 45 years of professional experience and 30 years involvement with ASCE local sections and branches and 19 years of services on the ASCE board of direction and board of direction committees.

Moustafa is widely recognized for his outstanding contribution to the civil engineering profession in general, and in the field of geotechnical and geo-environmental engineering in particular. In addition to his professional work, Mr. Gouda has also served as an adjunct professor at the New Jersey Institute of Technology, Rowan University, and Associate Professor at Mercer County College.

Moustafa's involvement with ASCE locally and nationally is a long-standing one, spanning over 30 years. He served as President of the Philadelphia and New Jersey Sections and the Central Jersey Branch. He also served on District 1 and 4 District Councils for many years. He served as District 1 director for three years and served for two years as society treasurer and member of the executive committee. Mr. Gouda served as chair of several board committees, including, Membership Benefits, Programs, Investment and Finances committees. He is currently a governor of the Geo-Institute and Chair of the Engineer Joint Contract Document Committee EJCDC. He was member of several committees including Membership, International Activities, Policy Review and Strategic Planning.

For his service to engineering, Moustafa was named the 1987 Philadelphia Civil Engineer of the Year, the 1996 Central Jersey Outstanding Engineer, and the 1999 South Jersey Distinguished Engineer. In 2006, he received a life time achievement award from the Delaware Valley Engineering Council for services to the engineering communities. Moustafa services in South Jersey earned him special honor by the US Congress. The US Congress declared May 16, 1999 as Moustafa A. Gouda Day in the NJ first congressional district.

Moustafa remains very active in the New Jersey ASCE section and serves as the Chair of the Section Awards Committee. He actively promotes civil engineering interests in NJ and in region 1.



Biographical Statement for ASCE President-Elect Nominee Nominated By The New Jersey Section Moustafa A. Gouda, P.E., F.ASCE

OTHER VOLUNTEER ACTIVITIES

Civic Activities

- Marlboro Soccer Association, Soccer Referee
- Marlboro Little League Baseball Coach

Charitable Activities

- 1985-Present, Member of the Board of Trustees of Burlington County College Foundations
- 1990-1991, Chair of the Foundation
- 1988-1995, Chair of Auction Committee raising funds for Scholarships

Teaching Experiences

- NJIT Adjunct Professor
- Rowan University
- Mercer County College

Publications

- Innovative Design & Construction for Toe - In Sheet Piling in Bedrock, 2008
- Distress to Buildings on Loose Ash & Cinders, 1998
- Cold Recycling of Pavement, 1982

Other Information

- Moustafa married Nelly Abdel-Sayed on February 14, 1970; they have two (2) children Tamer and Saher.

ASCE INVOLVEMENT – MEMBERSHIP LEVEL - FELLOW

National Level

2008- Present	Governor of the Geo-Institute
2005 - 2007	National Treasurer and Member of Exec. Committee
1999 - 2002	District 1 Director
2008 - Present	Chair of EJCDC (member since 2002)
2005 - 2007	Chair of Finance Committee
2003 - 2005	Chair Investment Committee
2000 - 2002	Chair Program Committee
1991 - 1997	Chair Members' Benefits Committee
2007 - Present	Strategic Planning Committee
2006 - 2007	Task Committee on Institute Operation Procedures
2003 - 2005	National Assistant Treasure
2000 - 2003	International Activity Committee
1997 - 1998	Policy Review Committee
1991 - 1997	Membership Committee

New Jersey Section

1995 - 1996	NJ Section President
1994 - 1998	Board Member
1997 - 1998	Chair of NJ 150th Anniversary Committee
1994 - Present	Chair of Award Committee
1994 - 1997	Member of the Legislative Committee.
1994 - 2002	District 1 Council Member

NJ Central Branch

1993 - 1994	Branch President
-------------	------------------

Philadelphia Section

1982 - 1990	Chair of the Geotechnical Committee
1985 - 1995	Member of the Board
1991 - 1992	Section President
1988 - 1992	District 4 Council

MOUSTAFA A. GOUDA, P.E., F.ASCE

Vision Statement

ASCE is an organization that provides great services to our Civil Engineering community and our citizens. Our core value is servicing our members and our commitment to our profession. This core value must be preserved and enhanced. While preserving and enhancing our core values, we need to do soul searching and make tough decisions to accomplish **two Roadmaps to Sustain our Success** a) **The Roadmap to Destination 2025**, "The Civil engineer would be entrusted by Society to help achieve a sustainable world and raise the global quality of life," b) **The Roadmap to Continuous Constructive Change**" what programs we are doing today and need to do more of in the future" ," What programs we are doing today that should be done differently in the future" and "What new programs we need start in the future".

I want to use my 45 years of USA and international professional experience, 28 years of ASCE local Sections and Branches involvement and my 19 years affiliation with the ASCE National Board of Direction as District 1 Director, Society Treasurer, Member of the Executive Committee and Chair of Major Board Committees to help steer our ship through uncharted water of Continuous Constructive Changes that we need to undertake to sustain our success. To that end, the Goal of my Presidency will center on implementing the above mentioned two roadmaps and evaluating changes concerning:

1. **MEMBERS' BENEFITS AND PROGRAMS;**
2. **POLICY;**
3. **STRATEGY and ADVOCACY;**
4. **EDUCATION;**
5. **UNIFICATION;**
6. **FISCAL RESPONSIBILITY.**

MEMBERS' BENEFITS AND PROGRAMS: In order for ASCE to grow and meet the future challenges, ASCE shall continue to provide and improve members' *benefits and programs*. I want to make sure that as a profession we are continuing to *move forward* assisting our members so they can have a better work environment, better opportunities, better education

and better compensation for their services. Our compensation shall commensurate with our public health and safety responsibilities and the values we provide to the world. ASCE leadership in raising the bar, in influencing public policy on infrastructures, and in advancing technology, all work to serve our members

POLICY: ASCE shall continue to be the *Stewards of public policy*. Policy is the heart of ASCE and the result of labor of its members. Shaping and directing the policy cannot be left to others. ASCE shall and will continue to direct and publicize the policies that affect the quality of life of our citizens.

STRATEGY and ADVOCACY: ASCE needs to continue to press on with the *strategic planning* to implement our policies. We need to press on with *advocacy* putting all our resources behind our policy and strategy. We need to advocate infrastructure solutions, not only infrastructures problems. We shall and must dedicate more resources to support our initiatives. **We Must Water What We Want to Grow.**

EDUCATION: ASCE shall continue to *educate* not only its members with information and technology, but also educate the public servants and the public at large regarding the need to increase funding for infrastructures. We must continue to *raise the bar* by influencing, reforming and shaping the future engineering educational curriculum.

UNIFICATION: ASCE shall work harder to *unite the Civil engineering profession* under the banner of the common good for all Civil Engineers. On the issue of unification my goal is to get all Civil Engineering Associations to agree to have *one single voice* that gets heard loud and clear in the Court of *Public Opinion* in Washington DC and in every State Capital around our Nation.

Fiscal Responsibility: To implement our Policies and support our strategic planning and advocacy we need continue our *fiscal responsibility*. As the immediate past Society Treasurer I know first hand that ASCE finances are healthy with a balanced budget, adequate reserve and proper financial management personnel and tools in place. ASCE shall work harder to reserve its assets while allowing adequate resources for programs and for support of strategic planning and advocacy.

Should you honor me and select me to serve as ASCE President Elect, I will spend my first year in office focusing my efforts on the needs of our members locally and internationally. Increasing and improving communications with our national and international members is important for our long term sustained success.

As President Elect and President, I plan to work with our Members, Regions, Sections and Branches and Institutes to get our members engaged. I want to see that every Member is on board, embracing the ***"all on board" philosophy***, contributing to sustaining ASCE success through full support of ASCE Strategic Planning , Initiatives and Policies. I want to encourage all ASCE Members to become active participants in their communities. I know first hand that Civil Engineers can translate their knowledge of basic applied science into civic problem solving and have the same satisfaction that several Civil Engineers found – when they made a difference in their community.

Confidence, transparency and effective communication will mark and symbolize my presidency. You all have my personal commitment for the full-time effort that is required to lead ASCE. I look forward to working with all of you and to continue my services to ASCE.

Garland P. Rose, Jr., P.E., D.WRE, F.ASCE

2010 President-Elect



Biographical Statement

Education and Registration

- Bachelor of Science, Industrial Engineering, University of Tennessee, Nashville, 1975
- Bachelor of Engineering, Civil Engineering, Vanderbilt University, 1966
- Registered Professional Engineer: Georgia, Kentucky, North Carolina, Tennessee, Texas, Vermont, Virginia

Work Experience

- Barge Waggoner Sumner and Cannon, Inc.; Nashville, Tennessee (1975-present)
 - Chairman of the Board (2005-present)
 - Regional Manager, Nashville (2002-2006)
 - Division Manager, Environmental (1989-2001)
 - Member of the Board of Directors since 1985
 - Office Manager, Morristown & Tri-Cities, Tennessee (1977-1988)
 - Project Manager (1977-1985)
 - Assistant Project Manager (1975-1976)
- Consoer Townsend and Associates; Nashville, Tennessee (1973-1975)
 - Resident Engineer
- Yearwood Johnson, Architects; Nashville, Tennessee (1972-1973)
 - Field Representative
- United States Air Force; Ohio, South Korea, New York (1967-1972)
 - Civil Engineering Officer, Honorably Discharged, Captain

ASCE Involvement

- Life Member (2009)
- Member, Nashville Branch, Tennessee Section (current)
- Member, Environmental Water Resources Institute, EWRI (current)
- Diplomate, Water Resources Engineer (D.WRE), (2008)
- Task Committee on Governors' Roles (2008)
- Policy Review Committee (2008)
- Director, District 9; Arkansas, Kentucky, Indiana, and Tennessee (2003-2005)
- Board Financial Committee (2003-2005)
- Board Investment Subcommittee (2003-2005)
- Governance Restructuring Implementation Committee (2003-2005)
- Task Committee on Meetings, Chair (2003-2004)
- Daniel B. Barge, Jr. Distinguished Service Award, Tennessee Section (2002)
- Nashville Branch, Practitioner Advisor, Vanderbilt University (1993-2002)
- Delegate, District 9 Council (1984-2002), Secretary/Treasurer, Vice Chair, Chair (1988-1990)
- Public Involvement Committee, Member Activities Division (1986-1990, Chair 1989)
- Tennessee Joint Engineering Action Group (Chair, 1984)
- President, Tennessee Valley Section (1984)
- President, Knoxville Branch, Tennessee Valley Section (1979)

- Outstanding Young Engineer, Tennessee Valley Section (1978)
- Joined ASCE, Nashville Section (1973)
- ASCE, Student Chapter, Vanderbilt University (1965-1966)

Other Volunteer Associations

- Kiwanis Club of Nashville (1988-Present)
 - Club President (2001-2002)
 - Kiwanian of the Year (1997 and 1999)
 - Chaplin (1995-1996)
 - Board of Directors (1994-1995 and 1996-2002)
- Johnson City Kiwanis Club (1985-1987)
- Morristown Kiwanis Club (1977-1984)
- Vanderbilt University
 - Civil and Environmental Engineering External Advisory Board (2002-present)
 - Chapter Honor Member, Chi Epsilon, National Civil Engineering Honor Society (2001)
 - Nashville Club, Board of Directors (1996-1998)
 - Engineering School Alumni Association (1978-1984)
- Tennessee Society of Professional Engineers
 - Outstanding Engineer Award, Holston Chapter (1987)
 - President, Knoxville Chapter (1980)
 - State Membership Chairman (1979)
 - General Chairman, Engineers Week, Knoxville Chapter (1979)
 - Outstanding Young Engineer, Knoxville Chapter (1978)
- Chambers of Commerce – Tennessee
 - Clarksville Area Chamber of Commerce (1990-Present)
 - Nashville Area Chamber of Commerce (1988-Present)
 - Participant in Music City Leadership Study Mission to Washington, D.C. and Baltimore, Maryland (May 2007). This mission was a launch pad for tackling issues facing Middle Tennessee. This high-impact opportunity took approximately 125 community and business leaders as a delegation to study and examine best practices and lessons learned in selected cities. Ideas brought back to Tennessee changed the face of our region and for many the relationships made changed the face of doing business.
 - Kingsport Area Chamber of Commerce (1984-1988)
 - Morristown Area Chamber of Commerce
 - Board of Directors (1982-1984)
 - Vice President – Public Affairs (1983)
 - Vice President – Community Development (1982)
 - Chamber Industrial Board
 - Public Relations Committee
- Member, General Advisory Committee, Tri-Cities State Technical Institute (1985-1987)
- Alumnus, Leadership Kingsport, Tennessee (1987)
- Chairman, Leadership Morristown, Tennessee (1984)
 - Headed the group responsible for program's direction and curriculum
- Chairman, Morristown-Hamblin County, United Way Campaign (1983)
- Loaned Executive, Mayor's Task Force on Efficiency in Metropolitan Government, Nashville, Operating Committee and Team Leader for Justice Systems and Protective Services (1989)

- McKendree Village, Inc. – A Not-For-Profit Public Benefit Corporation, Nursing and Retirement Facility
 - Board of Directors – Affordable Housing Development at Savannah, Springfield, and Gallatin, Tennessee (1997-2002)
 - Vice Chair, Administrative Operations and Long-Range Planning Committee (1997-1998)
 - Board of Directors (1996-1998)
- American Council of Engineering Companies of Tennessee
 - President, Nashville Chapter (1999-2001)
 - Member, State Board of Directors (1999-2001)
- Junior Achievement of Middle Tennessee
 - Board of Directors (2004-2006)
- Nashville State Tech Community College
 - Architectural/Civil and Construction Engineering Technology Advisory Committee (2000-present)

Personal

- Wife – Mary Jane Nolan Rose
- Daughters – Cynthia R. Murr (Husband, Andrew C. Murr, M.ASCE), Birmingham; Janie E. Rose, Nashville
- Grandchildren – Margaret “Maggie” Ann Murr and Nolan Thomas Murr, Birmingham
- Methodist
- Hobbies – Fishing, Genealogy, Golf, and Travel

GARLAND P. ROSE, JR., P.E., D.WRE, F.ASCE
Vision Statement

The American Society of Civil Engineers (ASCE) is like a home to us. It nurtures us while we get our education. It provides us opportunities to work with people we like. It is a place where leaders grow.

While there is comfort in staying with those whom we have learned to trust and share our experiences, we are often encouraged to step out and work with people of different backgrounds where leading is done without structural power for a common good. When we return to our fellow engineers, we bring a broader vision of our talents and how we can contribute in our communities, our countries, and the world.

Nashville, Tennessee is only one example where civil engineering has flourished since the City's founding. It is a home to universities and diverse businesses which nurture engineers and give them opportunities to work and prosper. That prosperity has sometimes been challenged.

Today potential challenges loom for the city, its institutions, and businesses, including civil engineering. To whom do the citizens look for inspiration?

Nashville, Tennessee is a thriving city in large part because of an initiative launched a year ago by the Nashville Area Chamber of Commerce of which I am a member. The initiative was a brand promise to the Chamber membership and its stakeholders known as **Belong, Engage, Learn and Prosper**.

Like ASCE, the Chamber is a not-for-profit organization, where community volunteers from diverse backgrounds and interests work with dedicated staff. Together they continue to deliver on their mission of facilitating community leadership to create economic prosperity (added value) and providing Chamber members opportunities to belong, engage, lead, and prosper.

The Chamber's mission is almost identical to ASCE, whose mission is to provide essential value to our members. Relationships built with people, who are lead without structural power, are also common to both organizations. If we stay focused on our mission and build the relationships, we can not miss being successful.

Like an equation, **Belong, Engage, Lead and Prosper** must be viewed as a whole to work. It is about joining, collaborating, showing up, and making tough decisions. Planning is everything. Where are we? Where are we going? How do we get there? Are we on track? Sounds familiar, doesn't it!

We are part of the world in which we live. Is it bigger than a bread box for you? It should be and ASCE can help bring out the best in you. We are stronger together when we work together.

Finally, there are men, women, and children in the world who have no idea that their quality of life and prosperity are ensured by men and women who call themselves “Civil Engineers”. Keep up the good work!