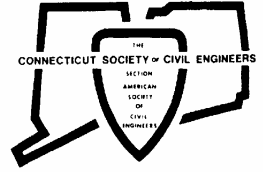


Since 1884

CSCE Newsletter

WWW.CSCE.ORG

Connecticut Society of Civil Engineers
American Society of Civil Engineers **February 2009 Edition**



Since 1884

CSCE MONTHLY DINNER MEETING – February 2009

Date: Monday, February 9, 2009

Speaker: **Fred Wajcs, PE, Senior Energy Engineer**
Conservation and Load Management at Northeast Utilities Service Company

What Engineers Need to Know about Energy Efficiency: Fred Wajcs, PE, Senior Energy Engineer Conservation and Load Management at Northeast Utilities Service Company will discuss the interplay between efficiency programs, codes & standards, technologies and professional practices. He'll review the various efficiency programs available and how recent and planned legislation, incentives and code changes will impact your practice.

1.0 Professional Development Hours will be awarded. Good for NY PDH requirements.

Location: Hawthorne Inn, 2321 Wilbur Cross Highway, Berlin, CT

Time: 5:00 - 6:30 PM - Cash Bar and Displays
6:30 - 9:00 PM - Dinner and Program

Cost: Members & Guests: \$45
Students: \$20
Corporate Sponsorships: \$200 (includes 1 dinner registration)

Dinner: Choice of Prime Rib, Baked Scrod or Vegetarian Lasagna

Reservations: Make check payable to: CSPE, 460 Smith St, Ste K, Middletown, CT 06457,
Phone (860) 635-5522, Fax (866) 668-9858,
Email: bdavidson@ctengineers.org

Directions: Directions at www.hawthorne-inn.com



President's Message

Happy Birthday! Connecticut Society of Civil Engineers turns 125 this year. Yes, CSCE has been around for 125 years. We have formed a committee to develop activities to celebrate CSCE and civil engineering. Please contact me if you have any ideas at president@csce.org. Look for more information to follow.

Our joint Dinner Meeting with the Fairfield branch was a success. I would like to thank Ron Hill for organizing the meeting and for Hazen and Sawyer for the presentation on the design, construction and start-up of the upgraded Stamford Water Treatment Plant. The next meeting is also a joint meeting with the other engineering societies for E-Week. The meeting is on February 9, 2009 at the Hawthorn Inn.

Remember the ACE Awards Program is to be held on Tuesday, May 12, 2009. The application has been released. Please see the website for more information and a copy of the application. The application is due by March 25, 2009. We hope you consider submitting a project.

This past week ASCE released the Report Card for America's Infrastructure. It gave the nation and overall grade of D. Please go to www.asce.org/reportcard/2009/index.html to review the report card. ASCE National thought it was important to provide Congress with the information necessary to evaluate the need for infrastructure spending, which is proposed to be included in the stimulus package. The full release of the report card is still slated for March 25, 2009.

ASCE dues were due on Dec. 31, 2008, which means if you haven't renewed your 2009 membership, you run the risk of losing your valuable ASCE benefits, such as membership in your local ASCE Section or Branch.

I look forward to seeing you at the February dinner meeting which will be held at the Hawthorn Inn. I encourage you to participate and attend this dinner. Remember to keep checking the CSCE website at www.csce.org as we continue to update the calendar and committee activities.

A handwritten signature in black ink, which reads "Christopher M. Holden". The signature is fluid and cursive, with a long horizontal stroke at the end.

Christopher M. Holden, P.E., M.ASCE
President

THE BRAIN TEASER CORNER

January 2009 Brain Teaser's Answer: Five. Each value appears on an even number of squares (8). Inside the chain the values match in pairs, therefore a 5 at one end of the chain must be matched by another 5 at the other end.

February 2009 Brain Teaser: The Number 1,313: Ask a friend to write down this easily remembered number, subtract any number from it, make a five- to seven-digit number with the difference on the left and 100 plus the number subtracted on the right. Now he crosses out any nonzero digit and calls out the resulting number.

You promptly name the crossed-out digit.

What property of 1,313 simplifies your work?

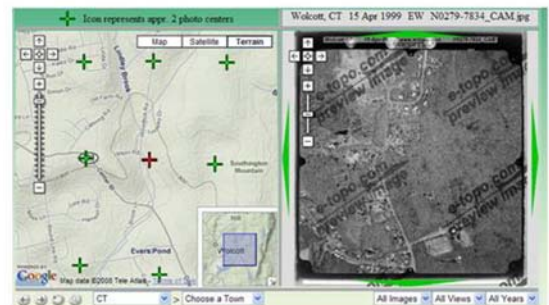
The solution will be shown in the next newsletter. Want to stump your colleagues? If so, submit your Brain Teaser (and solution) to the editor at NL-Editor@csce.org.

EASTERN TOPOGRAPHICS

FREE downloads of low altitude aerial images of CT, MA, ME, NH, NY, NJ and RI are available **ONLINE**.

We are **INFRASTRUCTURE MAPPING SPECIALISTS** and offer **CUSTOM SPEC FLIGHTS - NO COST, NO OBLIGATION***

*Visit www.e-topo.com to view images and submit RFP online.



Notices

The **Benjamin Wright Award** is CSCE's highest award, presented each year to a civil engineer practicing in Connecticut who has demonstrated outstanding practice his or her career, and made significant contributions to civil engineering. Please consider nominating a deserving colleague. Nominations are due by April 10, 2009. The Executive Board will vote to determine the award winner and make the presentation at our annual meeting in May. Candidates will be considered for several years following their nomination. Nominations should be directed to Randy States (rtstates@geodesign.net), Billy Cunningham (Director-II@csce.org), or Jay Silva (Director-I@csce.org).

DEPARTMENT OF ECONOMIC AND COMMUNITY DEVELOPMENT

The Department of Economic and Community Development is the state's lead agency for the development and implementation of policies, strategies and programs all of which are designed to enhance Connecticut's communities and business and housing environments. We employ a wide range of staff including development agents, engineers, architects, information technology, managers, and clericals. Our entry level job classes include Connecticut Careers Trainee, Assistant Economic and Community Development Agent, Engineer Intern and Civil Engineer 1. Two of these job classes require taking an experience and training exam. If interested in taking this exam, please visit the Department of Administrative Services website at www.das.state.ct.us. If interested in employment with DECD or you wish more information, please e-mail Human Resources Director Mitch Drabik at: mitch.drabik@ct.gov or call 860-270-8022 or 8024.

The Department of Economic and Community Development is an equal opportunity/affirmative action employer and strongly encourages the applications of women, minorities, and persons with disabilities.

WHITLOCK DALRYMPLE POSTON & ASSOCIATES, P.C.
CONSULTING ENGINEERS



Service areas include:

Structural Engineering	Corrosion Assessment
Nondestructive Testing	Repair and Rehabilitation Design
Forensic Investigations	Litigation Support

Keith Kesner, Ph.D., P.E.
Associate
kkesner@wdpa.com



50 WASHINGTON STREET SUITE 751 So. NORWALK, CT 06854
203-354-4503 TEL 203-354-4528 FAX www.wdpa.com
Manassas, Virginia Austin, Texas So. Norwalk, Connecticut




Geotechnical and Environmental Services

Peter M. Heynen, PE
Principal

380 Maple Avenue • Cheshire, CT 06410
Tel: (203) 439-0063 • Fax: (203) 439-7036
email: pheynen@heynenengineers.com

SIEFERT ASSOCIATES, LLC
CONSTRUCTION ENGINEERS

VINCENT A. SIEFERT, P.E.



180 Church Street, Suite 6
Naugatuck, CT 06770
203-723-1477
203-723-9346 fax
e-mail: vsiefert@snet.net

TEST BORINGS
CORE DRILLING



SOILS LABORATORY
MONITORING WELLS

SOILTESTING, INC.
SUB-SURFACE
SITE AND FOUNDATION INVESTIGATION
James DeAngelis, P.G., M.Sc. Engr'g. Geo

TEL: 203-888-4531
TEL: 1-800-388-4473
FAX: 203-888-6247

140 OXFORD ROAD
OXFORD, CONN. 06478

2009 CSCE MONTHLY MEETING CALENDAR

Please mark your calendars!

- Wednesday, March 18, 2009 at the University of New Haven
- Wednesday, April 15, 2009 at the United States Coast Guard Academy

ACE Awards Ceremony – Tuesday, May 12, 2009 at the Aqua Turf Club in Plantsville



Return Services Requested:

Michael Cook, ASCE *Geographic Services Manager*
1801 Alexander Bell Drive, Reston, VA 20191

Send other section correspondence to:

Secretary

Jason F. Waterbury, P.E.

19 Charles Mary Drive, Higganum, CT 06441
Phone: (860) 278-7850, Ext. 3380; Fax: (860) 525-5013
E-Mail: Secretary@csce.org

President

Christopher M. Holden, P.E.

Phone: (860) 343-8085 Ext. 155; Fax: (860) 343-8091
E-Mail: President@csce.org

President-Elect

Ronald J. Nault, P.E.

Phone: (203) 288-5188 Ext. 207, Fax: (203) 288-2583
E-Mail: President-Elect@csce.org

Vice President

Rabih M. Barakat, P.E.

Phone: (860) 594-3389, Fax: (860) 594-3373
E-Mail: Vicepresident@csce.org

Treasurer

Gregory K. Holness, P.E., Esq.

Phone: (860) 298-2000
E-Mail: Treasurer@csce.org

Newsletter Editor

Peter M. Heynen, P.E.

Phone: (203) 439-0063, Fax: (203) 439-7036
E-Mail: NL-Editor@csce.org

Director II

William J. Cunningham, P.E.

Phone: (203) 723-5830, Fax: (203) 723-9346
E-Mail: Director-II@csce.org

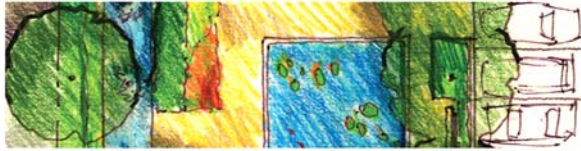
Director I

James L. Silva, P.E.

Phone: (860) 423-4506, Fax: (860) 423-1875
E-Mail: Director-I@csce.org

Bothwell Site Design LLC

Landscape Architecture and Site Planning



28 Knight Street
Norwalk, CT 06851
T 203.354.5700 • F 203.354.5699

www.bothwellsitedesign.com

**MALCOLM
PIRNIE**

INDEPENDENT ENVIRONMENTAL
ENGINEERS, SCIENTISTS
AND CONSULTANTS

www.pirnie.com

Thomas A. Loto, PE, BCEE
Project Manager

Malcolm Pirnie, Inc.
100 Roscommon Drive, Suite 100
Middletown, CT 06457

T: 860.613.7407
C: 860.830.1418
F: 860.632.0036
tloto@pirnie.com



**S
C
S**

STRUCTURAL CONSULTING SERVICES, P.C.

Structural Design for New
Buildings and Renovations
and Shoring, Sheeting and
Underpinning Designs for
the Construction Industry

James H. Fahey, P.E., S.E.
Andrew P. McConnell, P.E., S.E.
Alan M. Rosa, P.E.
Principals

67 Federal Road, Brookfield, CT 06804
Tel: 203.746.7578 Fax: 203.775.5678
info@sca-pc.com www.sca-pc.com



**G E O D E S I G N
I N C O R P O R A T E D**

RANDALL T. STATES, P.E.

GEOTECHNICAL ENGINEERS • ENVIRONMENTAL CONSULTANTS
984 SOUTHFORD ROAD • MIDDLEBURY CONNECTICUT 06762
TELEPHONE: (203)758-8836 FACSIMILE: (203)758-8842
WEB SITE: www.geodesign.net EMAIL: rtstates@geodesign.net

MORETRENCH

MORETRENCH.COM

GEOTECHNICAL SERVICES

Soil Nailing • Minipiles • Tieback Anchors • Grouting Systems
Earth Retention & Underpinning • Rock Protection

CONSTRUCTION SERVICES

Ground Freezing • Groundwater Treatment • Slurry Trenches
Construction Dewatering • Landfill Gas and Leachate Systems

16 COPICUT RD. (NEAR) ASSONET, MA 02702 / T: 508-644-9952 / F: 508-644-9965

Architecture • Engineering • Environmental
Land Surveying • Planning • Telecommunications
Traffic & Transportation • Construction Phase Services

URS

500 Enterprise Drive, Ste. 3B • Rocky Hill, Connecticut 06067

Tel: 860.529.8882 • Fax: 860.529.3991

www.urscorp.com

ANEOE/MF/VD

AI

Engineers, Inc.

919 Middle Street
Middletown, CT 06457
(860) 635-7740
(860) 635-7312 fax
www.aiengineers.com

Abul A. Islam, PE, FASCE
President/CEO

aislam@aiengineers.com

HELLER AND JOHNSEN

Consulting Geotechnical Engineers

Investigations • Design • Field Services

Foot of Broad Street T: (203)380-8188
Stratford, CT 06615 F: (203)380-8198

EMPLOYMENT OPPORTUNITIES

AI Engineers, Inc. (AI) is a dynamic 100-person engineering company with tremendous opportunities for technical professional development as well as learning and practicing state-of-the-art management skills. We are seeking articulate, high energy, committed individuals in civil/site, structural, bridge, transportation, M/E/P and sustainable design and construction from entry level to senior management positions. If you are looking for a well managed, transparent, incentive-based company culture where the sky is the limit for growth, please send your resume to hr@aiengineers.com or call (860) 635-7740.

Appledore Marine Engineering, Inc. – **Engineer Diver** (BSCE, 4 years experience and diving credentials, P.E. Preferred) and **Entry Level Engineer** (BSCE, EIT Preferred). Looking for motivated individuals to work on challenging marine/waterfront projects throughout the United States and abroad. Individuals should have an interest in structural engineering applications involving waterfront structures. Positions entail underwater inspection, evaluation and design of marine/waterfront structures and travel in a team-oriented environment. This is an excellent opportunity for individuals interested in working on a variety of waterfront/marine projects throughout the United States and abroad for a growing company. Send resume to Appledore Marine Engineering, Inc., 600 State Street, Suite E, Portsmouth, NH 03801 or email yswasey@appledoremachine.com.


CJOJ, LLC - *Civil Engineer, New Milford, CT.* CJOJ, LLC is a well-established Land Surveying and Engineering company that has been in business for over 70 years. Typical projects include site planning, subdivision design and commercial development. Requirements: CT Engineer License, strong communication skills, experience in grading, site design and Autocad. This position offers stability and challenge with competitive pay. Please email resume to cjo3@snet.net or contact C.J. at 860-354-5452

CME Associates, Inc. – *Highway and/or Traffic Engineer* - CME is a full-service architectural, engineering and environmental consulting firm with three offices in Connecticut. The firm is seeking a full-time Highway Traffic Engineer in its East Hartford location. The ideal candidate has a B.S. in Civil Engineering with a concentration in traffic and/or highway engineering preferred, with 3-6 years experience. Knowledge of CADD is required while experience in Microstation and In-Roads considered a plus. Check for more details on the website www.cmeengineering.com. Interested candidates should send a cover letter and resume to: Human Resources, CME Associates, Inc., 32 Crabtree Lane, Woodstock, CT 06281. CME is an Equal Opportunity Employer.

GeoDesign, Inc., a geotechnical, construction and environmental engineering firm, has several opportunities for *geotechnical engineers*, entry level and above. Masters degree, and E. I. T., or P. E. preferred. We offer competitive salary and benefits packages. Contact Randall T. States, P.E. (203) 758-8836, ext. 111, by fax: (203) 758 8842 or by Email: rtstates@geodesign.net GeoDesign is an Equal Opportunity Employer.


CONSULTING ENGINEERS
PURCELL
ASSOCIATES

**Engineering:
Designed to Create Value**



Civil & Site Structural Transportation

90 National Dr., Glastonbury, CT t: 860-633-8341 f: 860-633-1068
Boston, MA • www.purcellassociates.com

GNCB 

Gibble Norden Champion Brown
Consulting Engineers, Inc.

130 Elm Street
P. O. Box 802
Old Saybrook, CT 06475
Tel 860.388.1224
Fax 860.388.4613
info@gncbengineers.com
gncbengineers.com

- Structural Engineering
- Geotechnical
- Historic Preservation
- Construction Services
- Investigation
- Threshold Review

Diversified Technology Consultants one of CT's leading engineering firms has several positions available for our expanding North Haven and Norwich offices. DTC is an award winning, top 500 multidisciplined design firm. For over 29 years our firm has provided consulting services in planning, landscape architecture, MEP engineering and construction administration to municipal, state & federal agencies and private industry on a nationwide basis. To learn more about DTC visit our web site @ teamdtc.com

We are seeking several **Civil Engineers** w/2+ years experience. Emphasis on site plan development, stormwater management plans, specs., construction admin & cost estimates. Projects include large multidisciplinary institutional contracts to 70 million. Must be proficient in AutoCAD and LDD. Experience in Haestad StormCad and HEC-HMS a plus

We also have a need for a **Sr. Highway Engineer , PE** with 7-10 years experience in CT & Mass highway & bridge design. PE, Microstation & AutoCad req'd. Experience working with DOT and possessing good communication and project management skills desirable.

In addition, we have a new opportunity for a **Structural Engineer**. Must have strong knowledge of building codes, construction industry standards and a minimum of 3 years of design experience in steel, concrete & masonry structures. Experience in Ramframe software a must, RISA & Rivet a plus. Bachelor's degree in Civil/Structural Engineering required, PE preferred.

We offer an excellent benefits package that includes medical & dental, competitive salary, 401k program and a comfortable work environment. Please fax/email resume: 203-234-7376 hr@teamdtc.com.

McNary Bergeron & Associates specializes in design and construction engineering for all phases of complex bridge projects. We are growing and looking for structural engineers in our Connecticut and Colorado offices. Are you one of us? Please visit our website at www.mcnarybergeron.com. We accept resumes in confidence at bridges@mcnarybergeron.com.

Ocean and Coastal Consultants, Inc. currently has an opening in our Trumbull, CT office for an experienced **Geotechnical Engineer** for US and international waterfront and structural projects. The ideal candidate will have soil-structure interaction expertise, 5 to 10 years of design experience, a Professional Engineer license and an interest in international travel, through our parent company COWI A/S (www.cowi.com). A Masters degree with specialization in Geotechnical Engineering is preferred. Fieldwork will be required. Ocean and Coastal Consultants, Inc. is an "Affirmative Action/Equal Opportunity Employer".


Ocean and Coastal Consultants, Inc. (OCC) has an experienced team of professionals providing complete coastal and waterfront engineering solutions with a commitment to quality and attention to customer satisfaction. OCC, with offices in Connecticut, Massachusetts, and New Jersey, offers opportunities to work on challenging and diverse projects, a positive work environment, and competitive salaries and benefits. Our affiliation with COWI, an internationally acclaimed engineering firm, provides our employees with opportunities for career enhancement and a world class employment experience. You can visit our website www.ocean-coastal.com for more information and to apply on-line or email Joseph Marrone, P.E. at jmarrone@ocean-coastal.com.

Siefert Associates, LLC is seeking a motivated *Civil Construction Engineer - Structural Engineer* with field savvy and structural engineering experience, with geotechnical knowledge helpful. Our challenging projects include Bridges of all types, Railroads, Subways, Marine Facilities, Foundations, Utilities, Power plants, and more. Current sites include Triboro Bridge, Tappan Zee Bridge and World Trade Center Transportation Hub. We provide Working Drawings and Calculations, tailored to the preferred Means and Methods of Contractors for ongoing construction projects. BS and EIT Required, Current P.E. registration is preferred. This position comes with top pay, fringe benefits and future advancement potential. Contact Vincent Siefert P.E., 203-723-1477 www.siefertassociates.com.

Structural Consulting Services, P.C. – *Structural Engineer* - Structural Consulting Services, P.C. is a fast growing structural engineering firm located in Brookfield, CT. We specialize in new building construction & renovations and in shoring, sheeting & underpinning designs for the construction industry throughout the metro New York City area and New England. We have an immediate need for an experienced *Structural Engineer* with a minimum of 5 years U.S. design experience in building design and/or construction support designs. BSCE or MSCE required, PE preferred and proficiency with AutoCAD a plus. Candidate must have good communications skills, be highly motivated and a practical designer with the ability to handle multiple projects. We offer a competitive salary and benefits package including medical, dental, 401(k), paid holidays, vacation & personal/sick time, and paid professional license registrations & renewals. Please submit a cover letter & resume via mail, fax or email to: 67 Federal Road, Brookfield, CT 06804; (203) 740-7578 Phone; (203) 775-5670 Fax; info@scs-pc.com Email.

Wengell, McDonnell & Costello, Inc., located in Newington, CT, is currently seeking individuals for the following positions: *Structural Engineers, Hydraulic Engineers, CADD Operators/Civil Engineering Technicians, and Construction Inspectors*. For more information, please call us at (860) 667-9624 or visit our website at www.wmcengineers.com. EOE M/F

Zieman Engineering, LLC – *Structural Engineer/Construction Engineer* – Zieman Engineering is a structural engineering firm specializing in designing construction procedures, temporary structures and specialized equipment for contractors involved in major and complex construction projects throughout the northeast. Typical projects include significant bridge erection procedures, heavy lifting, rigging and jacking operations of all kinds, and temporary structures for rehabilitation projects. We seek a BSCE with minimum 5 years experience in either structural design or field engineering for a contractor. Must be a creative and practically oriented problem solver with an interest in structural design as well as construction field operations. Competitive salary and benefits. Flexible hours are possible if needed to ease commuting. For additional information, see www.ziemanengineering.com. Please email resume to tz@ziemanengineering.com.

 HALEY & ALDRICH	<i>15 Offices Nationwide</i>
UNDERGROUND ENGINEERING & ENVIRONMENTAL SOLUTIONS	800 Connecticut Boulevard Suite 100 East Hartford, CT 06108-7303 Tel.: 860.282.9400 Fax: 860.282.9500 info@HaleyAldrich.com www.HaleyAldrich.com

 THE DI SALVO ERICSON GROUP	Structural Engineers, Inc. 43 Coops Hill Road Ridgefield, CT 06877 203-438-9581 106g.com
	Celebrating 30 Years of Structural Engineering for the Construction Industry

2007-2008 CSCE EXECUTIVE BOARD

President - Christopher M. Holden, P.E.

162 Apple Tree Lane
Portland, CT 06480
860-343-8085, Ext. 155 Office
860-343-8091 Fax
860-883-4028 Cell
President@csce.org

President-Elect - Ronald J. Nault, P.E.

Luchs Consulting Engineers, LLC
DeCarlo & Doll Architects/Engineers
1952 Whitney Avenue
Hamden, CT 06517
203-288-5188, Ext. 207 Office
203-288-2583 Fax
President-Elect@csce.org

Vice President - Rabih M. Barakat, P.E.

Connecticut Department of Transportation
2800 Berlin Turnpike
Newington, CT 06131-7546
860-594-3389 Office
860-594-3373 Fax
203-397-2996 Home
Vice-President@csce.org

Treasurer - Gregory K. Holness, P.E., Esq.

Permasteelisa North America Corp.
123 Day Hill Road
Windsor, CT 06095
860-298-2000 Office
Treasurer@csce.org

Secretary - Jason F. Waterbury, P.E.

Clean Water Project
The Metropolitan District
555 Main Street, P.O. Box 800
Hartford, CT 06142-0800
860-278-7850 Ext. 3380 Office
860-525-5013 Fax
Secretary@csce.org

Newsletter Editor - Peter M. Heynen, P.E.

Heynen Engineers
380 Maple Avenue
Cheshire, CT 06410
203-439-0063 Office
203-439-7036 Fax
203-645-3287 Cell
NL-Editor@csce.org

Director II - William J. Cunningham, P.E.

Siefert Associates, LLC
180 Church St., Suite 6
Naugatuck, CT 06770
203-723-5830 Office
203-723-9346 Fax
860-582-7893 Home
Director-II@csce.org

Director I - James L. Silva, P.E.

Silva Engineering, LLC
Windham Mills Technology Center
322 Main St., Bldg. 2, 2nd Floor East
Willimantic, CT 06226
860-423-4506 Office
860-423-1875 Fax
860-429-4370 Home
Director-I@csce.org

Director, ASCE District 2, ASCE Region 1

Governor - Paul D. Moyer, P.E.
Carter::Burgess, Architects, Engineers, and Planners
465 Medford Street, Suite 300
Charlestown, MA 02129
857-588-5500 Office
617-225-0216 Fax
617-438-3568 Cell
Paul.Moyer@c-b.com

TECHNICAL GROUP CHAIRS

Construction - William J. Cunningham, P.E.

Siefert Associates, LLC
180 Church St., Suite 6
Naugatuck, CT 06770
203-723-5830 Office
203-723-9346 Fax
860-582-7893 Home
Director-II@csce.org

Geotechnical - Gary J. Fuerstenberg, P.E.

GEI Consultants
455 Winding Brook Drive
Glastonbury, CT 06033
860-368-5300 Office
860-368-5307 Fax
gfuerstenberg@GEIconsultants.com

Structures - Bryan Busch, P.E.

CME Associates, Inc.
333 East River Drive, Suite 400
East Hartford, CT 06108
860-290-4100 ext. 11 Office
860-290-4114 Fax
bbusch@cmengineering.com

COMMITTEE CHAIRS

Programs - Jeff Benoit, P.E.

Connecticut Department of Transportation
40 Taft Pond Road
Pomfret Center, CT 06259
860-974-2572 Home
jeffbenoit@earthlink.net

Legislative Affairs - Roy Merritt, P.E.

HNTB Corporation
1880 Silas Deane Highway
Rocky Hill, CT 06067
860-257-7377, Ext. 23 Office
860-670-7540 Cell
860-257-7394 Fax
rmerritt@hntb.com

Continuing Education - Ronald J. Nault, P.E.

Luchs Consulting Engineers, LLC
DeCarlo & Doll Architects/Engineers
1952 Whitney Avenue
Hamden, CT 06517
203-288-5188 Ext. 207 Office
203-288-2583 Fax
President-Elect@csce.org

Scholarship Fund - Jim Sime, P.E.

Connecticut Department of Transportation
280 West Street
Rocky Hill, CT 06067
860-258-0309 Office / 860-569-4186 Home
860-258-0399 Fax
james.sime@skiltons.org

Membership - Jason F. Waterbury, P.E.

Clean Water Project/The Metropolitan District
555 Main Street, P.O. Box 800
Hartford, CT 06142-0800
860-278-7850 Ext. 3380 Office
860-525-5013 Fax
Secretary@csce.org

Water Resources - Thomas A. Loto, P.E., BCEE

Malcolm Pirnie, Inc.
100 Roscommon Drive, Suite 100
Middletown, CT 06457
860-613-7407 Office
860-860-632-0036 Fax
860-830-1418 Cell
tloto@pirnie.com

Government Engineers - Rabih M. Barakat, P.E.

Connecticut Department of Transportation
2800 Berlin Turnpike
Newington, CT 06131-7546
860-594-3389 Office
860-594-3373 Fax
203-397-2996 Home
Vice-President@csce.org

Younger Members - Sara Ramsbottom, P.E.

Connecticut Department of Public Health
410 Capitol Avenue, MS# 51 WAT
P.O. Box 340308
Hartford, CT 06134-0308
860-509-7333 Office
sara.ramsbottom@ct.gov

Career Guidance - Kiran Majmudar, P.E.

L.P. Consultants
252 Hazard Avenue
Enfield, CT 06082-4613
860-749-0733 Office/Fax
LPConsultants@snet.net

Web Site - Peter M. Heynen, P.E.

Heynen Engineers
380 Maple Avenue
Cheshire, CT 06410
203-439-0063 Office
203-439-7036 Fax
203-645-3287 Cell
pheynen@heynenengineers.com

History & Heritage - Randall T. States, P.E.

GeoDesign, Inc.
984 Southford Road
Middlebury, CT 06762
203-758-8836 Ext. 111 Office
203-758-8842 Fax
203-530-5423 Cell
rtstates@geodesign.net

FACULTY ADVISORS

Central Connecticut State University

Clifford Anderson, Ph.D., D.WRE

Assistant Professor
Department of Engineering
Copernicus Hall Room 21207
1615 Stanley Street
New Britain, CT 06050-1040
860-832-1849 Office
andersonc@ccsu.edu

Three Rivers Community-Technical College

Diba Khan-Bureau

Professor & Program Coordinator
Environmental & Civil Engineering Technology Programs
574 New London Turnpike
Norwich, CT 06360
860-885-2383 Office
860-886-4960 Fax
dkhan-bureau@trcc.comnet.edu

University of Connecticut

Richard Christenson, Ph.D.

Assistant Professor
Department of Civil and Environmental Engineering
University of Connecticut
261 Glenbrook Rd., UNIT-2037
Storrs, CT 06269
860-486-2270 Office
860-486-2298 Fax
Richard@enr.uconn.edu

University of New Haven

Jean Nocito-Gobel, Ph.D.

Department of Civil & Environmental Engineering
300 Boston Post Road
West Haven, CT 06516
203-932-7155 Office
203-932-7158 Fax
jnocitogobel@newhaven.edu

United States Coast Guard Academy

Hudson Jackson, Ph.D., P.E.

Engineering Department
15 Mohegan Avenue
New London, CT 06320-8103
860-444-8315 Office
860-444-8546 Fax
Hudson.V.Jackson@uscga.edu

University of Hartford

David Pines, Ph.D.

Chair and Associate Professor
Department of Civil, Environmental &
Biomedical Engineering
200 Bloomfield Avenue
West Hartford, CT 06117
860-768-4560 Office
860-768-5073 Fax
pines@hartford.edu

FAIRFIELD BRANCH

President - Ron Hill

15 East Ridge Road
Ridgefield, CT 06877
203-788-8021 Cell
203-431-0442 Home
RonaldPHill@comcast.net

2008-2009 CSCE NEWSLETTER ADVERTISING RATES

Options

- A. Business Card (reduced to approx. 1 1/2" X 2 5/8")
- B. One-Quarter Page
- C. One half 8-1/2 x 11 in. Advertisement
- D. One full 8-1/2 x 11 in. Advertisement
- E. Employment Classified Ad: In-State Position
- F. Employment Classified Ad: Out-of-State Position

Prices

- \$400 min 6 issues
\$90 per issue
- \$750 min 6 issues
\$175 per issue
- \$325 per issue
- \$550 per issue
- \$15 / line / issue
- \$20 / line / issue

Employment Classified Ads of five (5) lines or less (subject to editing) for in-state positions are published free of charge as a professional courtesy to our membership. We anticipate publishing at least eight issues per year. There are approximately 1500 subscribers to the CSCE Newsletter.



**ENGINEERS
WEEK® 2009**

2009 Connecticut Engineers Week Joint Dinner

Monday, February 9, 2009
Hawthorne Inn, 2321 Wilbur Cross Highway, Berlin, CT
Directions at www.hawthorne-inn.com

Sponsored by
American Council of Engineering Companies of CT
Connecticut Society of Civil Engineers
Connecticut Society of Professional Engineers

Association for Facilities Engineers, CT Chapters
IEEE, CT Section
Institute of Transportation Engineers, CT Chapter
Women's Transportation Seminar

Dinner Program

- 5:00 - 6:30 PM - Cash Bar and Displays.
- 6:30 - 9:00 PM - Dinner and Program:

What Engineers Need to Know about Energy Efficiency: Fred Wajcs, PE, Senior Energy Engineer Conservation and Load Management at Northeast Utilities Service Company will discuss the interplay between efficiency programs, codes & standards, technologies and professional practices. He'll review the various efficiency programs available and how recent and planned legislation, incentives and code changes will impact your practice.

1.0 Professional Development Hours will be awarded. Good for NY PDH requirements.

Registration Fee:

Members & Guests: \$45

Students: \$20

Corporate Sponsorships: \$200 (includes 1 dinner registration)

Registration

Names: _____
Organization: _____
Address: _____
City, State, Zip: _____
Work Phone: _____
Email: _____

Member: ACEC/CT AFE CSCE CSPE
 IEEE ITE WTS Student Other

Amount Enclosed: \$ _____

Dinner Selection:

Prime Rib Baked Scrod Vegetarian Lasagna

Make check payable to: CSPE, 460 Smith St, Ste K, Middletown, CT 06457, Phone (860) 635-5522,
Fax (866) 668-9858,

Email: bdavidson@ctengineers.org