



# *Connecticut Society of Civil Engineers*

[www.csce.org](http://www.csce.org)

Section of the American Society of Civil Engineers

## **125th Anniversary of CSCE**

**May/June 2010 Newsletter**

*In this issue:*

**President's Message**

***ACE Award Winners***

**Golf Tournament – July 23<sup>rd</sup>**

**Fairfield County Branch Summer Social – July 27th**

**Employment Opportunities**

## *President's Message*

Dear CSCE Members,

First, I would like to take this opportunity to thank you all for the privilege of serving as your President. I am looking forward to another productive year for our society on the heels of great year led by our now Director Ron Nault.

Second, I sincerely congratulate all the ACE award winners and applicants and thank them for a wonderful turn out and celebration of your great work, on Tuesday May 11, 2010 at the Aqua Turf. The feedback The Executive Board received from those who attended including ASCE's National delegation was overwhelmingly positive. This event has grown over the past three years and we look forward to making it bigger and better every year.

As we get ready to fire up our grills this Memorial Day weekend and kick off another summer season, your CSCE Executive Board will start planning the upcoming year. We will meet sometime in June to discuss setting up the 2010-2011 meeting schedule, locations, topics of discussions, continuing education seminars, goals and objectives. We welcome all current and new members to chime in with thoughts, ideas, comments or recommendations. This is your society and we exist to represent you.

As mentioned in my induction speech, two topics I would like to bring up for discussion are continuous education and volunteerism. The first, continuous education starts with you. What topics are you interested in learning more about or would you like to see the society offer? All suggestions can be emailed to me at [president@csce.org](mailto:president@csce.org) or any of the other Board members.

The second is volunteerism. A few years ago CSCE partnered up with "Habitat for Humanity" to lend our expertise and skills towards home renovations in the north end of Hartford. Perhaps this partnership can be re-kindled again or we may start new ones with others. Again, your thoughts and suggestions may be sent to the email above.

Lastly, don't forget to join us and sign up your foursome for **CSCE's Annual Golf Tournament on July 23, 2010**. It's 12:00 Shotgun Start at the Tradition Golf Course in Wallingford, CT. Please see the flyer in this newsletter for more information and contact CSCE Newsletter Editor Sara Ramsbottom ([nl-editor@csce.org](mailto:nl-editor@csce.org)) if you have any questions. Also, on **September 17, 2010, The 13th Annual Geotechnical Seminar** will take place in Berlin, CT. This year's topic is Earth Slope Engineering. The seminar will be co-sponsored by the CSCE Geotechnical Group and the Deep Foundations Institute (DFI) and will be held at the Hawthorne Inn. Beginning in August, you may visit [www.CSCE.org](http://www.CSCE.org) for more information about this seminar.

In closing, I often like to incorporate a quote, engineering or otherwise, in any presentation, speech or a message such as this. So, I will close this message with a quote by Winston Churchill, the former Prime Minister of the United Kingdom. "*We shape our buildings, thereafter they shape us*".

I look forward to seeing and meeting many of you in the upcoming year and have a great summer.

Sincerely,

Rabih "Rob" Barakat, PE, MBA, M. ASCE  
President

## 2010 – 2011 CSCE Executive Board

At the ACE Awards dinner, the following individuals were sworn in as the CSCE Executive Board for the coming year:

President:	Rabih Barakat	President-Elect:	Jason Waterbury
Vice-President:	William Cunningham	Treasurer:	Robert Gomez
Secretary:	Gregory Holness	Newsletter Editor:	Sara Ramsbottom
Director I:	Ronald Nault	Director II:	Christopher Holden

### Fairfield County Branch of CSCE

Invites you to their

#### *Fifteenth Annual Brewhouse Summer Social*

**Tuesday, July 27<sup>th</sup>, 6:00 p.m. – 8:00 p.m.**

at The Brewhouse Restaurant in South Norwalk  
13 Marshall Street, South Norwalk, CT 06854

Price: \$30 includes beer, wine, and light hors d'oeuvres

**R.S.V.P. to Amy Petrone, CSCE Administrative Assistant  
by Noon on Friday, July 23<sup>rd</sup>**

**Email: [admin@csce.org](mailto:admin@csce.org)**

**Phone: 860-526-5935**

**Fax: 203-431-4583**

## *Upcoming CSCE Events*

### **July 2010**

Friday, July 23, 2010 – Annual Golf Tournament @ The Tradition, Wallingford, CT

Tuesday, July 27, 2010 – Fairfield County Branch Summer Social – The Brewhouse, Norwalk, CT

### **August 2010**

The Younger Member Group is planning an outing to see a Bridgeport Bluefish game. Look for more information soon.

### **September 2010**

September 17, 2010 – 13<sup>th</sup> Annual Geotechnical Seminar

Co-sponsored by CSCE Geotechnical Group and the Deep Foundations Institute (DFI)

Topic: Earth Slope Foundations; Visit [www.csce.org](http://www.csce.org) for additional information beginning in August

## *ACSE National Conferences*

2010 Missouri River – Texoma Regional & Midwest Levee Conference – July 12-15, 2010, St. Louis, MO

Visit <http://www.meetmeinstlouis2010.com> for more information.

Engineering Mechanics Institute 2010 Conference – August 8-11, 2010, Los Angeles, CA (@ USC)

Visit <http://viterbi.usc.edu/admission/professionalprograms/emi2010/> for more information.

2010 Watershed Management Conference – August 23-27, 2010, Madison, WI

Visit <http://content.asce.org/conferences/watershedmanagement2010/index.html> for more information.

ASCE Pipelines 2010 Conference – August 28 – September 1, 2010, Keystone, CO

Visit <http://content.asce.org/conferences/pipelines2010/index.html> for more information.

140<sup>th</sup> Annual Civil Engineering Conference – October 21-23, 2010, Las Vegas, NV

Visit <http://content.asce.org/conferences/annual2010/index.html> for more information.

1st T&DI Green Streets & Highways Conference – November 14-17, 2010, Denver, Colorado

Visit <http://content.asce.org/conferences/greenstreets-highways2010/index.html> for more information.

For a complete listing of all ASCE conferences, please visit: <http://asce.org/conferences>

## *Other Events*

If you have or know of an event that you would like to include in the newsletter, please send an email to [NL-editor@csce.org](mailto:NL-editor@csce.org).

## Region 1 News

What's going on in Region 1? Find out at <http://region1.asce.org>! New announcements have recently been added. Also check the site for events happening at other nearby ASCE sections and branches.

Information on ASCE Spring/Summer 2010 Continuing Education Seminars and Computer Workshops in Region 1 has recently been posted to the website. The list of upcoming seminars and workshops appears below. For more information about each topic, click on the corresponding link.

<b>SEMINARS AND COMPUTER WORKSHOP LINKS</b>	<b>TECHNICAL DIVISION</b>	<b>Dates</b>	<b>CITY/STATE</b>
<a href="#">Aluminum Structural Design with the 2010 Aluminum Design Manual- New!</a>	Structural	July 15-16, 2010	Rochester, NY
<a href="#">Financial Management for the Professional Engineer</a>	Management and Leadership	July 15-16, 2010	Burlington, VT
<a href="#">Design of Foundations for Dynamic Loads</a>	Structural	August 4-6, 2010	NYC Metro Area
<a href="#">Streambank Stabilization for Restoration and Flood Control</a>	Hydraulics & Water Resources	August 11-13, 2010	Buffalo, NY
<a href="#">Construction Administration for Engineers</a>	Construction/Development	August 12-13, 2010	Boston, MA
<a href="#">Design and Renovation of Wood Structures</a>	Structural	August 12-13, 2010	Portland, ME
<a href="#">Techniques for Pavement Rehabilitation</a>	Transportation/Highways	September 8-10, 2010	Boston, MA
<a href="#">Design and Strengthening of Shallow Foundations for Conventional and Pre-Engineered Buildings</a>	Structural	September 16-17, 2010	Boston, MA
<a href="#">Progressive Collapse Mitigation: Practical Analysis Methods and Proven Solutions</a>	Structural	September 16-17, 2010	New York City, NY
<a href="#">Design of Buildings in Coastal Regions- Newly Updated!</a>	Structural	September 23-24, 2010	NYC Metro Area
<a href="#">Project Management</a>	Management and Leadership	September 23-24, 2010	Boston, MA
<a href="#">Pumping Systems Design for Civil Engineers</a>	Hydraulics & Water Resources	September 23-24, 2010	NYC Metro Area
<a href="#">Seismic Loads for Buildings and Other Structures</a>	Structural	September 23-24, 2010	New York City, NY

# *Achievement in Civil Engineering - ACE Awards Dinner*

The 3<sup>rd</sup> annual ACE Awards dinner, held on May 11, 2010, was another great success, with approximately 170 people in attendance. Several awards were presented, including the Benjamin Wright Award, President's Award, and the ACE Awards. In addition, 16 CSCE members were recognized for achieving ASCE Life Member status. A summary of the award winners follows on the next few pages.

CSCE would like to thank all those who attended, and in particular Dr. Mel Goldstein of Storm Team 8 (WTNH) for emceeding the event. It was a memorable night for all!

## **CSCE 2010 Life Members**

Life Member status is an honor awarded to members who have made a lifetime commitment to ASCE and the civil engineering profession by remaining members for the full length of their professional careers. CSCE is honored to recognize the following members who have achieved Life Member status in 2010:

Warren K. Baethge  
Ramkumar Beniwal  
Edmund L. Bolan  
John P. Dugan

David S. Chase  
Raymond M. Farina  
D. Geoffrey Fitton  
Peter M. Heynan

David W. Jacobs  
James B. Learned  
Gregory J. Oberst  
Ronald J. Ochman

Kenneth M. Quimby  
Gary D. Smith  
Robert A. Ward  
Alan R. Wengell

## **President's Award**

This award is given to an individual selected by the outgoing president who has contributed to the advancement of the Section through his or her efforts over the preceding year. CSCE extends its deep gratitude to this year's award recipient for his countless contributions to CSCE during the past year. He was integral in planning, establishing and overseeing the presentation of numerous, successful geotechnical seminars enabling CSCE to offer excellent Continuing education opportunities to its members. He has worked tirelessly to make CSCE a more visible and vibrant organization including attracting over 100 people to the April Dinner Meeting focusing on Geotechnical issues. CSCE is please to present this year's President's Award to Gary Fuerstenburg.

## Benjamin Wright Award

The **Benjamin Wright Award** is CSCE's highest award, presented each year to a civil engineer practicing in Connecticut who has demonstrated outstanding practice throughout his or her career, and made significant contributions to civil engineering. CSCE is proud to present the 2010 Benjamin Wright Award to Clarence Welti.

Clarence W. Welti, Ph.D., P.E., has been a registered professional engineer since 1950 and has been in private practice for more than 55 years. Dr. Welti graduated from Rockville High School in Vernon, Connecticut and continued his education through the Army Specialized Training Program at Kalamazoo College in Michigan (candidates for this program were selected for their high intelligence and previous educational experience). Dr. Welti went on to complete his Bachelor of Science in Engineering with High Distinction at the University of Connecticut and then worked for the Connecticut Highway Department for several years. He continued his education with graduate level studies at the Federal Institute of Technology in Zurich, Switzerland and he earned his Ph.D. in Civil and Structural Engineering at the University of Connecticut. Many of Dr. Welti's notable projects are found throughout New England. A listing of his projects and accomplishments would fill several pages. The following lists a small sample of the many projects from his remarkable career:

- Geotechnical engineering for three sections of Connecticut Turnpike and Route 3 on soft clays
- Geotechnical Design for Catenary Foundations along railroads in Fairfield County
- Geotechnical Engineer of the Mashantucket Pequot Casino and the Mohegan Tribe Casino
- 35-foot high retaining wall supported in caissons for the Hartford Insurance Company
- Geotechnical Engineer for I-91 in Windsor, CT
- Raft Slab design under the 12-story St. Francis Hospital in Hartford, CT
- Pier 15 at the Submarine Base in Groton, CT

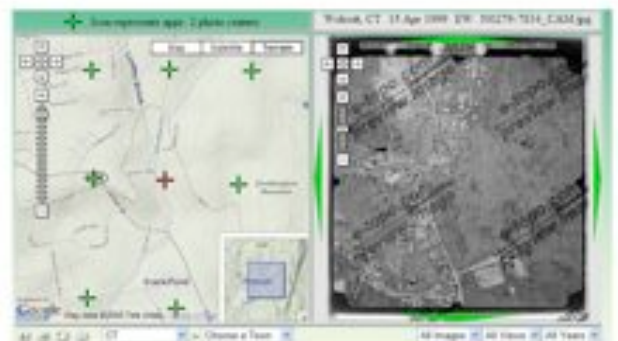
We recognize Dr. Welti's encyclopedic knowledge and understanding of subsurface conditions throughout the state of Connecticut. We also recognize his keen insight, experience, wisdom, and practical application of geotechnical engineering to complex projects. Dr. Welti is highly recognized and respected throughout the geotechnical community. His humility and wisdom carry deep respect from his peers and colleagues. Dr. Welti's career, accomplishments and contributions are truly recognized through the Benjamin Wright Award.

### EASTERN TOPOGRAPHICS

Our extensive library includes over 150,000 **LOW ALTITUDE IMAGES**, allowing us to provide detailed, engineering level mapping year round.

We offer a **LOW PRICE GUARANTEE** with every project—visit our website [www.e-topo.com](http://www.e-topo.com) for details.

**FREE** downloads of low altitude aerial images of CT, MA, ME, NH, NY, NJ and RI are available **ONLINE**.



The ACE Awards commend projects on which significant engineering expertise or innovation were exhibited. The project categories include: Water Resources/Environmental; Transportation; Geotechnical; Structural; and Construction.



And the winners are...

### Water Resources:

Project: Olmstead Pond Modifications  
 Owner: City of Norwalk (DPW)  
 Applicant: Tighe & Bond, Inc.  
 Contractor: A.J. Penna & Son

### Transportation:

Project: Route 2 Corridor Improvements  
 Owner: Connecticut Department of Transportation (Mashantucket Pequot Tribal Nation)  
 Applicant: Purcell Associates  
 Contractor: Cadri Corporation

### Construction:

Project: Replacement of Amtrak Movable Span – Thames River  
 Owner: Amtrak  
 Applicant: URS Corporation  
 Additional Engineering by: HNTB Corporation  
 Contractor: Cianbro Corporation

### Geotechnical:

Project: I-95 New Haven Harbor Crossing Corridor Improvement Program  
 Owner: Connecticut Department of Transportation  
 Applicant: GeoDesign, Inc.  
 Additional Engineering by: URS Corporation & Parsons Brinkerhoff  
 Contractor: Cianbro/Middlesex Joint Venture

## Structural:

Project: Katherine Hepburn Cultural Arts Center (The Kate)  
Owner: Town of Old Saybrook  
Applicant: GNCB Consulting Engineers, Inc.  
Additional services by: East Wharf Architects  
Contractor: Rudolph Netsch Construction Company

**Thank you to all those that submitted ACE Award applications. We look forward to seeing many new and exciting projects at next year's awards ceremony.**



**SOILTESTING, INC.**  
140 Oxford Road  
Oxford, CT 06478  
203-888-4531  
White Plains, NY • 914-946-4850  
Since 1958


---

**GEOTECHNICAL INVESTIGATIONS**  
Test Borings  
Rock Coring  
Monitor Wells

**PILES / ANCHORS**  
Helical Piles & Tiebacks  
Micro Piles  
Tiedown Anchors

**UNDERPINNING**  
*Stop / Reverse Foundation Settlement*  
Resistance Piers –  
35 to 50 kip Capacity  
Helical Piles

**www.soiltestinginc.net**  
**1-800-388-4473**



**GEODESIGN  
INCORPORATED**

---

Geotechnical | Construction | Environmental  
Engineers and Scientists

---

Subsurface Explorations  
Deep Foundations  
Geotechnical Special Inspections  
Geotechnical Instrumentation  
Demolition & Erection Plans  
Sheeting/Shoring Design  
Underpinning  
Vibration Monitoring  
Site Assessments  
Remediation  
Contaminated Soils Management  
Permitting

---

984 Southford Rd.                      246 W. 38th St.  
Middlebury, CT 06762                      New York, NY 10018  
(203) 758-8836                      (212) 221-6651

**www.geodesign.net**



**15<sup>th</sup> Annual CSCE Golf Tournament**  
**Friday, July 23, 2010 at 12 Noon**



*The Tradition Golf Club, 37 Herrington Road, Wallingford, CT*

CSCE cordially invites you to the 15<sup>th</sup> Annual CSCE Golf Tournament to benefit the CSCE Scholarship Fund. Cost of \$95 per person includes greens fees for 18 holes, golf cart, prizes, pre-game lunch, food and drink specials during play, and dinner after the round.

Enter alone, with a partner, or make your own foursome! \$95 Per Person (CSCE membership is not required)

The tournament is limited to 36 foursomes – so save your spot now!



**BATTLE IS HELD AND PRIZES AWARDED AT THE POST-TOURNAMENT DINNER**

**ADVERTISE TO CLIENTS**  
**– SPONSOR A HOLE!**

**\$125 FEE**

**RSVP to Amy Petrone**

[apetron@csce.org](mailto:apetron@csce.org)

OR  
 (860) 124-1811

No Later Than July 8<sup>th</sup>

Prizes will be awarded for:

- Lowest Scoring Team
- Longest Drive (Men & Women)
- Closest to the Pin
- and MORE!

Plus a \$500 on a Par 3 if you make the green in 1 shot!

-This event is Co-Sponsored by the CSCE Younger Members Committee-

## ASCE monitors the Gulf oil spill disaster

The Society and its members, the nation's civil engineers, have been watching the unprecedented oil spill disaster in the Gulf of Mexico with grave concern. Decades of major disasters have taught civil engineers of the value of understanding risk and the consequences of not being prepared. ASCE's guidance has helped civil engineers make responsible risk management a top priority of any project. [See this special page](#) for references you can apply to your work, a forum to share your insights on the oil spill, and how you can volunteer to help in the Gulf region.

## Share examples of failing infrastructure for a new TV series

The producers of a new series for The History Channel are looking for examples of visibly failing infrastructure. The projects they are interested in are of large, medium and small scale. They are primarily looking in the New York, Baltimore, Washington, D.C., Pittsburgh, Boston, Chicago, Twin Cities, St. Louis, Dallas, Austin, New Orleans, Portland, Seattle, San Francisco, and Sacramento metropolitan areas. If you know of interesting projects in any of these areas, please send us an e-mail at [media@asce.org](mailto:media@asce.org), and we will pass them along to the producers.

**Unemployed?** ASCE National has a program to waive dues of unemployed members. For more information, please contact Patrick Ballou directly at the following address:

Patrick Ballou, Membership Coordinator  
 American Society of Civil Engineers  
 1801 Alexander Bell Drive  
 Reston, VA 20191-4400  
 Toll free: 1-800-548-ASCE  
 Direct: 703-295-6169  
 Fax: 703-295-6335

---

## EMPLOYMENT OPPORTUNITIES

**Town Engineer:** The Town of East Hampton is seeking an energetic, talented, professional engineer. The Town Engineer reviews, evaluates, supervises, inspects and performs design and layout of construction projects including, but not limited to roads, storm drainage, bridges and facilities, as well as provides technical consultation to Town Boards and Commissions regarding same. Thorough knowledge of the methods, materials and equipment used in the construction and maintenance of municipal facilities and systems, as well as laws and regulations governing municipal development and construction necessary. Four-year civil engineering degree from an accredited college or university required. \$70-75K plus benefit package. Send resume to: Town of East Hampton, Department of Human Resources, 20 East High Street, East Hampton, CT 06424, by noon on Friday, July 2, 2010. A full job description may be viewed at [www.easthamptonct.gov](http://www.easthamptonct.gov). AA/.M-F/EOE

**GHD: Infrastructure Engineer - Middletown, CT Office:** This position will assist with the preparation of investigations, designs and project development of wastewater / water and infrastructure projects.

**Requirements for position:** Bachelor's degree in Civil Engineering; 3-5 years related experience; Prior consulting experience working with municipal clients on wastewater treatment and infrastructure projects; Pipeline experience; Must be a team player; Strong interpersonal and communication skills; Some travel may be required.

We reward your commitment with an attractive salary and full roster of competitive benefits. If you'd like to be considered, please submit your résumé and salary requirements along with the office location you are applying for, in confidence, via [www.ghd.com/careers](http://www.ghd.com/careers).

**The Connecticut Department of Transportation** has posted an examination open to the public for a **Transportation Planner 2**. In order to apply for a job with this title, an individual must have taken and passed this exam. Visit the Department of Administrative Services (DAS) website at [www.das.state.ct.us](http://www.das.state.ct.us) and click on "Jobs", then "State Employment Examinations" for information. The closing date for this exam is July 6, 2010.

**Construction Engineer – Geotechnical and Structural Fields:** Siefert Associates, LLC, a Civil-Structural Engineering Firm involved in Bridge Design and the Construction Industry is seeking a self-motivated Civil Engineer with PE Certification and field experience to join it's team in Central CT. Projects are diverse and challenging in NY, CT, NJ, MA and RI. See website for more info: [www.siefertassociates.com](http://www.siefertassociates.com)

**The Connecticut Department of Public Health (DPH)** has posted a continuous recruitment **Sanitary Engineer I** examination open to the public. In order to apply for a job with this title, an individual must have taken and passed this exam. Visit the Department of Administrative Services (DAS) website at [www.das.state.ct.us](http://www.das.state.ct.us) and click on "Jobs", then "State Employment Examinations" for information.

**Professional Civil Engineer:** CME Associates, Inc. is seeking a full-time Civil Engineer to work in our East Hartford office. The ideal candidate possesses a CT PE License with a minimum of 7 years experience in highway/transportation design and is familiar with CT DOT policies and procedures. Proficiency in Microstation is required while experience with In-Roads is considered a plus. Interested candidates should send a cover letter, resume, and three references to: CME Associates, Inc., Attn: Human Resources, PO Box 849, Woodstock, CT 06281. CME is an Equal Opportunity Employer.

**Structural Engineer** needed for reinforced concrete building foundations and concrete high rise designs. Please send resume to [jrogers@pustola.com](mailto:jrogers@pustola.com).

**See also ASCE Career Connections:** <http://careers.asce.org/search.cfm>

## Younger Member Employer Recognition Award

The Committee on Younger Members (CYM) is seeking nominations for the 2010 Younger Member Recognition Award. The Employer Recognition Award was created to recognize employers who support young engineers and assist with their personal development. CYM also awards two Superior Employer Recognition Awards (one public, one private) to the nominees who best display exemplary support of young engineers in their organizations. A list of winning organizations will be submitted for publication in ASCE News and included in the Younger Member Newsletter.

Thank you for your continuing support. If you have any questions or comments, please feel free to contact [douglas.d.knapp@usace.army.mil](mailto:douglas.d.knapp@usace.army.mil).

Douglas D. Knapp, P.E., M.ASCE  
Chair, ASCE Committee on Younger Members

More information and the nomination form were included in the April 2010 Newsletter. The deadline for submittal is August 1, 2010.

## ASCE letter to White House offers oil spill help Society backs effort to reform key design requirements

In a letter sent June 22 to President Obama, the Society said it "stands ready to assist the government" with engineering experts, including those in the Coasts, Ports, Oceans and Rivers Institute, in finding solutions to the Deepwater Horizon spill and to effective cleanup of affected shorelines. The members of COPRI offer "scientific and engineering knowledge in the sustainable development and protection of our coasts, ocean waters, ports, waterways, and wetlands," wrote ASCE 2010 President Blaine D. Leonard, P.E., D.GE, F.ASCE, on behalf of the Society. The letter also endorsed the administration's efforts to reform key design requirements



**SIEFERT ASSOCIATES, LLC**  
**CONSTRUCTION ENGINEERS**

VINCENT A. SIEFERT, P.E.

180 Church Street, Suite 6  
Naugatuck, CT 06770  
203-723-1477  
203-723-9346 fax  
e-mail: vsiefert@siefert.com

**H**ELLER AND **J**OHNSEN

Consulting Geotechnical Engineers

Investigations • Design • Field Services

Foot of Broad Street T: (203)380-8188  
Stratford, CT 06615 F: (203)380-8198

## You can help the History and Heritage Committee

The committee seeks brief descriptions of notable civil engineering works throughout Connecticut. Notable works are structures that benefit Connecticut's health, economy, well-being, and infrastructure. This could be a substantial listing since so many of our works provide substantial benefit.

The committee will publish descriptions in our newsletter as space permits. We propose publishing these descriptions on CSCE's web page also, possibly with hot links on a map.

Please suggest civil engineering works & submit the information below.

Name:	Location:
Function:	Owner:
Designed by:	Constructed by:
Year Completed:	Current Status:
Further Information:	
Notable Features (Narrative)	

Thank you.

Randall T. States, P.E.  
CSCE History and Heritage Committee  
[rtstates@geodesign.net](mailto:rtstates@geodesign.net)

# 125<sup>th</sup> Anniversary of CSCE

CSCE would like to thank all of you for celebrating our 125<sup>th</sup> Anniversary with us over the past year. CSCE has a wonderful, rich history, one that you have played a part in. We look forward to the future and writing the history that is to come.

WHITLOCK DALRYMPLE POSTON & ASSOCIATES, P.C.		
CONSULTING ENGINEERS		
<b>Service areas include:</b>		
Structural Engineering	Corrosion Assessment	
Nondestructive Testing	Repair and Rehabilitation Design	
Forensic Investigations	Litigation Support	
<b>Keith Kesner, Ph.D., P.E.</b>		
Associate kkesner@wdpa.com		
50 WASHINGTON STREET 203-354-4503 TEL Manassas, Virginia	SUITE 751 203-354-4528 FAX Austin, Texas	So. NORWALK, CT 06854 www.wdpa.com So. Norwalk, Connecticut



## HONORS AND AWARDS



This premier black-tie event, held in Washington, D.C., annually brings together the most recognizable names in civil engineering. On March 25, 2010, ASCE honored the remarkable achievements of civil engineers over the past year by awarding five lifetime achievement awards, the Outstanding Civil Engineering Achievement (OCEA) for the year's most outstanding project, the Charles Pankow Award for Innovation, the Henry L. Michel Award for Industry Advancement of Research, and the ASCE Excellence in Journalism Award.

For a list of winners and finalists, visit: <http://asce.org/Content.aspx?id=2147485073>



The ASCE Board of Direction has elected the 2010 Distinguished Members:

Imad L. Al-Qadi, Ph.D., P.E., Dist.M.ASCE; Robert L. Bowen, P.E., Dist.M.ASCE; Robert G. Dean, Sc.D., P.E., Dist.M.ASCE; Vincent P. Drnevich, Ph.D., P.E., D.GE, Dist.M.ASCE; John Dunncliff, P.E., Dist.M.ASCE; Bruce R. Ellingwood, Ph.D., P.E., Dist.M.ASCE; Dan M. Frangopol, Sc.D., P.E., Dist.M.ASCE; Lester A. Hoel, EngD, P.E., Dist.M.ASCE, NAE; Ahsan Kareem, Ph.D., Dist.M.ASCE, NAE; Francis J. Lombardi, P.E., Dist.M.ASCE; Paul F. Mlakar, Ph.D., P.E., Dist.M.ASCE; Harry G. Poulos, DScEng., P.E., Dist.M.ASCE; Stein Sture, Ph.D., Dist.M.ASCE

Congratulations to all! Nominations for 2011 are due on October 1, 2010. Visit the "Awards" section of ASCE's web site for more information.

**ASCE has many honors and awards to recognize deserving members. For a complete listing of all ASCE awards, please visit [www.asce.org/awards](http://www.asce.org/awards).**

***The Connecticut Society of Civil Engineers was formed in 1884. Separately, the Connecticut Section of the American Society of Civil Engineers (ASCE) was founded in 1919. The two organizations merged in 1981. We represent about 1,600 civil engineers statewide.***

## **2009 – 2010 CSCE Executive Board**

### *President*

**Ronald J. Nault, P.E.**  
Luchs Consulting Engineers  
DeCarlo & Doll  
Architects/Engineers  
87-89 Colony St.  
Meriden, CT 06451  
E-Mail: [President@csce.org](mailto:President@csce.org)  
Phone: (203) 379-0320  
Fax: (203) 379-0278

### *President-Elect*

**Rabih M. Barakat, P.E.**  
Connecticut Department of  
Transportation  
2800 Berlin Turnpike  
Newington, CT 06131-7546  
E-Mail: [President-Elect@csce.org](mailto:President-Elect@csce.org)  
Phone: (860) 594-3389  
Fax: (860) 594-3373  
Home: (203) 397-2996

### *Vice President*

**Jason F. Waterbury, P.E.**  
The Metropolitan District  
555 Main Street, P.O. Box 800  
Hartford, CT 06142-0800  
E-Mail: [Vicepresident@csce.org](mailto:Vicepresident@csce.org)  
860-278-7850 Ext. 3380 Office  
860-525-5013 Fax

### *Treasurer*

**Gregory K. Holness, P.E., Esq.**  
Permasteelisa North America  
Corp.  
123 Day Hill Road  
Windsor, CT 06095  
E-Mail: [Treasurer@csce.org](mailto:Treasurer@csce.org)  
Phone: (860) 298-2000  
Ext. 2484  
Fax: (860) 298-2009

### *Secretary*

**Robert Gomez, P.E.**  
VN Engineers, Inc.  
116 Washington Avenue  
North Haven, CT 06473  
203-234-7862 Office  
203-234-9154 Fax  
203-915-0893 Cell  
Email:  
[Secretary@csce.org](mailto:Secretary@csce.org)

### *Newsletter Editor*

**Sara A. Ramsbottom, P.E.**  
Connecticut Department of  
Public Health  
410 Capitol Avenue  
MS# 51 WAT  
P.O. Box 340308  
Hartford, CT 06134-0308  
E-Mail: [NL-Editor@csce.org](mailto:NL-Editor@csce.org)  
Phone: (860) 509-7333  
Fax: (860) 509-7359

### *Director I*

**Christopher M. Holden, P.E.**  
162 Apple Tree Lane  
Portland, CT 06480  
E-Mail: [Director-I@csce.org](mailto:Director-I@csce.org)  
Office: (860) 343-8085 Ext. 155  
Fax: (860) 343-8091  
Cell: (860) 883-4028

### *Director II*

**James L. Silva, P.E.**  
Silva Engineering, LLC  
Windham Mills Technology  
Center  
322 Main Street, Bldg. 2  
2nd Floor East  
Willimantic, CT 06226  
E-Mail: [Director-II@csce.org](mailto:Director-II@csce.org)  
Phone: (860) 423-4506  
Fax: (860) 423-1875

### *ASCE National Contact*

### **ASCE Region 1 Society**

### **Director**

**Anthony M. Puntin, P.E.**  
The Louis Berger Group  
1001 Elm St., Suite 300  
Manchester, NH 03101  
Phone: (603) 644-5200 Ext. 362  
(Office)  
Fax: (603) 644-5220  
Cell: (603) 496-1784  
[apuntin@louisberger.com](mailto:apuntin@louisberger.com)

## **FAIRFIELD BRANCH**

### *President*

**Ron Hill**  
15 East Ridge Road  
Ridgefield, CT 06877  
203-788-8021 Cell  
203-431-0442 Home  
[president.fairfield@csce.org](mailto:president.fairfield@csce.org)

## TECHNICAL GROUP CHAIRS

### Construction

#### William J. Cunningham, P.E.

Siefert Associates, LLC  
180 Church St., Suite 6  
Naugatuck, CT 06770  
203-723-5830 Office  
203-723-9346 Fax  
860-582-7893 Home  
[gugsbilly@aol.com](mailto:gugsbilly@aol.com)

### Geotechnical

#### Gary J. Fuerstenberg, P.E.

GEI Consultants  
455 Winding Brook Drive  
Glastonbury, CT 06033  
860-368-5300 Office  
860-368-5307 Fax  
[gfuerstenberg@GEIconsultants.com](mailto:gfuerstenberg@GEIconsultants.com)

### Structures

#### Mark J. Rodriguez

61 Pine Street  
Naugatuck, CT 06770  
203-597-7497 Office  
[markrodriguez78@gmail.com](mailto:markrodriguez78@gmail.com)

## COMMITTEE CHAIRS

### Programs

#### Jeff Benoit, P.E.

CT Dept. of Transportation  
40 Taft Pond Road  
Pomfret Center, CT 06259  
860-974-2572 Home  
860-933-8772 Cell  
[jeffbenoit@earthlink.net](mailto:jeffbenoit@earthlink.net)

### Membership

#### Jason F. Waterbury, P.E.

The Metropolitan District  
555 Main Street, P.O. Box 800  
Hartford, CT 06142-0800  
860-278-7850 Ext. 3380 Office  
860-525-5013 Fax  
[Vicepresident@csce.org](mailto:Vicepresident@csce.org)

### Career Guidance

#### Christopher M. Holden, P.E.

162 Apple Tree Lane  
Portland, CT 06480  
E-Mail: [Director-I@csce.org](mailto:Director-I@csce.org)  
Office: (860) 343-8085 Ext. 155  
Fax: (860) 343-8091  
Cell: (860) 883-4028

### Legislative Affairs

#### Roy Merritt, P.E.

HW Lochner, Inc.  
424 Chapel St.  
New Haven, CT 06511  
203-752-1830 Office  
203-752-1937 Fax  
860-670-7540 Cell  
[rmerritt@hwlochner.com](mailto:rmerritt@hwlochner.com)

### Water Resources

#### Thomas A. Loto, P.E., BCEE

Malcolm Pirnie, Inc.  
100 Roscommon Dr., Suite 100  
Middletown, CT 06457  
860-613-7407 Office  
860-632-0036 Fax  
860-830-1418 Cell  
[tloto@pirnie.com](mailto:tloto@pirnie.com)

### Continuing Education

#### Jason F. Waterbury, P.E.

The Metropolitan District  
555 Main Street, P.O. Box 800  
Hartford, CT 06142-0800  
E-Mail: [Vicepresident@csce.org](mailto:Vicepresident@csce.org)  
860-278-7850 Ext. 3380 Office  
860-525-5013 Fax

### Government Engineers

#### Rabih M. Barakat, P.E.

CT Dept. of Transportation  
2800 Berlin Turnpike  
Newington, CT 06131-7546  
860-594-3389 Office  
860-594-3373 Fax  
203-397-2996 Home  
[President-Elect@csce.org](mailto:President-Elect@csce.org)

### Web Site

#### Christopher M. Holden, P.E.

162 Apple Tree Lane  
Portland, CT 06480  
E-Mail: [Director-I@csce.org](mailto:Director-I@csce.org)  
Office: (860) 343-8085 Ext. 155  
Fax: (860) 343-8091  
Cell: (860) 883-4028

### History & Heritage

#### Randall T. States, P.E.

GeoDesign, Inc.  
984 Southford Road  
Middlebury, CT 06762  
203-758-8836 Ext. 111 Office  
203-758-8842 Fax  
203-530-5423 Cell  
[rtstates@geodesign.net](mailto:rtstates@geodesign.net)

### Scholarship Fund

#### Jim Sime, P.E.

CT Dept. of Transportation  
280 West Street  
Rocky Hill, CT 06067  
860-258-0309 Office / 860-569-4186 Home  
860-258-0399 Fax  
[james.sime@skiltons.org](mailto:james.sime@skiltons.org)

### Younger Members

#### Sara A. Ramsbottom, P.E.

CT Department of Public Health  
410 Capitol Avenue  
MS# 51 WAT  
P.O. Box 340308  
Hartford, CT 06134-0308  
860-509-7333 Office  
[sara.ramsbottom@ct.gov](mailto:sara.ramsbottom@ct.gov) or  
[nl-editor@csce.org](mailto:nl-editor@csce.org)

## FACULTY ADVISORS

### Central Connecticut State University

**Clifford Anderson, Ph.D., D.WRE**

Assistant Professor  
Department of Engineering  
Copernicus Hall Room 21207  
1615 Stanley Street  
New Britain, CT 06050-1040  
860-832-1849 Office  
[andersoncle@ccsu.edu](mailto:andersoncle@ccsu.edu)

### University of Connecticut

**Richard Christenson, Ph.D.**

Assistant Professor  
Department of Civil and Environmental Engineering  
University of Connecticut  
261 Glenbrook Rd., UNIT-2037  
Storrs, CT 06269  
860-486-2270 Office  
860-486-2298 Fax  
[chrliste@engr.uconn.edu](mailto:chrliste@engr.uconn.edu)

### United States Coast Guard Academy

**Hudson Jackson, Ph.D., P.E.**

Engineering Department  
15 Mohegan Avenue  
New London, CT 06320-8103  
860-444-8315 Office  
860-444-8546 Fax  
[Hudson.V.Jackson@uscga.edu](mailto:Hudson.V.Jackson@uscga.edu)

### Three Rivers Community Technical College

**Diba Khan-Bureau**

Professor & Program Coordinator  
Environmental & Civil Engineering Technology Programs  
574 New London Turnpike  
Norwich, CT 06360  
860-885-2383 Office  
860-886-4960 Fax  
[dkhan-bureau@trcc.commnet.edu](mailto:dkhan-bureau@trcc.commnet.edu)

### University of New Haven

**Jean Nocito-Gobel, Ph.D.**

Department of Civil & Environmental Engineering  
300 Boston Post Road  
West Haven, CT 06516  
203-932-7155 Office  
203-932-7158 Fax  
[jnocito-gobel@newhaven.edu](mailto:jnocito-gobel@newhaven.edu)

### University of Hartford

**David Pines, Ph.D.**

Chair and Associate Professor  
Department of Civil, Environmental & Biomedical Engineering  
200 Bloomfield Avenue  
West Hartford, CT 06117  
860-768-4560 Office  
860-768-5073 Fax  
[pines@hartford.edu](mailto:pines@hartford.edu)

## 2009-2010 CSCE NEWSLETTER ADVERTISING RATES

<u>Options</u>	<u>Prices</u>
A. Business Card (reduced to approx. 1 1/2" X 2 5/8")	\$400 min 6 issues
B. One-Quarter Page	\$750 min 6 issues
C. One half 8-1/2 x 11 in. Advertisement	\$325 per issue
D. One full 8-1/2 x 11 in. Advertisement	\$550 per issue
E. Employment Classified Ad: In-State Position	\$15 / line / issue
F. Employment Classified Ad: Out-of-State Position	\$20 / line / issue

Employment Classified Ads of five (5) lines or less (subject to editing) for in-state positions are published free of charge as a professional courtesy to our membership. We anticipate publishing at least eight issues per year. There are approximately 1600 subscribers to the CSCE Newsletter.

If you are interested in placing an ad, send an email to Amy Petrone at [admin@csce.org](mailto:admin@csce.org).