



Connecticut Society of Civil Engineers

www.csce.org

Section of the American Society of Civil Engineers

125th Anniversary of CSCE

April 2010 Newsletter

In this issue:

Tuesday, April 20, 2010 dinner meeting

President's Message

ACE Awards Dinner – Tuesday, May 11, 2010

2010 Student Award winners

Employment Opportunities

April 2010 Dinner Meeting

Date: Tuesday, April 20, 2010

Location: United States Coast Guard Academy (USCGA) Officers' Club, New London, CT

Sponsor: Geotechnical Technical Group

Topic: Homestead Avenue Interceptor Sewer (Hartford, CT)

The Homestead Avenue Interceptor Sewer is part of the MDC's Clean Water Project. The presentation will open with a summary of the Clean Water Project and its key projects. Discussion will include design aspects and challenges for tunneling under active railroads and highways. Trenchless construction techniques and other construction aspects will also be discussed.

Speakers: Alan Pelletier, P.E. and Mike Mancini, P.E., L.S., The Metropolitan District (MDC); James Sullivan, P.E., AECOM

Thank you to all who came down to USCGA. We had a great turnout and hope to see you again at the ACE Awards dinner.

Congratulations to the 2010 Student Award winners

Awards were presented at the April dinner meeting to the following students:

Student Scholarship Award:

Dustin Briere of the University of New Haven
Corey Forte of the University of Connecticut at Storrs
David Kent of the United States Coast Guard Academy
Emily McDermott of the University of Hartford

Outstanding Student Award:

Nicholas Carrozza of the University of Hartford
Trevor Clark of the United States Coast Guard Academy
Kevin Zmetra of the University of Connecticut at Storrs

For more information & pictures of the presentations, visit www.csce.org.

President's Message

Last month featured CSCE's sponsorship of the airing, on Connecticut Public Television, of the documentary "Liquid Assets" highlighting the benefits and demands upon our clean water infrastructure. It was a great success thanks in large part to the hard work by Mario Ricozzi and our partner sponsors.

For our April 20th meeting we return to the grounds of the U.S. Coast Guard Academy focused on a program put together by our Geotechnical Committee about some of the exciting work being undertaken by MDC under their Clean Water Program. This comes on the heels of the very successful March meeting where over 75 people attended an update on the monumental Q Bridge Project – held at the historic Graduate Club in downtown New Haven. Earlier, 20 people attended a walking tour of the active construction site – very impressive examples of the geotechnical, structural and construction engineering capabilities of Civil Engineers.

Recently, U.S. News and World Report ranked Civil Engineering as one of the top careers for the next decade. Better days are ahead.....

Finally, we are building momentum for our 3rd Achievement in Civil Engineering (ACE) Awards ceremony to be held on Tuesday, May 11th at the Aqua Turf. Twelve projects have received nominations for an award. And the winners are..... to be announced only on the Big Night. See information in this newsletter or our web site (www.CSCE.org) to help sponsor the evening and to register to attend. It promises to be a fun and exciting evening.

See you in New London on April 20th.

Respectfully Submitted,

Ronald J. Nault, P.E., M. ASCE

2010 – 2011 CSCE Executive Board Nominations

At the April meeting, the following individuals were nominated for the CSCE Executive Board for the coming year; William Cunningham was nominated in place of Dan Kinard, who had been announced at the meeting:

President:	Rabih Barakat
President-Elect:	Jason Waterbury
Vice-President:	William Cunningham
Treasurer:	Robert Gomez
Secretary:	Gregory Holness
Newsletter Editor:	Sara Ramsbottom
Director I:	Ronald Nault
Director II:	Christopher Holden

The final vote for 2010 – 2011 Executive Board members& swearing-in will take place at the ACE Awards dinner on Tuesday, May 11, 2010.

Upcoming CSCE Events

May 2010

Tuesday, May 11, 2010 – 3rd Annual ACE Awards @ Aqua Turf Club, Southington, CT
See page 5 for more information and registration to sponsor and/or attend

July 2010

Friday, July 23, 2010 – Annual Golf Tournament @ The Tradition, Wallingford, CT

ACSE National Conferences

2010 Structures Congress – May 12-14, 2010, Orlando, FL

Visit http://content.asce.org/conferences/Structures_2010/index.html for more information.

2010 World Environmental and Water Resources Congress – May 16 – 20, 2010, Providence, RI

Visit <http://content.asce.org/conferences/ewri2010> for more information.

140th Annual Civil Engineering Conference – October 21-23, 2010, Las Vegas, NV

Visit <http://content.asce.org/conferences/annual2010/index.html> for more information.

1st T&DI Green Streets & Highways Conference – November 14-17, 2010, Denver, Colorado

Visit <http://content.asce.org/conferences/greenstreets-highways2010/index.html> for more information.

For a complete listing of all ASCE conferences, please visit: <http://asce.org/conferences>

Other Events

American Council of Engineering Companies 2010 Annual Convention and Legislative Summit
April 25-28, 2010, Washington, DC; Visit www.acec.org for more information

Army Corp of Engineers, North Atlantic Division – Small Business Conference 2010

May 11-12, 2010, New York City; visit www.nan.usace.army.mil/sbc2010/index.html for more information

If you have or know of an event that you would like to include in the newsletter, please send an email to NL-editor@csce.org.

Region 1 News

What's going on in Region 1? Find out at <http://region1.asce.org>! New announcements have recently been added. Also check the site for events happening at other nearby ASCE sections and branches.

The Spring Assembly recently concluded and plans are underway for the September 2010 Region 1 assembly. It will be held the weekend of September 18th or 25th in Ithaca, NY. Bill Merwarth and the Ithaca section are organizing of this event. More details will follow as the event approaches.

Achievement in Civil Engineering - ACE Awards

Tuesday, May 11, 2010 @ Aqua Turf Club, Southington

Come joins us for the Third Annual Achievement in Civil Engineering (ACE) Awards program!

The ACE Awards will commend projects on which significant engineering expertise or innovation were exhibited. The project categories include: Water Resources/Environmental; Transportation; Geotechnical; Structural; and Construction.

If you are interested in becoming a sponsor and/or attending the ACE Awards, click on the registration link below. Sponsorship forms are due by Friday, April 30th. Individual attendance registration is due by Friday, May 7th.

We look forward to seeing you there!

[Click on this link for the 2010 Registration Sponsorship Form](#)



Benjamin Wright Award

The **Benjamin Wright Award** is CSCE's highest award, presented each year to a civil engineer practicing in Connecticut who has demonstrated outstanding practice his or her career, and made significant contributions to civil engineering. Please consider nominating a deserving colleague. Nominations were due March 31, 2010. The Executive Board will vote to determine the award winner and make the presentation at our annual ACE Awards dinner on May 11, 2010. Candidates will be considered for 10 years following their nomination.

Civil Engineering Among Top Careers in 2010 and Beyond!

The February issue of *Civil Engineering* magazine noted that in the December 28, 2009 issue of *U.S. News and World Report* civil engineering was included in a list of the 50 best careers for 2010. Also included on the list were urban planner, hydrologist, environmental engineering technician, and environmental science technician. To read the entire article, go to: <http://civil-engineering.asce.org/>

A Chance For You To Provide Input On Employment Issues Of Civil Engineers!

The Committee on Employment of Civil Engineers (CECE) needs your help to identify the current and future employment issues that are paramount to our profession. Please take our brief survey online at <http://www.zoomerang.com/Survey/WEB22AG44CMEA8>. CECE plans to issue this survey every six months in order to identify trends, and will use the results of this survey to guide and focus future efforts addressed by the committee. Survey results will be made available through ASCE's web site and publications.

The survey should take less than 10 minutes to complete and all responses will be kept confidential. Please contact ASCE staff member Becky Waldrup, at 703-295-6281 or rwaldrup@asce.org if you would like additional information or have any questions about the survey or the committee's work.

This survey will be active until May 5, 2010. Thanks for your help!



Deepening and
 Groundwater Control
 Ground Freezing
 Earth Retention and
 Excavation Support
 Deep Foundations
 Underpinning Systems
 Grouting Systems
 Environmental
 Remediation
 Industrial Construction

MORETRENCH

There's MORE to MORETRENCH.
MORETRENCH.COM • 800-394-MORE

New Jersey • Florida • New York • Massachusetts • Pennsylvania • Indiana • Washington, DC



**HALEY &
ALDRICH**

For over 50 years, providing services in:

- Geotechnical Engineering
- Site/Subsurface Characterization
- Environmental Regulatory Compliance
- Geothermal Energy
- Construction Monitoring

800 Connecticut Blvd.
 East Hartford CT 06108
 860.282.9400
HaleyAldrich.com

THE STORY OF OUR WATER INFRASTRUCTURE

Liquid Assets

As our primary 125th anniversary activity, CSCE sponsored and coordinated an airing of the *Liquid Assets* documentary on CPTV. *Liquid Assets* is a public media and outreach initiative that seeks to inform the nation about the critical role that our water infrastructure plays in protecting public health and promoting economic prosperity.

CSCE would like to thank all those who helped make the airing of *Liquid Assets* on CPTV on Sunday, March 28th, such a success!

CSCE extends special thanks to our Supporting Sponsors:

PLATINUM:



GOLD:



SILVER:

CARDINAL ENGINEERING ASSOCIATES, INC.

CONSULTING CIVIL ENGINEERS

**HALEY &
ALDRICH**



Tighe & Bond
Consulting Engineers
Environmental Specialists

**MALCOLM
PIRNIE**

Solutions for Life™



CLIENTS | PEOPLE | PERFORMANCE



Liquid Assets
liquidassets.psu.edu



Unemployed? ASCE National has a program to waive dues of unemployed members. For more information, please contact Patrick Ballou directly at the following address:

Patrick Ballou
 Membership Coordinator
 American Society of Civil Engineers
 1801 Alexander Bell Drive
 Reston, VA 20191-4400
 Toll free: 1-800-548-ASCE
 Direct: 703-295-6169
 Fax: 703-295-6335

EMPLOYMENT OPPORTUNITIES

Construction Engineer – Geotechnical and Structural Fields: Siefert Associates, LLC, a Civil-Structural Engineering Firm involved in Bridge Design and the Construction Industry is seeking a self-motivated Civil Engineer with PE Certification and field experience to join it's team in Central CT. Projects are diverse and challenging in NY, CT, NJ, MA and RI. See website for more info: www.siefertassociates.com

The Connecticut Department of Public Health (DPH) has posted a continuous recruitment **Sanitary Engineer I** examination open to the public. In order to apply for a job with this title, an individual must have taken and passed this exam. Visit the Department of Administrative Services (DAS) website at www.das.state.ct.us and click on “Jobs”, then “State Employment Examinations” for information.

Structural Engineer needed for reinforced concrete building foundations and concrete high rise designs. Please send resume to jrogers@pustola.com.

Professional Civil Engineer: CME Associates, Inc. is seeking a full-time Civil Engineer to work in our East Hartford office. The ideal candidate possesses a CT PE License with a minimum of 7 years experience in highway/transportation design and is familiar with CT DOT policies and procedures. Proficiency in Microstation is required while experience with In-Roads is considered a plus. Interested candidates should send a cover letter, resume, and three references to: CME Associates, Inc., Attn: Human Resources, PO Box 849, Woodstock, CT 06281. CME is an Equal Opportunity Employer.

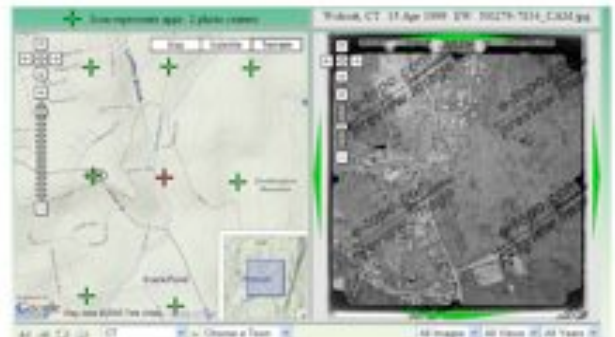
See also ASCE Career Connections: <http://careers.asce.org/search.cfm>


EASTERN TOPOGRAPHICS

Our extensive library includes over 150,000 **LOW ALTITUDE IMAGES**, allowing us to provide detailed, engineering level mapping year round.

We offer a **LOW PRICE GUARANTEE** with every project—visit our website www.e-topo.com for details.

FREE downloads of low altitude aerial images of CT, MA, ME, NH, NY, NJ and RI are available **ONLINE**.






SOILTESTING, INC.
 140 Oxford Road
 Oxford, CT 06478
 203-888-4531
 White Plains, NY • 914-946-4850
 Since 1958

GEOTECHNICAL INVESTIGATIONS
 Test Borings
 Rock Coring
 Monitor Wells

PILES / ANCHORS
 Helical Piles & Tiebacks
 Micro Piles
 Tiedown Anchors

UNDERPINNING
Stop / Reverse Foundation Settlement
 Resistance Piers –
 35 to 50 kip Capacity
 Helical Piles

www.soiltestinginc.net
1-800-388-4473



**GEODESIGN
 INCORPORATED**

Geotechnical | Construction | Environmental
 Engineers and Scientists

Subsurface Explorations
 Deep Foundations
 Geotechnical Special Inspections
 Geotechnical Instrumentation
 Demolition & Erection Plans
 Sheet piling/Shoring Design
 Underpinning
 Vibration Monitoring
 Site Assessments
 Remediation
 Contaminated Soils Management
 Permitting

984 Southford Rd. Middlebury, CT 06762 (203) 758-8836
 246 W. 38th St. New York, NY 10018 (212) 221-6651

www.geodesign.net

Younger Member Employer Recognition Award

The Committee on Younger Members (CYM) is seeking nominations for the 2010 Younger Member Recognition Award. The Employer Recognition Award was created to recognize employers who support young engineers and assist with their personal development. CYM also awards two Superior Employer Recognition Awards (one public, one private) to the nominees who best display exemplary support of young engineers in their organizations. A list of winning organizations will be submitted for publication in ASCE News and included in the Younger Member Newsletter.

Thank you for your continuing support. If you have any questions or comments, please feel free to contact douglas.d.knapp@usace.army.mil.

Douglas D. Knapp, P.E., M.ASCE
 Chair, ASCE Committee on Younger Members

More information and the nomination form are on the next 4 pages.



2010 ASCE CYM Employer Recognition Nomination

For Exemplary Support of Young Engineer Involvement in ASCE Activities

Introduction: Young engineer enthusiasm, meaningful involvement, and growth are the keys to ASCE's future. As a means of fostering individual Younger Member participation in Society activities, the ASCE Committee on Younger Members (CYM) has developed a program to help Sections and Branches recognize those employers who encourage their Young engineers to get involved in ASCE activities. Special recognition will go to those organizations that exhibit exemplary support evidenced by efforts such as:

- Providing a model for involvement through company-wide participation in local, regional and national ASCE activities
- Encouraging and supporting Younger Members to attend ASCE meetings and seminars
- Encouraging Younger Members to prepare articles for publication in ASCE professional and technical journals
- Assisting in the payment of local and national dues

Guidelines:

The program will operate as follows:

1. CYM will review nominations at its Fall meeting and select organizations for recognition. Additional credit will not be awarded for packages in addition to the provided form.
2. Incomplete nomination forms will be disqualified.
3. For those organizations selected, CYM will:
 - a. Publish a list of winning organizations in the Younger Member Newsletter
 - b. Submit a list of winning organizations for publication in Civil Engineering magazine or ASCE News.
 - c. Encourage Sections/Branches to provide winning organizations with local recognition
 - d. Notify nominators of winning organizations.
 - e. Send a certificate to the Section or Branch President for local presentation.
4. CYM will award a **Superior Employer Recognition Award** to a one public entity nominee and one private entity nominee that showed exemplary support of Young Engineers in their organizations during the 2009 calendar year. This award was created to recognize admired employers who acknowledge that young engineers are today's leaders in the profession and set goals for their personal development.
5. Your organization may be nominated for the award each year. If your organization is a previous winner of the award, the following year's nominator must be a different Younger Member in the firm. The nominator must be an ASCE Affiliate Member, Associate Member, or Member in good standing.
6. Separate nomination forms are to be submitted for individual office locations of an organization with multiple offices.



2010 ASCE CYM Employer Recognition Nomination Form

Instructions:

Please fill out and return this nomination form by e-mail to Nancy Berson, nberson@asce.org. Cite specific examples to backup your assertions and use additional pages if necessary. Please submit in either PDF or Microsoft Word format, limiting the nomination form to a total of 4 pages (not including Page 1). Incomplete nomination forms and nominations using an old form will be disqualified. Thank you for your continued support of ASCE. The deadline for submittals is **August 1, 2010**.

I. General Information

Name of Nominee (Company, Agency Name):			
Name of Branch/Office Being Nominated:			
Type of Company (Private or Public):			
Address:			
Name of Nominator: <i>(Must be a Younger Member employed by the nominee)</i>		Title:	
Email:			
Age of Nominator:	ASCE Membership ID#	ASCE Membership Grade	
ASCE Region	Section	Branch	

II. Employee Distribution (9 points)

How many Civil Engineers age 35 and under are employed at the local office?	
How many of these Civil Engineers are Professional Engineers?	
How many of these Civil Engineers are current ASCE members?	
How many of the Civil Engineers who are current ASCE members pay Section dues?	

III. Employee Participation (16 points)

For those young engineers who are ASCE members:

How many are active on a Section or Branch Board?	
How many are active on a Section or Branch Committee?	
How many are active on an ASCE Regional Council or Society Committee?	
How many attended Regional, Institute, or Society Conferences?	

IV. Employer Participation (75 points)

In what ways does the nominee provide opportunity and support for continuing education/technical development for young engineers? (College courses, in-house programs, licensure preparation, etc.)

In what ways does the nominee provide opportunity and support for advanced professional development for young engineers? (Involvement in professional societies, project management training, mentoring, etc.)

How does the nominee support and encourage Younger Member attendance at Section/Branch/YMG meetings?

What does the nominee do to support and encourage young engineers to publish articles for publication in ASCE technical/professional journals? (Staff, time, honorarium, etc.) Please list any articles written by Younger Members have been published in the last calendar year.

How does the nominee assist Younger Members with Society dues, Section/Branch dues, and/or subscriptions to ASCE technical/professional journals?

PREPARED BY:

Nominator's Printed Name:		Date:	
Nominator's Signature:			

SECTION/BRANCH ENDORSEMENT (REQUIRED):

Title of Endorser:			
Printed Name:		Date:	
Signature:			

FOR ASCE USE:

Date Received:	
----------------	--

ASCE Unveils New Website!

After more than a year of gathering input and compiling extensive research, ASCE's new web site reflects the insights of our members and the usability functions members have come to expect when searching for information, including events, technical information, networking opportunities, and more.

So, what's new about it? Here are some highlights:

A modern, clean site will showcase ASCE with high quality images and informative content presented more effectively. Each time you visit the main page, you will see a large photo of a significant engineering example in the world around us. The image you see is one of many in a built-in carousel that will rotate as you spend time on the site.

Improved content organization was another high priority in the site makeover. The main site navigation has moved from the left side to the top of the page. The content on the site is organized by the Society's four sub-brands: Knowledge and Learning; Leadership and Management; Issues and Advocacy; and Membership and Community. You may have noticed these sub-brands showing up in *ASCE News* and elsewhere over the past few months. On the Web site, each sub-brand has nine main categories shown in its drop-down menus.

Better navigation was one of the requests that we heard repeatedly in the member surveys conducted during the planning stages. **The new site has three separate search menus.** The top of every page includes two menus. One will allow you to browse by topic; the other allows you to type in your own search term and search all our electronic content. On some pages, a third search menu in the left column enables you to search within the section, such as within awards or books. By tagging the content on each page, the new site now allows information to be aggregated more logically. The result is cross-referenced content presented in highlighted boxes on the sides of the page.

Audience pages have been created to help the non-engineering public access the site more easily and become better educated about ASCE and global issues that are important to civil engineers. This new feature will allow visitors to find information specifically targeted to their needs by entering through portals on the homepage labeled: Employers; Media; Kids, Parents & Teachers; Sponsorship & Advertisers; Students; Faculty; Authors & Educators; and Donors.

Social Media tools have been incorporated to take advantage of the dynamic world of community networking. Visitors can now access an RSS feed to receive the latest information on ASCE blogs, podcasts, and press releases. A menu of social media sites (including Facebook, LinkedIn, and many others) is visible near the RSS feed, and allows users to link and easily post ASCE content to share with others. You can even customize your Web experience through our new social media application called My ASCE. Using this tool, you can search for colleagues, set up communities and create a dedicated work space. Look for My ASCE at the top right hand corner of our home page.

Check it all out @: www.asce.org

125th Anniversary of CSCE

Charles Rufus Harte (1870 - 1956)

As we close out our extended 125th anniversary of the Connecticut Society of Civil Engineers (CSCE) we recognize a great contributor to the society and its history. C. R. Harte, as he was commonly known, was a man of many and varied talents. He was a nationally known engineer involved with electrification of rail lines. He also served as president of Connecticut Section of ASCE (1920-1921) and CSCE (1939). Throughout his life he was dedicated to the history of engineering and industry in Connecticut and the northeast. He was an active member of the Connecticut Historical Society, the American Electric Railway Association and leader of the Electrical Standards Committee of the American Standards Association.

Mr. Harte was born in Marietta, Ohio and lived there until he was 14. His family moved to New York City and he graduated from Columbia University in 1893 with a degree in civil engineering. Mr. Harte was employed as a surveyor for the New Haven Railroad and helped survey the new alignment of the Naugatuck spur. He then completed rail electrification projects in Nova Scotia and Indiana for a Boston engineering firm.

In 1904 Mr. Harte returned to Connecticut as the engineer in charge of converting a two track alignment to four tracks in New Haven. He was next employed by the Connecticut Company's Street Car Division to lay out, design and construct electric rails, power lines and substations. During World War I Mr. Harte led a War Department assignment to map electric rail lines on the East and West coasts in preparation for logistical operations should the artillery have to respond to attacks.

Mr. Harte photographed many engineering works under construction and the remnants of historic infrastructure throughout New England. His collection of negatives and prints was used to compile the book "New Haven, CT, From the Collection of Charles Rufus Harte" Arcadia Publishing 2003. Mr. Harte personally researched the Northampton Canal, walking and photographing the route from New Haven to Northampton, MA. He also published articles about Connecticut Canals, the Revolutionary War, mining and minerals, and the iron industry in Connecticut and he authored "The History of the First Fifty Years of the Connecticut Society of Civil Engineers, Incorporated and its Predecessors 1884 - 1934".

Mr. Harte's legacy lives on as his articles and research are referenced by Yale University's Peabody Museum for minerals and mining, the Connecticut Historical Society (which provided source material for this brief biography), West Point Military Academy, the Connecticut Mining Museum, the New Haven Museum and Historical Society and many other institutions.

Randall T. States, P.E.,
CSCE History and Heritage

You can help the History and Heritage Committee

The committee seeks brief descriptions of notable civil engineering works throughout Connecticut. Notable works are structures that benefit Connecticut's health, economy, well-being, and infrastructure. This could be a substantial listing since so many of our works provide substantial benefit.

The committee will publish descriptions in our newsletter as space permits. We propose publishing these descriptions on CSCE's web page also, possibly with hot links on a map.

Please suggest civil engineering works & submit the information below.

Name:	Location:
Function:	Owner:
Designed by:	Constructed by:
Year Completed:	Current Status:
Further Information:	
Notable Features (Narrative)	


Thank you.

Randall T. States, P.E.
 CSCE History and Heritage Committee
rtstates@geodesign.net

SIEFERT ASSOCIATES, LLC
CONSTRUCTION ENGINEERS

VINCENT A. SIEFERT, P.E.

180 Church Street, Suite 6
 Naugatuck, CT 06770
 203-723-1477
 203-723-9546 fax
 e-mail: vsiefert@siet.net



HELLER AND **J**OHNSEN

Consulting Geotechnical Engineers

Investigations • Design • Field Services

Foot of Broad Street
 Stratford, CT 06615

T: (203)380-8188
 F: (203)380-8198

WHITLOCK DALRYMPLE POSTON & ASSOCIATES, P.C.
 CONSULTING ENGINEERS

Service areas include:

Structural Engineering	Corrosion Assessment
Nondestructive Testing	Repair and Rehabilitation Design
Forensic Investigations	Litigation Support

Keith Kesner, Ph.D., P.E.
Associate
 kkesner@wdpa.com



50 WASHINGTON STREET SUITE 751 So. NORWALK, CT 06854
 203-354-4503 TEL 203-354-4528 FAX www.wdpa.com
 Manassas, Virginia Austin, Texas So. Norwalk, Connecticut



HONORS AND AWARDS



This premier black-tie event, held in Washington, D.C., annually brings together the most recognizable names in civil engineering. On March 25, 2010, ASCE honored the remarkable achievements of civil engineers over the past year by awarding five lifetime achievement awards, the Outstanding Civil Engineering Achievement (OCEA) for the year's most outstanding project, the Charles Pankow Award for Innovation, the Henry L. Michel Award for Industry Advancement of Research, and the ASCE Excellence in Journalism Award.

For a list of winners and finalists, visit: <http://asce.org/Content.aspx?id=2147485073>
Nominations for 2011 are due June 1, 2010.



The ASCE Board of
Direction has elected the

2010 Distinguished Members:

Imad L. Al-Qadi, Ph.D., P.E., Dist.M.ASCE; Robert L. Bowen, P.E., Dist.M.ASCE; Robert G. Dean, Sc.D., P.E., Dist.M.ASCE; Vincent P. Drnevich, Ph.D., P.E., D.GE, Dist.M.ASCE; John Dunncliff, P.E., Dist.M.ASCE; Bruce R. Ellingwood, Ph.D., P.E., Dist.M.ASCE; Dan M. Frangopol, Sc.D., P.E., Dist.M.ASCE; Lester A. Hoel, EngD, P.E., Dist.M.ASCE, NAE; Ahsan Kareem, Ph.D., Dist.M.ASCE, NAE; Francis J. Lombardi, P.E., Dist.M.ASCE; Paul F. Mlakar, Ph.D., P.E., Dist.M.ASCE; Harry G. Poulos, DScEng., P.E., Dist.M.ASCE; Stein Sture, Ph.D., Dist.M.ASCE

Congratulations to all! Nominations for 2011 are due on October 1, 2010.
Visit the "Awards" section of ASCE's web site for more information.

ASCE has many honors and awards to recognize deserving members. For a complete listing of all ASCE awards, please visit www.asce.org/awards.

Younger Member Committee News

Are you a Younger Member?

The Younger Member Committee comprises CSCE members that are 35 years of age or younger, including professionals and undergraduate and graduate students. The Committee fosters the professional growth, ethical awareness, and technical competence of the Section's younger members. The Committee meets monthly to organize activities throughout the year, including social and community service events. If you are interested in joining the Committee, attending a meeting, or would like more information, please contact Sara Ramsbottom at sara.ramsbottom@ct.gov.

Happenings...

On March 26, 2010, the Younger Member Committee hosted a Hartford Wolfpack hockey game night. CSCE members and their families and friends enjoyed watching a 3-2 shootout victory for the Wolfpack. The Committee will be hosting a Bridgeport Bluefish baseball game night this summer. Be on the look out for more information.

In March, Younger Member Ines Walther organized a clean-up at Silver Sands State Park in Milford. Attendance was well over expected numbers resulting in a trash-free State Park!

For more information on future events, please contact Sara Ramsbottom at sara.ramsbottom@ct.gov.

SAVE THE DATE!!!

2010

CSCE Golf Tournament



Friday, July 23, 2010

The Tradition in Wallingford

Next Committee Meeting...

The next meeting is tentatively scheduled for mid-May. Please contact Sara Ramsbottom at sara.ramsbottom@ct.gov if you are interested in attending.

Meet your Younger Members...

Name: Jen Buchanon, P.E.

Member Since: 2005

Education: B.S.C.E., University of Massachusetts, Amherst
M.S.C.E., Columbia University, New York

Position: Engineer at Haley & Aldrich in East Hartford, CT

Specialization: Geotechnical & Environmental Engineering



The Connecticut Society of Civil Engineers was formed in 1884. Separately, the Connecticut Section of the American Society of Civil Engineers (ASCE) was founded in 1919. The two organizations merged in 1981. We represent about 1,600 civil engineers statewide.

2009 – 2010 CSCE Executive Board

President

Ronald J. Nault, P.E.
Luchs Consulting Engineers
DeCarlo & Doll
Architects/Engineers
87-89 Colony St.
Meriden, CT 06451
E-Mail: President@csce.org
Phone: (203) 379-0320
Fax: (203) 379-0278

President-Elect

Rabih M. Barakat, P.E.
Connecticut Department of
Transportation
2800 Berlin Turnpike
Newington, CT 06131-7546
E-Mail: President-Elect@csce.org
Phone: (860) 594-3389
Fax: (860) 594-3373
Home: (203) 397-2996

Vice President

Jason F. Waterbury, P.E.
The Metropolitan District
555 Main Street, P.O. Box 800
Hartford, CT 06142-0800
E-Mail: Vicepresident@csce.org
860-278-7850 Ext. 3380 Office
860-525-5013 Fax

Treasurer

Gregory K. Holness, P.E., Esq.
Permasteelisa North America
Corp.
123 Day Hill Road
Windsor, CT 06095
E-Mail: Treasurer@csce.org
Phone: (860) 298-2000
Ext. 2484
Fax: (860) 298-2009

Secretary

Robert Gomez, P.E.
VN Engineers, Inc.
116 Washington Avenue
North Haven, CT 06473
203-234-7862 Office
203-234-9154 Fax
203-915-0893 Cell
Email:
Secretary@csce.org

Newsletter Editor

Sara A. Ramsbottom, P.E.
Connecticut Department of
Public Health
410 Capitol Avenue
MS# 51 WAT
P.O. Box 340308
Hartford, CT 06134-0308
E-Mail: NL-Editor@csce.org
Phone: (860) 509-7333
Fax: (860) 509-7359

Director I

Christopher M. Holden, P.E.
162 Apple Tree Lane
Portland, CT 06480
E-Mail: Director-I@csce.org
Office: (860) 343-8085 Ext. 155
Fax: (860) 343-8091
Cell: (860) 883-4028

Director II

James L. Silva, P.E.
Silva Engineering, LLC
Windham Mills Technology
Center
322 Main Street, Bldg. 2
2nd Floor East
Willimantic, CT 06226
E-Mail: Director-II@csce.org
Phone: (860) 423-4506
Fax: (860) 423-1875

ASCE National Contact

ASCE Region 1 Society

Director

Anthony M. Puntin, P.E.
The Louis Berger Group
1001 Elm St., Suite 300
Manchester, NH 03101
Phone: (603) 644-5200 Ext. 362
(Office)
Fax: (603) 644-5220
Cell: (603) 496-1784
apuntin@louisberger.com

FAIRFIELD BRANCH

President

Ron Hill
15 East Ridge Road
Ridgefield, CT 06877
203-788-8021 Cell
203-431-0442 Home
president.fairfield@csce.org

TECHNICAL GROUP CHAIRS

Construction

William J. Cunningham, P.E.
Siefert Associates, LLC
180 Church St., Suite 6
Naugatuck, CT 06770
203-723-5830 Office
203-723-9346 Fax
860-582-7893 Home
gugsbilly@aol.com

Geotechnical

Gary J. Fuerstenberg, P.E.
GEI Consultants
455 Winding Brook Drive
Glastonbury, CT 06033
860-368-5300 Office
860-368-5307 Fax
gfuerstenberg@GEIconsultants.com

Structures

Mark J. Rodriguez
61 Pine Street
Naugatuck, CT 06770
203-597-7497 Office
markrodriguez78@gmail.com

COMMITTEE CHAIRS

Programs

Jeff Benoit, P.E.
CT Dept. of Transportation
40 Taft Pond Road
Pomfret Center, CT 06259
860-974-2572 Home
860-933-8772 Cell
jeffbenoit@earthlink.net

Membership

Jason F. Waterbury, P.E.
The Metropolitan District
555 Main Street, P.O. Box 800
Hartford, CT 06142-0800
860-278-7850 Ext. 3380 Office
860-525-5013 Fax
Vicepresident@csce.org

Career Guidance

Christopher M. Holden, P.E.
162 Apple Tree Lane
Portland, CT 06480
E-Mail: Director-I@csce.org
Office: (860) 343-8085 Ext. 155
Fax: (860) 343-8091
Cell: (860) 883-4028

Legislative Affairs

Roy Merritt, P.E.
HW Lochner, Inc.
424 Chapel St.
New Haven, CT 06511
203-752-1830 Office
203-752-1937 Fax
860-670-7540 Cell
rmerritt@hwlochner.com

Water Resources

Thomas A. Loto, P.E., BCEE
Malcolm Pirnie, Inc.
100 Roscommon Dr., Suite 100
Middletown, CT 06457
860-613-7407 Office
860-632-0036 Fax
860-830-1418 Cell
tloto@pirnie.com

Continuing Education

Jason F. Waterbury, P.E.
The Metropolitan District
555 Main Street, P.O. Box 800
Hartford, CT 06142-0800
E-Mail: Vicepresident@csce.org
860-278-7850 Ext. 3380 Office
860-525-5013 Fax

Government Engineers

Rabih M. Barakat, P.E.
CT Dept. of Transportation
2800 Berlin Turnpike
Newington, CT 06131-7546
860-594-3389 Office
860-594-3373 Fax
203-397-2996 Home
President-Elect@csce.org

Web Site

Christopher M. Holden, P.E.
162 Apple Tree Lane
Portland, CT 06480
E-Mail: Director-I@csce.org
Office: (860) 343-8085 Ext. 155
Fax: (860) 343-8091
Cell: (860) 883-4028

History & Heritage

Randall T. States, P.E.
GeoDesign, Inc.
984 Southford Road
Middlebury, CT 06762
203-758-8836 Ext. 111 Office
203-758-8842 Fax
203-530-5423 Cell
rtstates@geodesign.net

Scholarship Fund

Jim Sime, P.E.
CT Dept. of Transportation
280 West Street
Rocky Hill, CT 06067
860-258-0309 Office / 860-569-4186 Home
860-258-0399 Fax
james.sime@skiltons.org

Younger Members

Sara A. Ramsbottom, P.E.
CT Department of Public Health
410 Capitol Avenue
MS# 51 WAT
P.O. Box 340308
Hartford, CT 06134-0308
860-509-7333 Office
sara.ramsbottom@ct.gov or
nl-editor@csce.org

FACULTY ADVISORS

Central Connecticut State University

Clifford Anderson, Ph.D., D.WRE

Assistant Professor
Department of Engineering
Copernicus Hall Room 21207
1615 Stanley Street
New Britain, CT 06050-1040
860-832-1849 Office
andersoncle@ccsu.edu

University of Connecticut Richard Christenson, Ph.D.

Assistant Professor
Department of Civil and Environmental Engineering
University of Connecticut
261 Glenbrook Rd., UNIT-2037
Storrs, CT 06269
860-486-2270 Office
860-486-2298 Fax
rchrste@engr.uconn.edu

United States Coast Guard Academy

Hudson Jackson, Ph.D., P.E.
Engineering Department
15 Mohegan Avenue
New London, CT 06320-8103
860-444-8315 Office
860-444-8546 Fax
Hudson.V.Jackson@uscga.edu

Three Rivers Community Technical College

Diba Khan-Bureau
Professor & Program Coordinator
Environmental & Civil Engineering Technology Programs
574 New London Turnpike
Norwich, CT 06360
860-885-2383 Office
860-886-4960 Fax
dkhan-bureau@trcc.commnet.edu

University of New Haven Jean Nocito-Gobel, Ph.D.

Department of Civil & Environmental Engineering
300 Boston Post Road
West Haven, CT 06516
203-932-7155 Office
203-932-7158 Fax
jnocito-gobel@newhaven.edu

University of Hartford David Pines, Ph.D.

Chair and Associate Professor
Department of Civil, Environmental & Biomedical Engineering
200 Bloomfield Avenue
West Hartford, CT 06117
860-768-4560 Office
860-768-5073 Fax
pines@hartford.edu

2009-2010 CSCE NEWSLETTER ADVERTISING RATES

<u>Options</u>	<u>Prices</u>
A. Business Card (reduced to approx. 1 1/2" X 2 5/8")	\$400 min 6 issues
B. One-Quarter Page	\$750 min 6 issues
C. One half 8-1/2 x 11 in. Advertisement	\$325 per issue
D. One full 8-1/2 x 11 in. Advertisement	\$550 per issue
E. Employment Classified Ad: In-State Position	\$15 / line / issue
F. Employment Classified Ad: Out-of-State Position	\$20 / line / issue

Employment Classified Ads of five (5) lines or less (subject to editing) for in-state positions are published free of charge as a professional courtesy to our membership. We anticipate publishing at least eight issues per year. There are approximately 1600 subscribers to the CSCE Newsletter.

If you are interested in placing an ad, send an email to Amy Petrone at admin@csce.org.