

# ***Connecticut Society of Civil Engineers***

**www.csce.org**

Section of the American Society of Civil Engineers

## **125th Anniversary of CSCE**

**March 2010 Newsletter**

*In this issue:*

**Wednesday, March 24, 2010 – See details inside**

**President's Message**

*Liquid Assets* airing Sunday, March 28<sup>th</sup> on CPTV @ 1pm



**2010 ACE Award applications due March 31<sup>st</sup>**

**Benjamin Wright Award nominations due March 31<sup>st</sup>**

**Employment Opportunities**

## March 2010 Dinner Meeting

- Date:** Wednesday, March 24, 2010      **Location:** The Graduate Club, 115 Elm Street, New Haven, CT
- Sponsor:** Construction Technical Group & University of New Haven Student Chapter
- Topics:** UNH Student Chapter activities  
 Update on the I-95 New Haven Harbor Crossing Corridor Improvement Program  
 This Program is one of the largest transportation improvement initiatives ever undertaken by the Connecticut Department of Transportation (ConnDOT). The Program includes operational, safety, and capacity improvements to 7.2 miles of I-95, construction of a new signature, ten-lane bridge, and transit enhancements including a new Shore Line East commuter rail station at State Street in New Haven. Program limits extend from Sargent/Long Wharf Drive (Interchange 46) in New Haven to Cedar Street (Interchange 54) in Branford. The Program was initiated in 2000 with the groundbreaking ceremony for the new State Street Commuter Rail Station. Highway improvements are scheduled for completion in 2016.
- We are also hoping to incorporate an afternoon tour prior to the dinner meeting. Details will be posted on the website when they become available. There is a separate sign-up for the tour.
- Speakers:** Brian Mercure, Assistant District Engineer, ConnDOT District 3A  
 Anthony A. Moretti, Vice President & Area Manager, Parsons Brinkerhoff
- Cost:** \$35 CSCE members      \$45 Non-members      \$15 Full-Time Students  
 Unemployed Members: Free  
*Please pay at the door with cash or check payable to CSCE*
- Time:** 5:30 – 6:30 pm Social hour; 6:30 – 7:30 pm Dinner; 7:30 pm Program
- Dinner:** Choice of: Prime Rib; Tuscan Chicken with Dijon, garlic herb, lemon, and white wine marinade; Asian Salmon with roasted ginger glaze; or Penne with artichoke, sundried tomato, and vegetables in light marinara sauce
- Reservations:** Please contact Amy Petrone by email at [admin@csce.org](mailto:admin@csce.org) or by telephone at (860) 526-5935 by Monday, March 22, 2010. Please also note if you are interested in the possible tour.
- Directions:** **From Hartford:** I-91 South, Exit 3 (Trumbull St.). See Footnote below.  
**From New London:** I-95 South to New Haven – follow signs to I-91 North; once on I-91 N, take Exit 3 (Trumbull St.). See Footnote below.  
**From Stamford/New York area:** I-95 North to New Haven – follow signs to I-91 North; once on I-91 N, take Exit 3 (Trumbull St.). See Footnote below.  
**Footnote:** At end of Exit 3 count the traffic light you are facing as light #1. At 3<sup>rd</sup> light, turn left onto Temple St. At next light turn right onto Grove St. At next light turn left onto College St. At next light turn left onto Elm St. The Graduate Club is 150 feet down on your left.  
**Parking:** Evening parking is available in Yale Lot #51 after 4pm. The entrance is on Temple St. At end of Exit 3, count the traffic light you are faced with as #1, then proceed straight ahead on Trumbull Street a total of 3 traffic lights. At third traffic light, take a left onto Temple Street, go two blocks (past Grove and Wall Streets). First driveway on right past Wall Street.

## *President's Message*

These are exciting times to be a Civil Engineer in Connecticut and here at CSCE Central! The culmination of our 125<sup>th</sup> Anniversary Celebration, led by past Presidents Mario Riconzi and Randy States, is the sponsorship for the airing of the 1-½ hour documentary “Liquid Assets” on Connecticut Public Television. The program highlights the importance of protecting our investment in the infrastructure that brings us clean water – and will air on CPTV on Sunday, March 28<sup>th</sup> at 1:00 P.M. Please pass the word among interested friends and enjoy the show. In the process of negotiating the sponsorship, Mario and Randy convinced them to throw in numerous Radio and TV spots for CSCE highlighting the value Civil Engineers provide for society. You may have heard the 15-second ads on Public Radio (many people have commented to me how well the “message” comes through) – and soon you will see the TV spots on CPTV. Sylvester Stallone plays Mario Riconzi and Brad Pitt plays Randy States in the upcoming ads (just kidding – but the positive public relations from these radio and TV spots are real). While Civil Engineers rightfully don’t seek the media spotlight, reminding the Public of all the good work that we do can’t hurt. By the way, sponsorships are still available to help offset the costs to CSCE if companies are interested.

Following quickly on the heels of the Liquid Assets program, CSCE will gather on May 11<sup>th</sup> at the Aqua Turf for our 3<sup>rd</sup> Annual ACE Awards. We strongly encourage everyone to submit their worthy projects for consideration for an Award – and the **deadline is March 31<sup>st</sup>**. See this newsletter or our website for more information – and get those projects in!

Lastly, I attended a career fair for graduating Civil Engineers at the University of Connecticut on March 2<sup>nd</sup> – sponsored by the ASCE Student Chapter. I met many outstanding soon-to-be graduates eager to enter the working world. Economic times are currently difficult but a common message was to persevere and keep their chins-up: Civil Engineers play a vital role in the health and prosperity of humankind all over the globe – and they will soon find their place in their esteemed chosen Profession. Check out the Civil Engineering Department website at UConn if you are interested in any of these young CE candidates ([www.engr.uconn.edu/cee/asce](http://www.engr.uconn.edu/cee/asce)).

Respectfully Submitted,

Ronald J. Nault, P.E., M. ASCE

---

## **Want to be more involved in CSCE? Calling all volunteers!**

CSCE is a volunteer organization that can only be as strong as its members. There are several opportunities to get involved, from a position on the executive board to the technical groups and committees. We especially need volunteers for the Fairfield County branch. A full listing of all groups and committees can be found at the end of this newsletter. Contact any of the group or committee chairs or a member of the board for more information.

## *Upcoming CSCE Events*

### **March 2010**

Wednesday, March 24, 2010 – Monthly dinner meeting

Friday, March 26, 2010 – Hockey game outing – Hartford Wolf Pack vs. Adirondack Phantoms

Sunday, March 28, 2010 – Airing of *Liquid Assets* on CPTV @ 1 pm

See page 5 for more information

### **April 2010**

Spring 2010 ASCE Region 1 Assembly – See page 14 for more information

Tuesday, April 20, 2010 – Monthly dinner meeting @ United States Coast Guard Academy

### **May 2010**

Tuesday, May 11, 2010 – 3<sup>rd</sup> Annual ACE Awards @ Aqua Turf Club

See page 7 for more information and how to submit an application form (due March 31<sup>st</sup>).

### **July 2010**

Friday, July 23, 2010 – Annual Golf Tournament @ The Tradition, Wallingford, CT

## *ACSE National Conferences*

2010 Structures Congress – May 12-14, 2010, Orlando, FL

Visit [http://content.asce.org/conferences/Structures\\_2010/index.html](http://content.asce.org/conferences/Structures_2010/index.html) for more information.

2010 World Environmental and Water Resources Congress – May 16 – 20, 2010, Providence, RI

Visit <http://content.asce.org/conferences/ewri2010> for more information.

140<sup>th</sup> Annual Civil Engineering Conference – October 21-23, 2010, Las Vegas, NV

Visit <http://content.asce.org/conferences/annual2010/index.html> for more information.

1st T&DI Green Streets & Highways Conference – November 14-17, 2010, Denver, Colorado

Visit <http://content.asce.org/conferences/greenstreets-highways2010/index.html> for more information.

For a complete listing of all ASCE conferences, please visit: <http://asce.org/conferences>

## *Other Events*

2010 ASCE OPAL Gala – March 25, 2010, Washington, D.C. – see page 15 for more information

American Council of Engineering Companies 2010 Annual Convention and Legislative Summit

April 25-28, 2010, Washington, DC; Visit [www.acec.org](http://www.acec.org) for more information

If you have or know of an event that you would like to include in the newsletter, please send an email to [NL-editor@csce.org](mailto:NL-editor@csce.org).

THE STORY OF OUR WATER INFRASTRUCTURE

# Liquid Assets

Airing on CPTV March 28<sup>th</sup> @ 1 pm

As our primary 125<sup>th</sup> anniversary activity, CSCE will be sponsoring and coordinating an airing of the *Liquid Assets* documentary on CPTV on March 28<sup>th</sup> at 1 pm.

*Liquid Assets* is a public media and outreach initiative that seeks to inform the nation about the critical role that our water infrastructure plays in protecting public health and promoting economic prosperity.

A ninety-minute documentary, *Liquid Assets* explores the history, engineering, and political and economic challenges of our water infrastructure, and engages communities in local discussion about public water and wastewater issues. It tells the story of essential infrastructure systems: water, wastewater, and stormwater. These systems — some in the ground for more than 100 years — provide a critical public health function and are essential for economic development and growth. Largely out of sight and out of mind, these aging systems have not been maintained, and some estimates suggest this is the single largest public works endeavor in our nation's history.

Exploring the history, engineering challenges, and political and economic realities in urban and rural locations, the documentary provides an understanding of the hidden assets that support our way of life. Locations featured in the documentary include Atlanta, Boston, Herminie (Pennsylvania), Las Vegas, Los Angeles, Milwaukee, New York City, Philadelphia, Pittsburgh, and Washington, D.C.

**CSCE extends special thanks to our Supporting Sponsors in the airing of Liquid Assets:**

PLATINUM:



GOLD:



**CH2MHILL**

SILVER:

CARDINAL ENGINEERING ASSOCIATES, INC.

---

**CONSULTING CIVIL ENGINEERS**

**HALEY &  
ALDRICH**

**Tighe & Bond**

Consulting Engineers  
Environmental Specialists

**MALCOLM  
PIRNIE**

**Solutions for Life™**



CLIENTS | PEOPLE | PERFORMANCE



**Liquid Assets**  
liquidassets.psu.edu

# Achievement in Civil Engineering - ACE Awards

A message from your President:

As the President of the Connecticut Society of Civil Engineers, I invite you to participate in the Third Annual Achievement in Civil Engineering (ACE) Awards program. These Awards, which will be given out at our May 11th dinner event at the Aqua Turf in Plantsville, Connecticut, will commend projects on which significant engineering expertise or innovation were exhibited. The project categories include:

- Water Resources/Environmental
- Transportation
- Geotechnical
- Structural
- Construction

Please find information regarding the ACE Awards, how to apply, and sponsorship opportunities for the dinner event below. I look forward to your participation in this wonderful event where several outstanding projects...and the parties who made them possible...will be recognized.

Sincerely,  
Ronald J. Nault, P.E., M. ASCE  
President

**[Click on this link for the Application for the 2010 ACE Awards](#)**

**Applications are due March 31<sup>st</sup>.**

**[Click on this link for the 2010 Registration Sponsorship Form](#)**



**A listing of 2009 winners can be found on page 16**

## EMPLOYMENT OPPORTUNITIES

**Construction Engineer – Geotechnical and Structural Fields:** Siefert Associates, LLC, a Civil-Structural Engineering Firm involved in Bridge Design and the Construction Industry is seeking a self-motivated Civil Engineer with PE Certification and field experience to join it's team in Central CT. Projects are diverse and challenging in NY, CT, NJ, MA and RI. See website for more info: [www.siefertassociates.com](http://www.siefertassociates.com)

### **Project Engineers, Civil Engineers, Construction Inspectors**

Growing Civil Engineering firm in central Connecticut is seeking Project Engineers, Civil Engineers, and Construction Inspectors with broad experience in roadway, bridge, water/wastewater and stormwater projects. Excellent opportunity for professional growth and advancement. Cardinal Engineering has been serving municipalities and state agencies for 48 years. Cardinal offers an excellent benefit package and competitive salary. Interested candidates should send or email a cover letter and resume to Cardinal Engineering Associates, Inc. 3 Colony St., Meriden, Ct. 06451, Phone: 203-238-1969, Fax: 203-630-2056, Email: [jac3@cardinal-engineering.com](mailto:jac3@cardinal-engineering.com). Cardinal Engineering is an equal opportunity employer.

**Superintendent: Moretrench**, an employee owned company specializing in geotechnical construction, is recruiting for a Superintendent for our Assonet, MA office. Responsible for daily supervision of crew(s) in the execution of the work in accordance with the contract drawing and agreements or purchase order and project goals and schedules, provision of daily progress reports and payroll time sheets, ensuring that the work is performed safely and in accordance with OSHA regulations, conducting/assisting with site safety meetings, inspections and toolbox talks, maintaining adequate materials and equipment inventory on site to support production work, and maintaining positive client contact.

Must have 5+ years experience as a superintendent on geotechnical projects including drilling and tooling, testing of tiebacks, micropiles and earth retention systems. 100% travel throughout New England.

Comprehensive benefits package including profit sharing. For immediate consideration, please email your resume with salary history to: [resumes@mtac.com](mailto:resumes@mtac.com) or fax to: 973-627-4835. Include in the subject line: Superintendent, MA.

Moretrench is an Equal Opportunity Employer

**GHD: Project Manager & Regional Office Manager – Wastewater - Middletown, CT Office:** Both positions are responsible for wastewater treatment and infrastructure projects; assisting in business development, writing proposals, preparing agreements, budgeting and scheduling projects, leading and managing the project team and serving the client. Other responsibilities include assisting other regional offices on wastewater and infrastructure projects as needed. The Regional Office Manager position is also responsible for leading the office staff.

**Requirements for both positions:** Bachelor's degree in Civil or Environmental Engineering; 10 years related experience; Master's degree with 15 years experience preferred; PE License; Prior consulting experience working with municipal clients on wastewater treatment and infrastructure projects; Must be a team player; Strong interpersonal and communication skills; Some travel may be required.

We reward your commitment with an attractive salary and full roster of competitive benefits. If you'd like to be considered, please submit your résumé and salary requirements along with the office location you are applying for, in confidence, via [www.ghd.com/careers](http://www.ghd.com/careers).

**The Connecticut Department of Public Health (DPH)** has posted a continuous recruitment **Sanitary Engineer I** examination open to the public. In order to apply for a job with this title, an individual must have taken and passed this exam. Visit the Department of Administrative Services (DAS) website at [www.das.state.ct.us](http://www.das.state.ct.us) and click on "Jobs", then "State Employment Examinations" for information.

**Structural Engineer** needed for reinforced concrete building foundations and concrete high rise designs. Please send resume to [jrogers@pustola.com](mailto:jrogers@pustola.com).

## EMPLOYMENT OPPORTUNITIES, cont.

**Professional Civil Engineer:** CME Associates, Inc. is seeking a full-time Civil Engineer to work in our East Hartford office. The ideal candidate possesses a CT PE License with a minimum of 7 years experience in highway/transportation design and is familiar with CT DOT policies and procedures. Proficiency in Microstation is required while experience with In-Roads is considered a plus. Interested candidates should send a cover letter, resume, and three references to: CME Associates, Inc., Attn: Human Resources, PO Box 849, Woodstock, CT 06281. CME is an Equal Opportunity Employer.

# COLLINS

## ENGINEERS INC

### BRIDGE ENGINEER

Are you looking for new challenges? Collins Engineers, Inc. is looking for a Bridge Engineer to expand our office in Rocky Hill, CT. We offer a tremendous opportunity to be involved in a variety of large and small projects.

Qualified candidates must have a P.E. license and minimum of 8 years of bridge design experience, preferably with ConnDOT and/or MassDOT. Candidate must be motivated, capable of working independently, and organized with excellent written and oral communication skills.

*To be considered for this position, please send a resume to:*

Anne Harney, HR Director  
Collins Engineers, Inc.  
123 North Wacker Drive, Suite 300  
Chicago, IL 60606  
[aharney@collinsengr.com](mailto:aharney@collinsengr.com)  
Affirmative Action Employer m/f/d/v

[WWW.COLLINSENGR.COM](http://WWW.COLLINSENGR.COM)

See also ASCE Career Connections: <http://careers.asce.org/search.cfm>

## EASTERN TOPOGRAPHICS

Our extensive library includes over 150,000 **LOW ALTITUDE IMAGES**, allowing us to provide detailed, engineering level mapping year round.

We offer a **LOW PRICE GUARANTEE** with every project—visit our website [www.e-topo.com](http://www.e-topo.com) for details.

**FREE** downloads of low altitude aerial images of CT, MA, ME, NH, NY, NJ and RI are available **ONLINE**.



# Order of the Engineer



The purpose of the Order of the Engineer is to call attention to the Obligation of all engineers to use their technical education ethically in shaping the world around them. Ethical practice of engineering occasionally requires great courage, and always requires that we maintain the highest standards of personal integrity.

By definition, engineering is clearly a profession. Professionalism is more than this. Indeed, professionalism in its purest form, calls for a dedication which transcends monetary or other private considerations. It requires integrity – a dedication to the ethical standards of your profession. In the case of engineers, this concept translates into the Obligation to use our technical education ethically in shaping the world around us, and in these times, engineers are largely responsible for the products, processes and structures that shape our society.

If you are ready to accept this Obligation, and join the Order of the Engineer, please sign up for the ceremony. The Order of the Engineer Ceremony will be held during the March 24<sup>th</sup> Dinner Meeting. Please contact Jason Waterbury ([vicepresident@csce.org](mailto:vicepresident@csce.org)) or Amy Petrone ([admin@csce.org](mailto:admin@csce.org)) with any questions, or if you would like to sign up. The cost is \$15 for CSCE members and \$30 for non-members.

 <p>INDEPENDENT ENVIRONMENTAL ENGINEERS, SCIENTISTS AND CONSULTANTS</p> <p><a href="http://www.pirnie.com">www.pirnie.com</a></p>	<p>Thomas A. Loto, PE, BCEE Project Manager</p> <p>Malcolm Pirnie, Inc. 100 Roscommon Drive, Suite 100 Middletown, CT 06457</p> <p>T: 860.613.7407 C: 860.830.1418 F: 860.632.0036 <a href="mailto:tloto@pirnie.com">tloto@pirnie.com</a></p> 
--	---

<p>Architecture • Engineering • Environmental Land Surveying • Planning • Telecommunications Traffic &amp; Transportation • Construction Phase Services</p> 
<p>500 Enterprise Drive, Ste. 3B • Rocky Hill, Connecticut 06067 Tel: 860.529.8882 • Fax: 860.529.3991 <a href="http://www.urscorp.com">www.urscorp.com</a> AA/E/OE/M/F/V/D</p>

# 125th Anniversary of CSCE

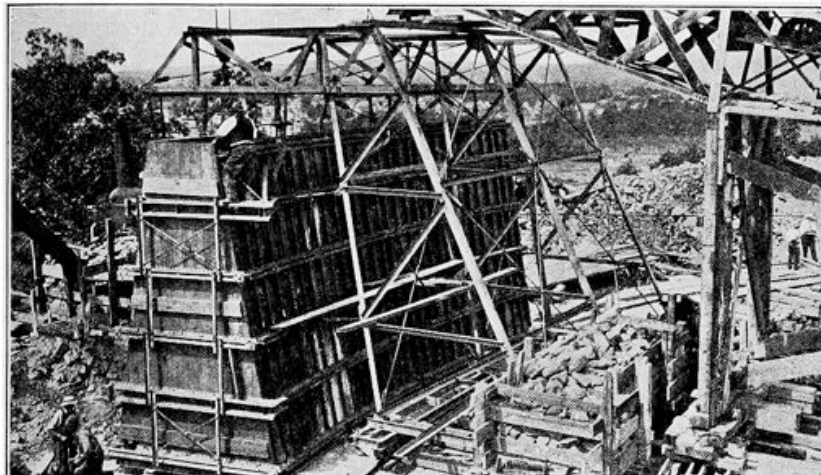
In this issue we will be highlighting a work of historical and notable civil engineering in Connecticut.

Name:	Mill Rock Reservoir
Location:	Blake Road, Hamden, CT
Function:	Distribution of Water Supply to the City of New Haven
Owner:	New Haven Water Company
Designed by:	Blair & Marchant, Inc.
Constructed by:	C. W. Blakeslee & Sons, Inc.
Year Completed:	1933
Current Status:	In use with modifications.
Further Information:	See CSCE History and Heritage Web Site for a copy of the paper presented to the society in 1933.

## Notable Features:

The Mill Rock Reservoir was designed and constructed as part of a 10-year upgrade by the New Haven Water Company to improve capacity, distribution, and efficiency of water delivery. Two circular tanks are joined forming a figure "8" plan with a permanent divider wall. Each unit was constructed for 3½-million gallon capacity.

6,500 cubic yards of earth and 12,000 cubic yards of rock were excavated. The excavated material was stockpiled on site, used to change the grade of Blake Road, and created space and material for an on-site concrete batch plant. Two 1-cubic yard capacity steam-powered mixers were used to make 14,500 cubic yards of high early strength concrete. Moveable steel formwork was used for placing and forming concrete. A 35-foot by 25-foot brick gatehouse operates gates, valves, and screens. The stockpiled fill was placed to form a surrounding embankment.



## You can help the History and Heritage Committee

The committee seeks brief descriptions of notable civil engineering works throughout Connecticut. Notable works are structures that benefit Connecticut's health, economy, well-being, and infrastructure. This could be a substantial listing since so many of our works provide substantial benefit.

The committee will publish descriptions in our newsletter as space permits. We propose publishing these descriptions on CSCE's web page also, possibly with hot links on a map.

Please suggest civil engineering works & submit the information below.


Name:	Location:
Function:	Owner:
Designed by:	Constructed by:
Year Completed:	Current Status:
Further Information:	
Notable Features (Narrative)	

Thank you.

Randall T. States, P.E.  
CSCE History and Heritage Committee  
[rtstates@geodesign.net](mailto:rtstates@geodesign.net)

**SIEFERT ASSOCIATES, LLC**  
**CONSTRUCTION ENGINEERS**

VINCENT A. SIEFERT, P.E.



180 Church Street, Suite 6  
Naugatuck, CT 06770  
203-723-1477  
203-723-9346 fax  
e-mail: vsiefert@siaet.net

**H**ELLER AND **J**OHNSEN

---

Consulting Geotechnical Engineers

---

Investigations • Design • Field Services

Foot of Broad Street T: (203)380-8188  
Stratford, CT 06615 F: (203)380-8198

WHITLOCK DALRYMPLE POSTON & ASSOCIATES, P.C.  
CONSULTING ENGINEERS

**Service areas include:**

Structural Engineering	Corrosion Assessment
Nondestructive Testing	Repair and Rehabilitation Design
Forensic Investigations	Litigation Support

**Keith Kesner, Ph.D., P.E.**  
Associate  
kkesner@wdpa.com




50 WASHINGTON STREET 203-354-4503 TEL Manassas, Virginia	SUITE 751 203-354-4528 FAX Austin, Texas	So. NORWALK, CT 06854 www.wdpa.com So. Norwalk, Connecticut
--	--	---

# ASCE extends condolences to Chile, urges donations

Although Chile's history of earthquakes means it was better prepared than most nations, the 8.8-magnitude temblor in the nation's center on Feb. 27 still has left widespread, massive devastation and death. ASCE extends our sympathies to the victims and is weighing options to render assistance. At the moment, ASCE encourages you to support relief efforts with a financial contribution to our longstanding partner, the American Red Cross. Go to the American Red Cross page on Chile to [make a donation](#).

Haiti is still in the throes of recovery from its devastating earthquake in January. A team from ASCE's Technical Council on Lifeline Earthquake Engineering arrived at the scene Feb. 28 to survey the damage, and will have a report on their findings in the coming weeks. You can make a donation to the American Red Cross designated specifically for Haiti relief -- [go to the Red Cross page](#).



**SOILTESTING, INC.**  
 140 Oxford Road  
 Oxford, CT 06478  
 203-888-4531  
 White Plains, NY • 914-946-4850  
**Since 1958**

---

**GEOTECHNICAL INVESTIGATIONS**

- Test Borings
- Rock Coring
- Monitor Wells


**PILES / ANCHORS**

- Helical Piles & Tiebacks
  - Micro Piles
- Tiedown Anchors

**UNDERPINNING**  
*Stop / Reverse Foundation Settlement*

- Resistance Piers –  
 35 to 50 kip Capacity
- Helical Piles

**www.soiltestinginc.net**  
**1-800-388-4473**



**GEODESIGN**  
 INCORPORATED

---

Geotechnical | Construction | Environmental  
 Engineers and Scientists

---

Subsurface Explorations  
 Deep Foundations  
 Geotechnical Special Inspections  
 Geotechnical Instrumentation  
 Demolition & Erection Plans  
 Sheeting/Shoring Design  
 Underpinning  
 Vibration Monitoring  
 Site Assessments  
 Remediation  
 Contaminated Soils Management  
 Permitting

---

984 Southford Rd.                      246 W. 38th St.  
 Middlebury, CT 06762                  New York, NY 10018  
 (203) 758-8836                          (212) 221-6651

**www.geodesign.net**



**HALEY & ALDRICH**

For over 50 years, providing services in:

- Geotechnical Engineering
- Site/Subsurface Characterization
- Environmental Regulatory Compliance
- Geothermal Energy
- Construction Monitoring

800 Connecticut Blvd.  
East Hartford CT 06108  
860.282.9400  
HaleyAldrich.com

## Region 1 News

What's going on in Region 1? Find out at <http://region1.asce.org>! New announcements have recently been added. Also check the site for events happening at other nearby ASCE sections and branches.

## Upcoming Region 1 Spring 2010 Assembly

A big part of the regional activities revolves around the Assemblies that are held twice a year – April and September. Each section/branch is encouraged to send participant(s). Typically, the April meeting has had a more “business” tone in a central location. The September meeting has been located throughout the Region and has typically included a tour/presentation. Feedback from participants has been very positive.

The upcoming Spring Assembly will be held in Albany, NY on April 17-18 at the Best Western – Albany Airport (<http://www.bwalbanyairport.com>). Rooms for \$89/night have been blocked for Friday and Saturday. Mark Rusnica and Tony DeFranco have graciously volunteered to help organize the event. The basic agenda is as follows. Additional details will be provided as the event approaches.

### Spring 2010 Assembly

Saturday, April 17, 2010	8:00am to 12:00pm	NE and NY Council
Saturday, April 17, 2010	1:00 pm to 6:00pm	Region 1 Assembly
Sunday, April 18, 2010	8:00 am to 11:00am	Region 1 Assembly
Sunday, April 18, 2010	11:30 am to 3:00pm	Board of Governors meeting

The September 2010 assembly will be held the weekend of September 18th or 25th in Ithaca, NY. Bill Merwarth and the Ithaca section are organizing of this event. More details will follow as the event approaches.



## Salute Civil Engineering at the 2010 OPAL Gala

**ASCE** | OUTSTANDING PROJECTS  
AND LEADERS GALA



The most glamorous night on the civil engineering calendar is coming March 25 to Washington, D.C. -- ASCE's OPAL Gala. Come to the nation's capital this spring to honor outstanding civil engineers and amazing infrastructure projects. Be on hand for the announcement of the world's Outstanding Civil Engineering Achievement for 2010 after learning what made each nominee worthy. Join in the ovations for several of civil engineering's greatest practitioners as they receive Outstanding Projects And Leaders awards and other ASCE honors. Find out about the [OPAL winners and OCEA nominees](#). Get your tuxedo or evening gown ready for a night of great tributes to civil engineering -- [register today](#).

## Benjamin Wright Award

The **Benjamin Wright Award** is CSCE's highest award, presented each year to a civil engineer practicing in Connecticut who has demonstrated outstanding practice his or her career, and made significant contributions to civil engineering. Please consider nominating a deserving colleague. **Nominations are due March 31, 2010.** The Executive Board will vote to determine the award winner and make the presentation at our annual ACE awards dinner in May. Candidates will be considered for several years following their nomination.

ASCE has many honors and awards to recognize deserving members. For a complete listing of all ASCE awards, please visit [www.asce.org/awards](http://www.asce.org/awards).



## 2009 ACE Award Winners

### **Water Resources/Environmental ACE Award**

Project: Sanitary & Storm Sewer Repairs, Middletown

Owner: Middletown Water & Sewer Department

Applicants: United International Corporation and DeRita Construction Company

### **Water Resources/Environmental Award of Merit**

Project: Biological Nutrient Removal, Hartford WPCF

Owner: The Metropolitan District Commission

Applicant: Malcolm Pirnie, Inc.

### **Transportation ACE Award**

Project: Truck Escape Ramp, Avon

Owner/Applicant: Connecticut Department of Transportation

### **Transportation Award of Merit**

Project: Route 34 Roundabout & Roadway Improvement Project, New Haven

Owner: Connecticut Department of Transportation

Applicant: Tighe & Bond, Inc.

### **Construction ACE Award**

Project: Middletown to Norwalk 345 kV Transmission Project, Bridgeport & Stratford

Owner: United Illuminating Company

Applicants: Black & Veatch Corporation and Luchs Consulting Engineers, LLC.

### **Geotechnical ACE Award**

Project: New Haven Harbor's Twin 48" Force Main Crossing, New Haven

Owner: Greater New Haven WPCA

Applicants: URS Corporation and GeoDesign, Inc.

### **Structural ACE Award**

Project: Beacon Hall Conversion at Housatonic Community College, Bridgeport

Owner: Connecticut Department of Public Works

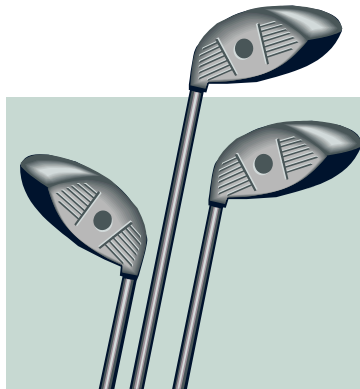
Applicant: GNCEB Engineers

In addition, Representative Joe Serra was recognized as CSCE's 2009 Legislator of the Year due to his long-standing service to the civil engineering industry in Connecticut, from his 37 years of service for the City of Middletown's Public Works Department, to his serving as the Secretary-Treasurer for the Connecticut Association of Street and Highway Officials (CASHO) for the past 30 years, to his advocacy on behalf of the industry while serving as State Representative for the 33<sup>rd</sup> District in Middletown – a position he has held for the past 17 years.

# Younger Member News

**SAVE THE DATE!!!**

## 2010 CSCE Golf Tournament



**Friday, July 23<sup>rd</sup>  
@ The Tradition, Wallingford**

---

**Are you a recent college grad, or about to be? Do you know someone who is, and think they'd be interested in joining ASCE?**

Did you know that ASCE offers pro-rated discounted membership dues for recent college graduates? From the year you graduated all the way through your 4<sup>th</sup> year after graduation you can get discounted dues. For more information visit <http://www.asce.org/membership>.

**Are you a “Younger Member”?**

A Younger Member is considered to be 35 years of age or younger. The Younger Member Committee fosters the professional growth, ethical awareness, and technical competence of the Section's younger members. The Committee meets once a month, and organizes several activities throughout the year, including for fun and community service. Check future issues of this newsletter for upcoming events. If you are interested in joining the committee or want more information, contact Sara Ramsbottom at [sara.ramsbottom@ct.gov](mailto:sara.ramsbottom@ct.gov).

The next meeting is Wednesday, April 6<sup>th</sup> @ 5:30 pm at Archie Moore's in Wallingford. Contact Sara Ramsbottom if you are a new member interested in attending so that you will be sure to get the meeting details.

***The Connecticut Society of Civil Engineers was formed in 1884. Separately, the Connecticut Section of the American Society of Civil Engineers (ASCE) was founded in 1919. The two organizations merged in 1981. We represent about 1,600 civil engineers statewide.***

## **2009 – 2010 CSCE Executive Board**

### *President*

**Ronald J. Nault, P.E.**  
Luchs Consulting Engineers  
DeCarlo & Doll  
Architects/Engineers  
87-89 Colony St.  
Meriden, CT 06451  
E-Mail: [President@csce.org](mailto:President@csce.org)  
Phone: (203) 379-0320  
Fax: (203) 379-0278

### *President-Elect*

**Rabih M. Barakat, P.E.**  
Connecticut Department of  
Transportation  
2800 Berlin Turnpike  
Newington, CT 06131-7546  
E-Mail: [President-Elect@csce.org](mailto:President-Elect@csce.org)  
Phone: (860) 594-3389  
Fax: (860) 594-3373  
Home: (203) 397-2996

### *Vice President*

**Jason F. Waterbury, P.E.**  
The Metropolitan District  
555 Main Street, P.O. Box 800  
Hartford, CT 06142-0800  
E-Mail: [Vicepresident@csce.org](mailto:Vicepresident@csce.org)  
860-278-7850 Ext. 3380 Office  
860-525-5013 Fax

### *Treasurer*

**Gregory K. Holness, P.E., Esq.**  
Permasteelisa North America  
Corp.  
123 Day Hill Road  
Windsor, CT 06095  
E-Mail: [Treasurer@csce.org](mailto:Treasurer@csce.org)  
Phone: (860) 298-2000  
Ext. 2484  
Fax: (860) 298-2009

### *Secretary*

**Robert Gomez, P.E.**  
VN Engineers, Inc.  
116 Washington Avenue  
North Haven, CT 06473  
203-234-7862 Office  
203-234-9154 Fax  
203-915-0893 Cell  
Email:  
[Secretary@csce.org](mailto:Secretary@csce.org)

### *Newsletter Editor*

**Sara A. Ramsbottom, P.E.**  
Connecticut Department of  
Public Health  
410 Capitol Avenue  
MS# 51 WAT  
P.O. Box 340308  
Hartford, CT 06134-0308  
E-Mail: [NL-Editor@csce.org](mailto:NL-Editor@csce.org)  
Phone: (860) 509-7333  
Fax: (860) 509-7359

### *Director I*

**Christopher M. Holden, P.E.**  
162 Apple Tree Lane  
Portland, CT 06480  
E-Mail: [Director-I@csce.org](mailto:Director-I@csce.org)  
Office: (860) 343-8085 Ext. 155  
Fax: (860) 343-8091  
Cell: (860) 883-4028

### *Director II*

**James L. Silva, P.E.**  
Silva Engineering, LLC  
Windham Mills Technology  
Center  
322 Main Street, Bldg. 2  
2nd Floor East  
Willimantic, CT 06226  
E-Mail: [Director-II@csce.org](mailto:Director-II@csce.org)  
Phone: (860) 423-4506  
Fax: (860) 423-1875

### *ASCE National Contact ASCE Region 1 Society Director*

**Anthony M. Puntin, P.E.**  
The Louis Berger Group  
1001 Elm St., Suite 300  
Manchester, NH 03101  
Phone: (603) 644-5200 Ext. 362  
(Office)  
Fax: (603) 644-5220  
Cell: (603) 496-1784  
[apuntin@louisberger.com](mailto:apuntin@louisberger.com)

## **FAIRFIELD BRANCH**

### *President*

**Ron Hill**  
15 East Ridge Road  
Ridgefield, CT 06877  
203-788-8021 Cell  
203-431-0442 Home  
[president.fairfield@csce.org](mailto:president.fairfield@csce.org)

## TECHNICAL GROUP CHAIRS

### Construction

#### William J. Cunningham, P.E.

Siefert Associates, LLC  
180 Church St., Suite 6  
Naugatuck, CT 06770  
203-723-5830 Office  
203-723-9346 Fax  
860-582-7893 Home  
[gugsbilly@aol.com](mailto:gugsbilly@aol.com)

### Geotechnical

#### Gary J. Fuerstenberg, P.E.

GEI Consultants  
455 Winding Brook Drive  
Glastonbury, CT 06033  
860-368-5300 Office  
860-368-5307 Fax  
[gfuerstenberg@GEIconsultants.com](mailto:gfuerstenberg@GEIconsultants.com)

### Structures

#### Mark J. Rodriguez

61 Pine Street  
Naugatuck, CT 06770  
203-597-7497 Office  
[markrodriguez78@gmail.com](mailto:markrodriguez78@gmail.com)

## COMMITTEE CHAIRS

### Programs

#### Jeff Benoit, P.E.

CT Dept. of Transportation  
40 Taft Pond Road  
Pomfret Center, CT 06259  
860-974-2572 Home  
860-933-8772 Cell  
[jeffbenoit@earthlink.net](mailto:jeffbenoit@earthlink.net)

### Membership

#### Jason F. Waterbury, P.E.

The Metropolitan District  
555 Main Street, P.O. Box 800  
Hartford, CT 06142-0800  
860-278-7850 Ext. 3380 Office  
860-525-5013 Fax  
[Vicepresident@csce.org](mailto:Vicepresident@csce.org)

### Career Guidance

#### Christopher M. Holden, P.E.

162 Apple Tree Lane  
Portland, CT 06480  
E-Mail: [Director-I@csce.org](mailto:Director-I@csce.org)  
Office: (860) 343-8085 Ext. 155  
Fax: (860) 343-8091  
Cell: (860) 883-4028

### Legislative Affairs

#### Roy Merritt, P.E.

HW Lochner, Inc.  
424 Chapel St.  
New Haven, CT 06511  
203-752-1830 Office  
203-752-1937 Fax  
860-670-7540 Cell  
[rmerritt@hwlochner.com](mailto:rmerritt@hwlochner.com)

### Water Resources

#### Thomas A. Loto, P.E., BCEE

Malcolm Pirnie, Inc.  
100 Roscommon Dr., Suite 100  
Middletown, CT 06457  
860-613-7407 Office  
860-632-0036 Fax  
860-830-1418 Cell  
[tloto@pirnie.com](mailto:tloto@pirnie.com)

### Continuing Education

#### Jason F. Waterbury, P.E.

The Metropolitan District  
555 Main Street, P.O. Box 800  
Hartford, CT 06142-0800  
E-Mail: [Vicepresident@csce.org](mailto:Vicepresident@csce.org)  
860-278-7850 Ext. 3380 Office  
860-525-5013 Fax

### Government Engineers

#### Rabih M. Barakat, P.E.

CT Dept. of Transportation  
2800 Berlin Turnpike  
Newington, CT 06131-7546  
860-594-3389 Office  
860-594-3373 Fax  
203-397-2996 Home  
[President-Elect@csce.org](mailto:President-Elect@csce.org)

### Web Site

#### Christopher M. Holden, P.E.

162 Apple Tree Lane  
Portland, CT 06480  
E-Mail: [Director-I@csce.org](mailto:Director-I@csce.org)  
Office: (860) 343-8085 Ext. 155  
Fax: (860) 343-8091  
Cell: (860) 883-4028

### History & Heritage

#### Randall T. States, P.E.

GeoDesign, Inc.  
984 Southford Road  
Middlebury, CT 06762  
203-758-8836 Ext. 111 Office  
203-758-8842 Fax  
203-530-5423 Cell  
[rtstates@geodesign.net](mailto:rtstates@geodesign.net)

### Scholarship Fund

#### Jim Sime, P.E.

CT Dept. of Transportation  
280 West Street  
Rocky Hill, CT 06067  
860-258-0309 Office / 860-569-4186 Home  
860-258-0399 Fax  
[james.sime@skiltons.org](mailto:james.sime@skiltons.org)

### Younger Members

#### Sara A. Ramsbottom, P.E.

CT Department of Public Health  
410 Capitol Avenue  
MS# 51 WAT  
P.O. Box 340308  
Hartford, CT 06134-0308  
860-509-7333 Office  
[sara.ramsbottom@ct.gov](mailto:sara.ramsbottom@ct.gov) or  
[nl-editor@csce.org](mailto:nl-editor@csce.org)

## FACULTY ADVISORS

### Central Connecticut State University

**Clifford Anderson, Ph.D., D.WRE**

Assistant Professor  
Department of Engineering  
Copernicus Hall Room 21207  
1615 Stanley Street  
New Britain, CT 06050-1040  
860-832-1849 Office  
[andersoncle@ccsu.edu](mailto:andersoncle@ccsu.edu)

### University of Connecticut

**Richard Christenson, Ph.D.**

Assistant Professor  
Department of Civil and Environmental Engineering  
University of Connecticut  
261 Glenbrook Rd., UNIT-2037  
Storrs, CT 06269  
860-486-2270 Office  
860-486-2298 Fax  
[rchrste@engr.uconn.edu](mailto:rchrste@engr.uconn.edu)

### United States Coast Guard Academy

**Hudson Jackson, Ph.D., P.E.**

Engineering Department  
15 Mohegan Avenue  
New London, CT 06320-8103  
860-444-8315 Office  
860-444-8546 Fax  
[Hudson.V.Jackson@uscga.edu](mailto:Hudson.V.Jackson@uscga.edu)

### Three Rivers Community Technical College

**Diba Khan-Bureau**

Professor & Program Coordinator  
Environmental & Civil Engineering Technology Programs  
574 New London Turnpike  
Norwich, CT 06360  
860-885-2383 Office  
860-886-4960 Fax  
[dkhan-bureau@trcc.commnet.edu](mailto:dkhan-bureau@trcc.commnet.edu)

### University of New Haven

**Jean Nocito-Gobel, Ph.D.**

Department of Civil & Environmental Engineering  
300 Boston Post Road  
West Haven, CT 06516  
203-932-7155 Office  
203-932-7158 Fax  
[jnocito-gobel@newhaven.edu](mailto:jnocito-gobel@newhaven.edu)

### University of Hartford

**David Pines, Ph.D.**

Chair and Associate Professor  
Department of Civil, Environmental & Biomedical Engineering  
200 Bloomfield Avenue  
West Hartford, CT 06117  
860-768-4560 Office  
860-768-5073 Fax  
[pines@hartford.edu](mailto:pines@hartford.edu)

## 2009-2010 CSCE NEWSLETTER ADVERTISING RATES

<u>Options</u>	<u>Prices</u>
A. Business Card (reduced to approx. 1 1/2" X 2 5/8")	\$400 min 6 issues
B. One-Quarter Page	\$750 min 6 issues
C. One half 8-1/2 x 11 in. Advertisement	\$325 per issue
D. One full 8-1/2 x 11 in. Advertisement	\$550 per issue
E. Employment Classified Ad: In-State Position	\$15 / line / issue
F. Employment Classified Ad: Out-of-State Position	\$20 / line / issue

Employment Classified Ads of five (5) lines or less (subject to editing) for in-state positions are published free of charge as a professional courtesy to our membership. We anticipate publishing at least eight issues per year. There are approximately 1600 subscribers to the CSCE Newsletter.

If you are interested in placing an ad, send an email to Amy Petrone at [admin@csce.org](mailto:admin@csce.org).